



4

STATISTICS AND REFERENCE

WISCONSIN STATE SYMBOLS

Over the years, the Wisconsin Legislature has officially recognized a wide variety of state symbols. In order of adoption, Wisconsin has designated an official seal, coat of arms, flag, song, flower, bird, tree, fish, state animal, wildlife animal, domestic animal, mineral, rock, symbol of peace, insect, soil, fossil, dog, beverage, grain, dance, ballad, waltz, fruit, tartan, pastry, dairy product, and herb. These symbols provide a focus for expanding public awareness of Wisconsin's history and diversity. They are listed and described in Section 1.10 of the Wisconsin Statutes.

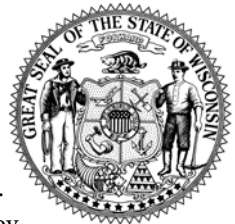
.....



COAT OF ARMS The large shield at the center of the coat of arms is divided into quarters on which appear symbols for agriculture (plow), mining (pick and shovel), manufacturing (arm and hammer), and navigation (anchor). At the center of the large shield, a small shield and the band that encircles it represent the United States coat of arms and symbolize Wisconsin's membership in and loyalty to the United States. Supporting the large shield from the

sides are a sailor holding a coil of rope and a yeoman resting on a pick. These figures represent labor on water and land. At the base of the large shield, a horn of plenty represents prosperity and abundance, and a pyramid of 13 lead ingots represents mineral wealth and the 13 original states of the United States. Above the large shield appears a badger, the state animal, and above the badger appears the state motto, "Forward."

GREAT SEAL The great seal consists of the state coat of arms; the words "Great Seal of the State of Wisconsin" in a curve above; and a line of 13 stars, representing the 13 original states of the United States, in a curve below, all enclosed within an ornamental border. The great seal is used to authenticate the official acts of the gov-



ernor other than the governor's approval of laws.



FLAG The state flag consists of the state coat of arms; the word "Wisconsin" in white letters above; and the statehood date "1848" in white numbers below, all centered on a royal blue field.

SONG “On, Wisconsin,” music by William T. Purdy, words by Joseph S. Hubbard and Charles D. Rosa.

On, Wisconsin! On, Wisconsin! Grand old badger state! We, thy loyal sons and daughters, Hail thee, good and great. ■ On, Wisconsin! On, Wisconsin! Champion of the right, “Forward”, our motto—God will give thee might!

BALLAD “Oh Wisconsin, Land of My Dreams,” words by Erma Barrett, music by Shari A. Sarazin.

Oh Wisconsin, land of beauty, with your hillsides and your plains, with your jack-pine and your birch tree, and your oak of mighty frame. ■ Land of rivers, lakes and valleys, land of warmth and winter snows, land of birds and beasts and humanity, oh Wisconsin, I love you so. ■ Oh Wisconsin, land of my dreams. Oh Wisconsin, you’re all I’ll ever need. A little heaven here on earth could you be? Oh Wisconsin, land of my dreams. ■ In the summer, golden grain fields; in the winter, drift of white snow; in the springtime, robins singing; in the autumn, flaming colors show. ■ Oh I wonder who could wander, or who could want to drift for long, away from all your beauty, all your sunshine, all your sweet song? ■ Oh Wisconsin, land of my dreams. Oh Wisconsin, you’re all I’ll ever need. A little heaven here on earth could you be? Oh Wisconsin, land of my dreams. ■ And when it’s time, let my spirit run free in Wisconsin, land of my dreams.

WALTZ “The Wisconsin Waltz,” words and music by Eddie Hansen.

Music from heaven throughout the years; the beautiful Wisconsin Waltz. Favorite song of the pioneers; the beautiful Wisconsin Waltz. ■ Song of my heart on that last final day, when it is time to lay me away. One thing I ask is to let them play the beautiful Wisconsin Waltz. ■ My sweetheart, my complete heart, it’s for you when we dance together; the beautiful Wisconsin Waltz. I remember that September, before love turned into an ember, we danced to the Wisconsin Waltz. ■ Summer ended, we intended that our lives then would both be blended, but somehow our planning got lost. ■ Memory now sings a dream song, a faded love theme song; the beautiful Wisconsin Waltz.



TARTAN The thread count of the state tartan is 44 threads muted blue; 6 threads scarlet; 4 threads muted blue; 6 threads gray; 28 threads black; 40 threads dark green; 4 threads dark yellow; 40 threads dark green; 28 threads black; 22 threads muted blue; and 12 threads dark brown (half sett with full count at the pivots).

FLOWER

Wood violet (*Viola papilionacea*)



BIRD Robin (*Turdus migratorius*)



TREE

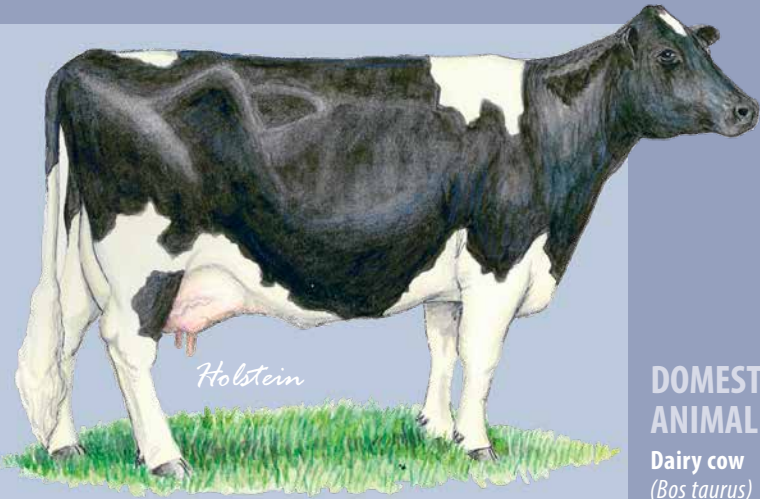
Sugar maple
(*Acer saccharum*)



FISH Muskellunge
(*Esox masquinongy masquinongy* Mitchell)

ANIMAL Badger (*Taxidea taxus*)





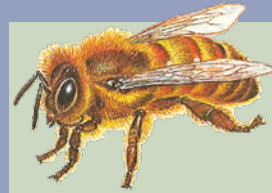
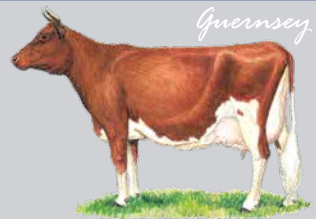
DOMESTIC ANIMAL

Dairy cow
(*Bos taurus*)



WILDLIFE ANIMAL

White-tailed deer (*Odocoileus virginianus*)



INSECT Honey bee (*Apis mellifera*)

DOG American water spaniel





SYMBOL OF PEACE

Mourning dove
(Zenaidura macroura carolinensis Linnaeus)

BEVERAGE Milk



SOIL Antigo silt loam
(Typic glossoboralf)



ROCK Red granite

MINERAL Galena (*lead sulfate*)



GRAIN Corn (*Zea mays*)

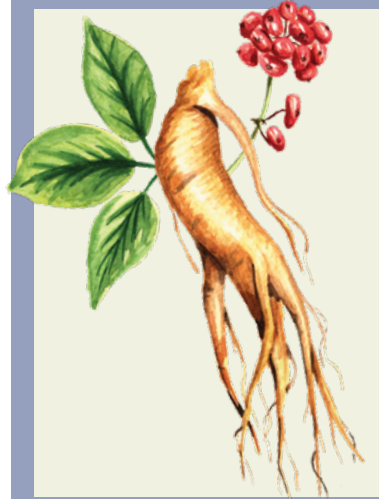


FRUIT Cranberry
(*Vaccinium macrocarpon*)

FOSSIL Trilobite (*Calymene celebra*)



PASTRY Kringle



HERB Ginseng (*Panax quinquefolius*)



DANCE Polka



DAIRY PRODUCT
Cheese