

HIGHLIGHTS OF HISTORY IN WISCONSIN

History — On May 29, 1848, Wisconsin became the 30th state in the Union, but the state's written history dates back more than 300 years to the time when the French first encountered the diverse Native Americans who lived here. In 1634, the French explorer Jean Nicolet landed at Green Bay, reportedly becoming the first European to visit Wisconsin. The French ceded the area to Great Britain in 1763, and it became part of the United States in 1783. First organized under the Northwest Ordinance, the area was part of various territories until creation of the Wisconsin Territory in 1836.

Since statehood, Wisconsin has been a wheat farming area, a lumbering frontier, and a preeminent dairy state. Tourism has grown in importance, and industry has concentrated in the eastern and southeastern part of the state.

Politically, the state has enjoyed a reputation for honest, efficient government. It is known as the birthplace of the Republican Party and the home of Robert M. La Follette, Sr., founder of the progressive movement.

Political Balance — After being primarily a one-party state for most of its existence, with the Republican and Progressive Parties dominating during portions of the state's first century, Wisconsin has become a politically competitive state in recent decades. The Republicans gained majority control in both houses in the 1995 Legislature, an advantage they last held during the 1969 session. Since then, control of the senate has changed several times. In 2009, the Democrats gained control of both houses for the first time since 1993; both houses returned to Republican control in 2011.

Scott Walker's victory in the 2010 gubernatorial race placed the governor's office in Republican hands after the 8-year tenure of Democrat Jim Doyle. Since 1958, a year that marked an end to GOP dominance in state politics, the Republicans have won the governor's office 9 times, and the Democrats 8 times. In the last 50 years, Wisconsin's two main urban areas – Milwaukee and Madison – have provided over half of the state's constitutional officers. During this period, 11 women have served as constitutional officers: three as lieutenant governor, one as attorney general, two as secretary of state, three as state treasurer, and two as superintendent of public instruction.

National Office — Although the Democratic candidate has carried Wisconsin six times in a row, presidential elections in the state tend to be close. In fact, in 2008 Barack Obama became the first candidate to win a majority (56%) of the presidential vote since 1988. This has resulted in Wisconsin being regarded as a hotly contested "swing state" in many recent presidential elections.

Wisconsin voters tend to retain their U.S. Senators in office for long periods of time. Since 1900, seven senators have served three terms or more, topped by Senator William Proxmire's 32 years in office. Democrats have usually held both of Wisconsin's U.S. Senate seats over the past 50 years, but currently each party holds one seat.

Currently, five Republicans and three Democrats represent Wisconsin in the U.S. House of Representatives, and two of the current members have been elected 15 or more times in regular elections but no other member has served more than eight terms. Democrats held the majority of seats from 1973 to 1991. The Republicans held the majority from 1991 to 1997, but lost it to the Democrats again in 1997. The Congressional delegation was evenly divided from 2003 to 2007. Democrats regained the majority in 2007, but Republicans won it back in the 2010 election. Certain congressional districts have traditionally been represented by one party or the other with little relationship to statewide politics.

Voter Turnout — Turnout in presidential and gubernatorial elections may vary as much as a half million votes from election to election. Although individual elections have been up and down, the trend has been upward. Nearly 3 million votes were cast in the each of the last two presidential elections.

Supreme Court — Although justices of the Wisconsin Supreme Court are elected officials, they sometimes are first named to the court by gubernatorial appointment to fill a vacancy. Subsequently, the appointees must be elected to the office if they wish to stay on the court; most have been successful. Among the current seven justices, two came to the court by the appointment route. The first woman justice to serve the court, Shirley S. Abrahamson, was appointed in 1976. She was elected in 1979 and became chief justice in 1996.

SIGNIFICANT EVENTS IN WISCONSIN HISTORY

Under the Flag of France

Although American Indians lived in the area of present-day Wisconsin for several thousand years before the arrival of the French – numbering about 20,000 when the French arrived – the written history of the state began with the accounts of French explorers. The French explored the area, named places and established trading posts, but left relatively little mark on it. They were interested in the fur trade, rather than agricultural settlement, and were never present in large numbers.

- 1634 — Jean Nicolet: First known European to reach Wisconsin. Sought Northwest Passage.
- 1654-59 — Pierre Esprit Radisson and Medart Chouart des Groseilliers: First of the fur traders in Wisconsin.
- 1661 — Father Rene Menard: First missionary to Wisconsin Indians.
- 1665 — Father Claude Allouez founded mission at La Pointe.
- 1666 — Nicholas Perrot opened fur trade with Wisconsin Indians.
- 1672 — Father Allouez and Father Louis Andre built St. Francois Xavier mission at De Pere.
- 1673 — Louis Jolliet and Father Jacques Marquette discovered Mississippi River.
- 1678 — Daniel Greysolon Sieur du Lhut (Duluth) explored western end of Lake Superior.
- 1685 — Perrot made Commandant of the West.
- 1690 — Perrot discovered lead mines in Wisconsin and Iowa.
- 1701-38 — Fox Indian Wars.
- 1755 — Wisconsin Indians, under Charles Langlade, helped defeat British General Braddock.
- 1763 — Treaty of Paris. Wisconsin became part of British colonial territory.

Under the Flag of England

Wisconsin experienced few changes under British control. It remained the western edge of European penetration into the American continent, important only because of the fur trade. French traders plied their trade and British and colonial traders began to appear, but Europeans continued to be visitors rather than settlers.

- 1761 — Fort at Green Bay accepted by English.
- 1763 — Conspiracy of Pontiac. Two Englishmen killed by Indians at Muscoda.
- 1764 — Charles Langlade settled at Green Bay. First permanent settlement.
- 1766 — Jonathan Carver visited Wisconsin seeking Northwest Passage.
- 1774 — Quebec Act made Wisconsin a part of Province of Quebec.
- 1781 — Traditional date of settlement at Prairie du Chien.
- 1783 — Second Treaty of Paris. Wisconsin became United States territory.

Achieving Territorial Status

In spite of the Treaty of Paris, Wisconsin remained British in all but title until after the War of 1812. In 1815, the American army established control. Gradually, Indian title to the southeastern half of the state was extinguished. Lead mining brought the first heavy influx of settlers and ended the dominance of the fur trade in the economy of the area. The lead mining period ran from about 1824 to 1861. Almost half of the 11,683 people who lived in the territory in 1836 were residents of the lead mining district in the southwestern corner of the state.

- 1787 — Under the Northwest Ordinance of 1787, Wisconsin was made part of the Northwest Territory. The governing units for the Wisconsin area prior to statehood were:
 - 1787-1800 — Northwest Territory.
 - 1800-1809 — Indiana Territory.
 - 1809-1818 — Illinois Territory.
 - 1818-1836 — Michigan Territory.
 - 1836-1848 — Wisconsin Territory.
- 1795 — Jacques Vieau established trading posts at Kewaunee, Manitowoc, and Sheboygan. Made headquarters at Milwaukee.
- 1804 — William Henry Harrison's treaty with Indians at St. Louis. United States extinguished Indian title to lead region (a cause of Black Hawk War).
- 1814 — Fort Shelby built at Prairie du Chien. Captured by English and name changed to Fort McKay.
- 1815 — War with England concluded. Fort McKay abandoned by British.
- 1816 — Fort Shelby rebuilt at Prairie du

- Chien (renamed Fort Crawford). Astor's American Fur Company began operations in Wisconsin.
- 1818 — Solomon Juneau bought trading post of Jacques Vieau at Milwaukee.
- 1820 — Rev. Jedediah Morse preached first Protestant sermon in Wisconsin at Fort Howard (Green Bay) July 9. Henry Schoolcraft, James Duane Doty, Lewis Cass made exploration trip through Wisconsin.
- 1822 — New York Indians (Oneida, Stockbridge, Munsee, and Brothertown) moved to Wisconsin. First mining leases in southwest Wisconsin.
- 1825 — Indian Treaty established tribal boundaries.
- 1826-27 — Winnebago Indian War. Surrender of Chief Red Bird.
- 1828 — Fort Winnebago begun at Portage.
- 1832 — Black Hawk War.
- 1833 — Land treaty with Indians cleared southern Wisconsin land titles. First newspaper, *Green Bay Intelligencer*, established.
- 1834 — Land offices established at Green Bay and Mineral Point. First public road laid out.
- 1835 — First steamboat arrived at Milwaukee. First bank in Wisconsin opened at Green Bay.
- 1836 — Act creating Territory of Wisconsin signed April 20 by President Andrew Jackson. (Provisions of Ordinance of 1787 made part of the act.)

Wisconsin Territory

Wisconsin's population reached 305,000 by 1850. About half of the new immigrants were from New York and New England. The rest were principally from England, Scotland, Ireland, Germany, and Scandinavia. New York's Erie Canal gave Wisconsin a water outlet to the Atlantic Ocean and a route for new settlers. Wheat was the primary cash crop for most of the newcomers.

State politics revolved around factions headed by James Doty and Henry Dodge. As political parties developed, the Democrats proved dominant throughout the period.

1836 — Capital located at Belmont — Henry Dodge appointed governor, July 4, by President Andrew Jackson. First session of legislature. Madison chosen as permanent capital.

- 1837 — Madison surveyed and platted. First Capitol begun. Panic of 1837 — all territorial banks failed. Winnebago Indians ceded all claims to land in Wisconsin. Imprisonment for debt abolished.
- 1838 — Territorial legislature met in Madison. Milwaukee and Rock River Canal Company chartered.
- 1840 — First school taxes authorized and levied.
- 1841 — James D. Doty appointed governor by President John Tyler.
- 1842 — C.C. Arndt shot and killed in legislature by James R. Vineyard.



Indian gaming at Lac du Flambeau, c. 1911.
(State Historical Society, 23908)

- 1844 — Nathaniel P. Tallmadge appointed governor. Wisconsin Phalanx (a utopian colony) established at Ceresco (Ripon).
- 1845 — Dodge reappointed governor. Mormon settlement at Voree (Burlington). Swiss colony came to New Glarus.
- 1846 — Congress passed enabling act for admission of Wisconsin as state. First Constitutional Convention met in Madison.
- 1847 — Census population 210,546. First Constitution rejected by people. Second Constitutional Convention.
- 1848 — Second Constitution adopted. President James K. Polk signed bill on May 29 making Wisconsin a state.

Early Statehood

Heavy immigration continued after statehood. The state remained largely agricultural with wheat the primary crop. Slavery, banking laws, and temperance were the major issues of the period. Despite the number of foreign immigrants and a shift from Democratic control to Republican control, most political leaders continued to have ties to the northeast-

ern United States. New York state laws and institutions provided models for much of the activity of the early legislative sessions.

1848 — Legislature met June 5. Governor Nelson Dewey inaugurated June 7. State university incorporated. First telegram reached Milwaukee. Large scale German immigration began.

1849 — School code adopted. First free, tax-supported, graded school with high school at Kenosha.

1850 — Bond Law for controlling sale of liquor passed. State opened the Wisconsin Institute for Education of the Blind at Janesville.

1851 — First railroad train – Milwaukee to Waukesha. First state fair at Janesville.

1852 — School for deaf opened at Delavan. Prison construction begun at Waupun.

1853 — Impeachment of Judge Levi Hubbell. Capital punishment abolished (third state to take action).

1854 — Republican Party named at a meeting in Ripon. First class graduated at state university. Joshua Glover, fugitive slave, arrested in Racine, and the Wisconsin Supreme Court, in related matter, declared Fugitive Slave Law of 1850 unconstitutional. Milwaukee and Mississippi Railroad reached Madison.

1856 — Bashford-Barstow election scandal.

Legislative report on maladministration of school funds.

1857 — Railroad completed to Prairie du Chien. First high school class graduated at Racine. Industrial School for Boys opened at Waukesha.

1858 — Legislative investigation of bribery in 1856 Legislature.

1859 — Abraham Lincoln spoke at state fair in Milwaukee.

1861 — Beginning of Civil War. Governor called for volunteers for military service. Bank riot in Milwaukee. Office of county superintendent of schools created.

1862 — Governor Louis P. Harvey drowned. Draft riots. Edward G. Ryan's address at Democratic Convention criticized Lincoln's conduct of war.

1864 — Cheese factory started at Ladoga, Fond du Lac County, by Chester Hazen.

1865 — 96,000 Wisconsin soldiers served in Civil War; losses were 12,216.

The Maturing Commonwealth

After the Civil War Wisconsin matured into a modern political and economic entity. Heavy immigration continued throughout the period. The mix of immigrants remained similar to that prior to the Civil War until the end of the century, when Poles began to appear in large numbers.



President William Howard Taft at the Wisconsin State Fair, 1909. (State Historical Society, 30224)

The Republican Party remained in control of state government throughout the period, but was challenged by Grangers, Populists, Socialists, and Temperance candidates in addition to the Democratic Party and dissidents within the Republican Party. Temperance, the use of foreign languages in schools, railroad regulation, and currency reform were major issues in the state throughout the period.

Wheat culture gradually declined in importance in Wisconsin as more fertile wheatlands were opened to cultivation in the north and west. In the 1880s and 1890s, dairying gradually became the primary agricultural pursuit in the state. The agricultural school at the university developed into a national leader in the field of dairy science. From the 1870s through the 1890s, lumbering prospered in the northern half of the state. At its peak from 1888 to 1893, it accounted for one-fourth of all wages paid in the state. By the end of the period, Milwaukee and the southeastern half of the state had developed a thriving heavy machinery industry. The paper industry was established in the Fox River Valley by the end of the century. The tanning and the brewing industries were also prominent.

- 1866 — First state normal school opened at Platteville. Agricultural College at university reorganized under Morrill Act.
- 1871 — Peshtigo fire burned over much of 6 counties in northeast Wisconsin, resulting in over 1,000 deaths.
- 1872 — Wisconsin Dairymen's Association organized at Watertown.
- 1873 — Invention of typewriter by C. Latham Sholes. The Patrons of Husbandry, an agricultural organization nicknamed the Grangers, elected Governor William R. Taylor.
- 1874 — Potter Law limiting railroad rates passed.
- 1875 — Free high school law passed; women eligible for election to school boards. State Industrial School for Girls established at Milwaukee. Republicans defeated Grangers. Oshkosh almost destroyed by fire.
- 1876 — Potter Law repealed. Hazel Green cyclone.
- 1877 — John T. Appleby patented knotter for twine binders.
- 1882 — Constitution amended to make legislative sessions biennial. First hydroelectric plant established at Appleton.

1883 — Major hotel fire at the Newhall House in Milwaukee killed 71. South wing of Capitol extension collapsed; 7 killed. Agricultural Experiment Station established at university.

- 1885 — Gogebic iron range discoveries made Ashland a major shipping port.
- 1886 — Strikes related to the 8-hour work day movement at Milwaukee culminate in confrontation with militia at Bay View; 5 killed. Agricultural Short Course established at university.
- 1887 — Marshfield almost destroyed by fire.
- 1889 — Bennett Law, requiring classroom instruction in English, passed. Wisconsin Supreme Court in the "Edgerton Bible case", prohibited reading and prayers from the King James Bible in public schools. Arbor Day authorized. Former Governor Jeremiah Rusk became first U.S. Secretary of Agriculture.
- 1890 — Stephen M. Babcock invented quick, easy, accurate test for milk butterfat content.
- 1891 — Bennett Law repealed after bitter opposition from German Protestants and Catholics.
- 1893 — Wisconsin Supreme Court ordered state treasurer to refund to the state interest on state deposits, which had customarily been retained by treasurers.
- 1894 — Forest fires in northern and central Wisconsin.
- 1897 — Corrupt practice act passed.
- 1898 — Wisconsin sent 5,469 men to fight in Spanish-American War; losses were 134.
- 1899 — Antipass law prohibited railroads from giving public officials free rides. Tax commission created. New Richmond tornado.

The Progressive Era

The state's prominent role in the reform movements which swept the country at the beginning of the century gave Wisconsin national fame and its first presidential candidate. Republicans dominated the state legislature, but Progressive and Stalwart factions fought continually for control of the party. Milwaukee consistently returned a strong Socialist contingent to the legislature.

Large-scale European immigration ended during this period, but ethnic groups retained strong individual identities and remained a

significant force in the politics and culture of the state. Important social issues were reflected in the calendar of progressive legislation enacted during the period. The 2 world wars caused great stress because of the large German population of the state.

Heavy machinery manufacturing, paper products and dairying consolidated their position as the leading economic activities. As the last virgin forests in the northern half of the state were cut over, lumbering faded in importance. Brewing temporarily disappeared with the advent of Prohibition.



Loading logs near Mosinee, 1914. (State Historical Society, 10113)

- 1900 — Wisconsin's first state park, Interstate near St. Croix Falls, established.
- 1901 — First Wisconsin-born Governor, Robert M. La Follette, inaugurated. Teaching of agriculture introduced into rural schools. Legislative Reference Library, which served as a model for other states and the Library of Congress, established — later renamed the Legislative Reference Bureau.
- 1904 — Primary election law approved by referendum vote. State Capitol burned.
- 1905 — State civil service established; auto license law passed; tuberculosis sanatoria authorized. Forestry Board created. Railroad Commission, regulating railroads and subsequently utilities, created.
- 1907 — Current Capitol begun.
- 1908 — Income tax amendment adopted.
- 1910 — Milwaukee elected Emil Seidel first Socialist mayor. Eau Claire first Wisconsin city to adopt commission form

of government.

- 1911 — First income tax law; teachers' pension act; vocational schools authorized; Industrial and Highway Commissions created; workmen's compensation act enacted.
- 1913 — Direct election of Wisconsin's U.S. senators approved.
- 1915 — Conservation Commission, State Board of Agriculture, and State Board of Education created.
- 1917 — Capitol completed, cost \$7,258,763. 120,000 Wisconsin soldiers served in World War I; losses were 3,932. Wisconsin first state to meet draft requirements; 584,559 registrations.
- 1919 — Eighteenth Amendment (Prohibition) ratified.
- 1920 — Nineteenth Amendment (women's suffrage) ratified; first state to deliver ratification to Washington.
- 1921 — Equal rights for women and prohibition laws enacted.
- 1923 — Military training made optional at university.
- 1924 — La Follette won Wisconsin's vote for president as Progressive Party candidate. Reforestation amendment to state constitution adopted.
- 1925 — Senator La Follette died on June 18.
- 1929 — Professor Harry Steenbock of University of Wisconsin patented radiation of Vitamin D. Legislature repealed all Wisconsin laws for state enforcement of Prohibition.
- 1932 — Forest Products Laboratory erected at Madison.
- 1933 — Dairy farmers undertook milk strike to protest low prices. Wisconsin voted for repeal of 18th Amendment (Prohibition) to U.S. Constitution.
- 1934 — Wisconsin Progressive Party formed.
- 1942 — Governor-elect Loomis died; Supreme Court decided Lieutenant Governor Goodland to serve as acting governor.
- 1941-45 — Wisconsin enrolled 375,000 for World War II; casualties 7,980.
- 1946 — Wisconsin Progressive Party dissolved and rejoined Republican Party.

The Middle Years of the Twentieth Century

After the demise of the Progressives, the Democratic Party began a gradual resurgence and, by the late 1950s, became strongly com-

petitive for the first time in over a century. With the decline in foreign immigration, the traditional ethnic differences became muted, but significant numbers of blacks appeared in the urban areas of the state for the first time. Discrimination in housing and employment became matters of concern. Other important issues included the growth in the size of state government, radicalism on the university campuses, welfare programs and environmental questions. Tourism emerged as a major industry during this period.

1948 — Centennial Year.

1949 — Legislature enacted new formula for distribution of state educational aids and classified school districts for this purpose.

1950 — Wisconsin enrolled 132,000 for the Korean Conflict; 800 casualties.

1951 — First major legislative reapportionment since 1892.

1957 — Legislation prohibited lobbyists from giving anything of value to a state employee.

1958 — Professor Joshua Lederberg, UW geneticist, Nobel prize winner in medicine.

1959 — Gaylord Nelson, first Democratic governor since 1933, inaugurated. Circus World Museum established at Baraboo. Frank Lloyd Wright, architect, died.

1960 — Mrs. Dena Smith elected state treasurer, first woman elected to statewide office in Wisconsin.

1961 — Legislation enacted to initiate long-range program of acquisition and improvement of state recreation facilities (ORAP program). Federal supervision of Menominee Indian tribe terminated on April 29; reservation became 72nd county.

1962 — Selective sales tax and income tax withholding enacted. Kohler Company strike, which began in 1954, settled.

1963 — John Gronouski, state tax commissioner, appointed U.S. Postmaster General. State expenditures from all funds for 1963-64 fiscal year top \$1 billion for first time.

1964 — Wisconsin Supreme Court redistricted legislature after legislature and governor failed to agree on a plan. Two National Farmers Organization members killed in demonstration at Bonduel stockyard. Legislature enacted property tax relief for aged. The office of county superintendent of schools abolished, but Cooperative

Educational Service Agencies (CESAs) created to provide regional services.

1965 — School compulsory attendance age raised to 18. All parts of state placed into vocational school districts. County boards reapportioned on population basis. State law prevented discrimination in housing. The State Capitol, in use since 1917, officially dedicated, after extensive remodeling and cleaning.

1966 — 1965 Legislature held first full even-year regular session since 1882. Governor Warren P. Knowles called out National Guard to keep order during civil rights demonstrations in Wauwatosa. Wisconsin Supreme Court upheld Milwaukee Braves baseball team move to Atlanta. Grand jury investigation of illegal lobbying activities in the legislature resulted in 13 indictments.

1967 — Executive branch reorganized along functional lines. Ban on colored oleomargarine repealed. Racial rioting in Milwaukee in July-August. Marathon marches demonstrate for Milwaukee open housing ordinance. Antiwar protests at the University of Wisconsin in Madison culminate in riot with injuries.

1968 — Constitutional amendment permitted the legislature to meet as provided by law rather than once a biennium, resulting in annual sessions. Ninety black students expelled from Wisconsin State University-Oshkosh when December demonstration damaged the administration building. Wisconsin's first heart transplant performed at St. Luke's Hospital in Milwaukee; first successful bone marrow transplant performed by team of scientists and surgeons at the University of Wisconsin in Madison.

1969 — Selective sales tax became general sales tax. On opening day of special legislative session on welfare and urban aids, welfare mothers and UW-Madison students, led by Father James Groppi, took over the Assembly Chamber; National Guard called to protect Capitol. Groppi cited for contempt and jailed; contempt charge upheld by Wisconsin Supreme Court. Student strikes at UW in Madison demanded Black studies department; National Guard activated to restore order. Congressman Melvin R. Laird appointed U.S. Secretary of Defense. Wisconsin's portion of Interstate Highway System completed.

- 1970 — Army Mathematics Research Building at the UW in Madison bombed by antiwar protestors, resulting in one death. “Old Main” at Wisconsin State University-Whitewater burned down in apparent arson. First elections to 4-year terms in Wisconsin history for all constitutional officers, based on constitutional amendment ratified in 1967. UW scientists, headed by Dr. Har Gobind Khorana, succeeded in the first total synthesis of a gene.
- 1971 — The legislature, now meeting in regular session throughout the biennium, enacted major shared tax redistribution, merger of University of Wisconsin and State University systems, revision of municipal employee relations laws.
- 1972 — Legislature enacted comprehensive consumer protection act, lowered the age of majority from 21 to 18, required environmental impact statement for all legislation affecting the environment, repealed railroad full crew law, and ratified the unsuccessful “equal rights” amendment to U.S. Constitution. Record highway death toll, 1,168.
- 1973 — State constitutional amendment permitting bingo adopted. Barbara Thompson first woman to hold the elective office of State Superintendent of Public Instruction. The 1954 Menominee Termination Act repealed by Congress. Legislature enacted state ethics code, repealed oleomargarine tax, funded programs for the education of all handicapped children, and established procedures for informal probate of simple estates.
- 1974 — Legislature enacted comprehensive campaign finance act and strengthened open meetings law. Democrats swept all constitutional offices and gained control of both houses of the 1975 Legislature for first time since 1893. Kathryn Morrison first woman elected to the state senate. Striking teachers fired in Hortonville.
- 1964-1975 — 165,400 Wisconsinites served in Vietnam; 1,239 were killed.

The Late Twentieth Century

Democrats lost control of the senate in 1993 for the first time since 1974, and in 1995 they lost control of the assembly for the first time since 1970. Control of the senate has changed several times since then. Women began to be

widely represented in the legislature for the first time in the 90s.

Health care reform, restructuring welfare, the business climate in the state, taxation, education, and prisons were the chief concerns of policymakers in the 90s.

California challenged Wisconsin’s dominance of the dairy industry. After an economic downturn in the 80s, the 90s saw a robust economy throughout most of the state with Madison leading the entire country in employment for several months. The farm sector and brewing industry continued to experience difficulties, however.

Litigation and demonstrations over off-reservation resource rights of the Chippewa Indians continued throughout the 80s to be replaced by controversy over Indian gaming in the 90s and into the new century.

1975 — Menominee Indians occupied Alexian Brothers Novitiate. Legislature made voter registration easier, established property tax levy limits on local governments, and eliminated statutory distinctions based on sex. UW-Madison scientist, Dr. Howard Temin, shared 1975 Nobel Prize in physiology-medicine.

1976 — U.S. District Court ordered integration of Milwaukee public schools. Ice storm damage reached \$50.4 million. Wisconsin Legislature established a system for compensating crime victims. Exxon discovered sulfide zinc and copper deposits in Forest County. Shirley S. Abrahamson was appointed first woman on the Wisconsin Supreme Court. Wisconsin Supreme Court declared negative school aids law unconstitutional.

1977 — Governor Patrick J. Lucey appointed Ambassador to Mexico, and Lieutenant Governor Martin Schreiber became “acting governor”. First state employees union strike lasted 15 days; National Guard ran prisons. Constitutional amendments authorized raffle games and revised the structure of the court system by creating a Court of Appeals. Legislation enacted included public support of elections campaigns, no-fault divorce, and implied consent law for drunk driving.

1978 — Wisconsin Supreme Court allowed cameras in state courtrooms. Vel Phillips elected secretary of state, first black constitutional officer. Laws enacted included a hazardous waste management program.

1979 — Constitutional amendment removed lieutenant governor from serving as president of the senate. Moratorium on tax collections gave state taxpayers a 3-month “vacation” from taxes. Shirley S. Abrahamson, became the first woman elected to Wisconsin Supreme Court after serving by appointment for 3 years. Legislature established school of veterinary medicine at the UW-Madison.

1980 — Eric Heiden of Madison won five Olympic gold medals for ice speed skating, named winner of the Sullivan Award as best amateur athlete in the country. 15,000 Cuban refugees housed for the summer at Fort McCoy. Former Governor Lucey ran as independent candidate for U.S. Vice President. State revenue shortfall led to 4.4 percent cuts in state spending. Laws enacted included specific rights for victims and witnesses of crimes, and mental patient commitment revisions.

1981 — U.S. Supreme Court ruled against Wisconsin’s historic open primary. Laws enacted included stronger penalties for drunk driving and changes in mining taxes.

1982 — State unemployment hit highest levels since the Great Depression. Voters endorsed first statewide referendum in nation calling for a freeze on nuclear weapons. Laws enacted included extensions in the fair employment law, an “employees’ right-to-know” law pertaining to toxic substances in the workplace, a new public records law, and a historic preservation law. Jos. Schlitz Brewing Co. acquired by Stroh Brewing Co. of Detroit, all Milwaukee operations closed.

1983 — Continued recession forced adoption of budget including a 10 percent tax surcharge and a pay freeze for state employees. Law raising minimum drinking age to 19 passed (effective 7/1/85). In one-day uprising, inmates at Waupun State Prison took 15 hostages, but released them uninjured. Laws enacted included a “lemon law” on motor vehicle warranties, changes in child support collection procedures and levels. UW-Madison School of Veterinary Medicine enrolled its first class.

1984 — Most powerful U.S. tornado of 1984 destroyed Barneveld; 9 dead. Democratic



Main Street, Oregon, 1912. (State Historical Society, 38978)

party chose presidential convention delegates in caucuses rather than by presidential preference primary as a result of the Democratic National Committee rules changes. Indian treaty rights to fish and hunt caused controversy. First liver transplants in Wisconsin conducted at UW Hospital. Laws enacted included a marital property reform act, groundwater protection act, establishment of high school graduation requirements, a “right-to-die” act, prohibition of smoking in public areas. Economic conditions began to improve from the low-point of the previous 2 years.



John S. Donald (center), Secretary of State from 1913-1917, poses with election ballots, accompanied by E.J. Walden (left) and L.B. Nagler. (State Historical Society, 46764)

- 1985 — Milwaukee air crash killed 31. Major consolidation of state banks by large holding companies. Laws enacted included authorization for public utilities to form holding companies, comparable worth, and teen pregnancy prevention measures. First state tax amnesty program.
- 1986 — Farm land values dropped across the state. Exxon dropped plans to develop copper mine near Crandon. Laws enacted allowed regional banking, set sulfur dioxide emission limits, raised the drinking age to 21, and limited damages payable in malpractice actions.
- 1987 — Voters approved constitutional amendments allowing pari-mutuel betting and a state lottery. Laws enacted included a mandatory seatbelt law, antitakeover legislation, gradual end to the inheritance and gift taxes, and a “learnfare” program designed to keep in school the children of families receiving Aid to Families With Dependent Children (AFDC). G. Heileman Brewing Company taken over by Alan Bond.
- 1988 — Driest summer since the 1930s. The first state lottery games began. Chrysler Corporation’s automobile assembly plant in Kenosha, the nation’s oldest car plant, closed. Laws enacted included mandatory family leave for employees.
- 1989 — Laws enacted included creation of Department of Corrections, the Lower Wisconsin State Riverway, and a statewide land stewardship program.
- 1990 — More than 1,400 Wisconsin National Guard and Reserve soldiers were called to active duty in Persian Gulf crisis, 11 casualties. The number of Milwaukee murders set a new record, raising demands for crime and drug controls. Laws enacted included a major recycling law and Milwaukee Parental Choice voucher program for public and nonsectarian private schools.
- 1991 — The price of raw milk hit lowest point since 1978. First Indian gambling compacts signed. Governor Tommy G. Thompson vetoed a record 457 items in the state budget.
- 1992 — Train derailment caused major spill of toxic chemicals and evacuation of over 22,000 people in Superior. Thousands of opponents, including children, staged protests at 6 abortion clinics in Milwaukee throughout the summer. Laws enacted included parental consent for abortion, health care reform, and creation of a 3-member Gaming Commission.
- 1993 — Wisconsin Congressman Les Aspin and UW-Madison President Donna Shalala named President Bill Clinton’s Secretary of Defense and Secretary of Health and Human Services, respectively. Thousands in Milwaukee became ill as a result of cryptosporidium in the water supply. California passed Wisconsin in milk production. Republicans won control of state senate for the first time since 1974. Laws enacted included a 1999 sunset for traditional welfare programs, a cap on school spending, and permission to organize limited liability companies.
- 1994 — Laws enacted included removal of about \$1 billion in public school operating taxes from property tax by 1997, a new regulatory framework for Public Service Commission regulation of telecommunication utilities, and granting

- towns most of the same powers exercised by cities and villages.
- 1995 — Republicans won control of state assembly for the first time since 1970. Elk reintroduced in northern Wisconsin. July heat wave contributed to 172 deaths.
- 1996 — Governor Thompson's new welfare reform plan, known as Wisconsin Works (W-2), received national attention. Train derailment forced evacuation of Weyauwega. Pabst Brewing closed 152-year-old brewery in Milwaukee. Senator George Petak was removed from office in the first successful legislative recall election in state history.
- 1997 — Groundbreaking for controversial new Miller Park, future home of the Milwaukee Brewers baseball team.
- 1998 — Tammy Baldwin became first Wisconsin woman elected to the U.S. Congress. U.S. Supreme Court upheld constitutionality of extension of Milwaukee Parental Choice school vouchers to religious schools. Second state tax amnesty program. Laws enacted included a mining moratorium, new penalties for failure to pay child support, truth-in-sentencing, and protection of fetuses.
- 1999 — Governor Tommy Thompson began record fourth term. Laws enacted included "smart growth", graduated drivers licensing, a sales tax rebate. Supermax, the state's high security prison, opened at Boscobel. Record low unemployment.
- 2000 — Legislature approved a local sales tax and revenue bonds for renovation of Lambeau Field, home of the Green Bay Packers.
- Recent Years**
- 2001 — Governor Thompson ended a record 14 years in office and assumed post of U.S. Secretary of Health and Human Services. Lt. Governor Scott McCallum became governor and appointed State Senator Margaret Farrow as the first woman to serve as lieutenant governor. Chronic Wasting Disease discovered in the state's deer herd. Extensive Mississippi River flooding. Miller Park opened. Laws enacted included telemarketing "no call" list, wetland protection, and the "senior care" prescription drug assistance plan.
- 2002 — Barbara Lawton became the first woman elected lieutenant governor and Peggy A. Lautenschlager became first woman elected attorney general. Deadliest single traffic accident in state history killed 10 and injured 40 near Sheboygan. Investigation into legislative caucus staffs resulted in criminal charges against five legislators. Seven Milwaukee County board members recalled over pension scandal.
- 2003 — Jim Doyle became first Democratic governor in 16 years. The Crandon mine issue was apparently resolved when local Indian tribes purchased the ore deposits. The renovated Lambeau Field opened. Senator Gary George became the second legislator in Wisconsin history to be recalled. A number of Wisconsin Guard and Reserve units were activated for service in the Iraq war. Wisconsin held its first mourning dove hunt.
- 2004 — Louis Butler, Jr., became the first black member of the Wisconsin Supreme Court. State government began to reduce its automobile fleet after allegations of misuse. Significant legislation included a livestock facility siting law and revision to clean air and water laws intended to spur job creation. Voter turnout in the fall election was 73%, the highest in many years.
- 2005 — The state minimum wage was increased. Wisconsin experienced a record 62 tornadoes during the year, including a record 27 in one day — August 18, when tornadoes hit Viola, Stoughton, and other communities resulting in one death, 27 injuries, and \$40 million in damage. Several current and former members of the legislature were convicted of illegal campaign activities.
- 2006 — Continued participation in the Iraq War by Wisconsin National Guard and Reserve units was a potent issue, as was immigration reform. The legislature limited the use of condemnation power for the benefit of private individuals. Voters approved a constitutional amendment limiting marriage to persons of the opposite gender in November. An advisory referendum in favor of the death penalty was also approved by the voters.
- 2007 — Ethics laws and elections regulation procedures were modified. Milwaukee-based Miller Brewing merged with Denver's Coors brewery. The state budget did not pass until late October, one of the latest budgets in state history.
- 2008 — Louis Butler became the first

sitting Supreme Court justice to be defeated at the polls in 40 years, losing to Michael Gableman. Severe flooding hit southern Wisconsin in June. Failure of an embankment caused Lake Delton to drain, destroying three homes. The Great Lakes Compact received state and federal approval, regulating the use of Great Lakes water outside their watershed. A sharp downturn in the economy caused a rise in unemployment and the closing of the General Motors plant in Janesville, ending a chapter in Wisconsin's 100-year involvement in auto assembly.

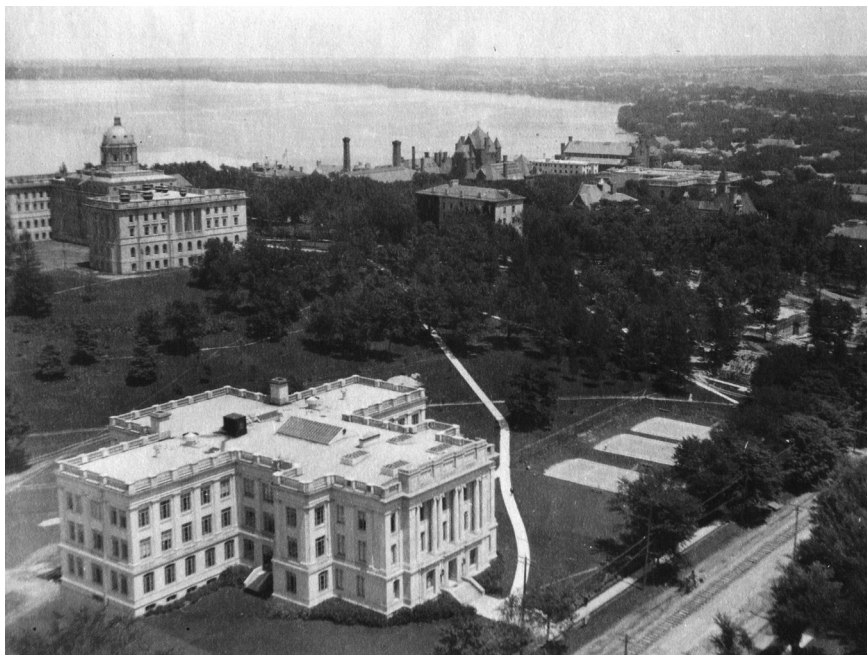
2009 — Democrats opened the 99th Legislature with control of the governor's office and both houses of the legislature for the first time since the 1985 session. The ongoing economic crisis resulted in a projected budget deficit of \$6 billion for the next biennium. In the largest activation since the Berlin Crisis of 1961, 3,000 soldiers of the Wisconsin National Guard

prepared for mobilization to Iraq. A severe influenza outbreak resulted in 47 deaths.

2010 — A number of powerful tornadoes hit southern Wisconsin on June 21. Among the areas sustaining severe damage was the Old World Wisconsin historic site. The Republican Party swept the November elections, capturing the governor's office and both houses of the legislature. It was the first time in over 70 years that partisan control of all three switched in the same election. Governor-Elect Walker declined to accept \$810 million in federal funds to build a high speed rail line between Madison and Milwaukee.

2011 — Governor Walker's proposal to curtail collective bargaining benefits for public workers led 14 Democrats to leave the state in order to deny the senate a quorum. Thousands of protesters surrounded the Capitol to oppose the legislation, which was delayed for weeks.

Sources: State Historical Society, *The Thirtieth Star, 1948*; *The 1958 Compton Yearbook* and succeeding editions; *The Americana Annual – 1967*; Robert C. Nesbit, *Wisconsin, A History*; Wisconsin Legislative Reference Bureau, *Clippings: Wisconsin History*.



The University of Wisconsin campus, 1909. (State Historical Society, 60860)

FAMOUS CITIZENS OF WISCONSIN

- Edward P. Allis** (1824-1889), industrialist — developed the steel rolling mill.
- Don Ameche*** (1908-1993), actor — began career in radio, appeared in 56 movies; won Academy Award for *Cocoon*.
- Roy Chapman Andrews*** (1884-1960), explorer — found first dinosaur egg in the Gobi Desert.
- Les Aspin*** (1938-1995), political leader — President Clinton's first secretary of defense, January 1993 – December 1993; served 22 years in the U.S. Congress.
- Stephen M. Babcock** (1843-1931), chemist — devised butterfat content test.
- John Bardeen*** (1908-1991), physicist — twice winner of the Nobel Prize for development of the transistor and for the theory of superconductivity.
- John Bascom** (1827-1911), educator — president, University of Wisconsin 1874-1887; leader in upgrading the university to a nationally recognized institution.
- Aaron Bohrod** (1907-1992), painter — twice winner of the Guggenheim Fellowship; artist-in-residence at the University of Wisconsin-Madison.
- Richard Ira “Dick” Bong*** (1920-1945), aviator — leading World War II pilot; shot down 40 enemy planes to become America's “all time ace”; awarded Congressional Medal of Honor.
- Olympia Brown** (1835-1926), minister and publisher — first ordained woman minister in U.S.; key figure in women's rights movement.
- Jerome I. Case** (1819-1891), manufacturer — leader in mechanization of agriculture.
- Carrie Chapman Catt*** (1859-1947), suffragist — President of the National American Woman Suffrage Association, which she reorganized as the League of Women Voters with 2 million members after passage of the 19th amendment guaranteed women the vote.
- Bernard J. Cigrand*** (1866-1932), activist — leader in the movement to celebrate Flag Day.
- Laurel Blair Salton Clark*** (1961-2003), astronaut and naval flight surgeon — mission specialist died in crash of space shuttle Columbia.
- John R. Commons** (1862-1945), economist — drafted Wisconsin civil service law.
- Seymour Cray*** (1925-1996), computer scientist — called the “father of the supercomputer”.
- Leo T. Crowley** (1889-1972), banker — structured the Federal Deposit Insurance Corporation as its chairperson, 1934-1945.
- Patrick Cudahy** (1849-1919), businessman — founder of a leading meat-packing company.
- August Derleth*** (1909-1971), author — noted for many contributions to literature about Wisconsin.
- Ole Evinrude** (1877-1934), inventor — developed the first outboard motor designed for mass production.
- Edna Ferber** (1885-1968), author — received 1925 Pulitzer Prize for the novel, *So Big*.
- Lynn Fontanne** (1887-1983) and **Alfred Lunt***, acting couple — appeared in theater, motion pictures, and television; jointly awarded Presidential Medal of Freedom in 1964.
- Zona Gale*** (1874-1938), author — recipient of 1921 Pulitzer Prize in drama for the play, *Miss Lulu Bett*.
- Hamlin Garland*** (1860-1940), author — received 1922 Pulitzer Prize for the novel, *A Daughter of the Middle Border*.
- Ezekiel Gillespie** (1818-1892), activist — plaintiff in 1866 Wisconsin Supreme Court case which resulted in extension of suffrage to Wisconsin Blacks; one of the founders of the first African Methodist Episcopal church in Wisconsin.
- William T. Green** (1863-1911), activist — first Black attorney in Wisconsin; active in securing the 1895 passage of the first civil rights law in the state.
- Owen J. Gromme*** (1896-1991), painter — wildlife artist, author of *Birds of Wisconsin*, and painter of the 1945 federal duck stamp.
- John A. Gronouski*** (1919-1996), political leader — postmaster general under Presidents Kennedy and Johnson; one of the architects of the modern Democratic Party in Wisconsin.

- Mildred Fish Harnack*** (1902-1943), war hero — while instructor at the University of Berlin, organized resistance group and transmitted intelligence to Allies; executed by Nazis.
- Cordelia Harvey** (1824-1895), humanitarian — instrumental in establishing military hospitals in the North during the Civil War.
- Woodrow Charles “Woody” Herman** (1913-1987), musician — jazz clarinetist and one of the outstanding “big band” leaders.
- William Dempster Hoard** (1836-1918), farmer and governor — introduced the French version of the silo and the subearth vault for curing cheese.
- Harry Houdini** (1874-1926), magician — world-renowned escape artist.
- J. Willard Hurst** (1911-1997), legal scholar — University of Wisconsin-Madison professor of law; nationally recognized expert in legal history.
- Samuel C. Johnson** (1833-1919), industrialist — founded wax products firm.
- George F. Kennan*** (1904-2005), diplomat, scholar and statesman — architect of Cold War “containment policy”.
- Walter J. Kohler, Sr.*** (1875-1940), industrialist and governor — founded plumbing equipment company.
- Julius Frank Anthony “Pee Wee King” Kuczynski*** (1914-2000), musician — member of the Country Music Hall of Fame; author of over 400 songs including “Tennessee Waltz”, one of the state songs of the State of Tennessee.
- Belle Case La Follette*** (1859-1931), lawyer and editor — first woman to graduate from the University of Wisconsin Law School; leader in support of the rights of women and African Americans.
- Robert M. La Follette, Sr.*** (1855-1925), political leader — progressive reformer as governor and U.S. Senator.
- Carl Laemmle** (1867-1939), business executive — major figure in the growth of the motion picture industry; built Universal City Studios.
- Earl L. “Curly” Lambeau** (1898-1965), professional football coach — founder and coach of the Green Bay Packers; instrumental in establishing the National Football League.
- Mary Lasker*** (1901-1994), philanthropist — her financial donations and influence supported vast expansion of cancer research; awarded Presidential Medal of Freedom in 1969.
- William D. Leahy*** (1875-1959), fleet admiral U.S. Navy — Chief of Naval Operations and President Roosevelt’s chief of staff during World War II; the only Wisconsinite to wear the 5 stars of fleet admiral.
- Aldo Leopold** (1887-1948), teacher and author — University of Wisconsin professor and prominent ecologist; wrote *Sand County Almanac*.
- Wladziu Valentino Liberace*** (1919-1986), musician — world famous pianist-singer; known for his showmanship.
- Vince Lombardi** (1913-1970), professional football coach — 1959-1968 coach of the Green Bay Packers, the first NFL team to win 3 consecutive championships.
- Alfred Lunt*** (1893-1977) and **Lynn Fontanne**, acting couple — appeared in theater, motion pictures, and television; jointly awarded Presidential Medal of Freedom in 1964.
- Douglas MacArthur** (1880-1964), general — served in World Wars I and II, noted for his Philippine campaign, led post-war occupation of Japan, commander of UN forces in Korea.
- Frederic March*** (1897-1975), actor — won Academy Awards for *Dr. Jekyll and Mr. Hyde* and *Best Years of Our Lives*.
- Helen Farnsworth Mears*** (1872-1916), sculptor — created the Frances Willard statue in Statuary Hall of the U.S. Capitol and “The Genius of Wisconsin” in the Wisconsin Capitol.
- Charles McCarthy** (1873-1921), government innovator — established and directed first legislative reference library in the nation (forerunner of the Legislative Reference Bureau); wrote *The Wisconsin Idea*; advocate of vocational schools.
- Golda Meir** (1898-1978), political leader — prime minister of Israel (1969-1974); was educated and taught school in Milwaukee.

- William “Billy” Mitchell** (1879-1936), brigadier general, U.S. Army — fervent advocate of a strong air force.
- John Muir** (1838-1914), naturalist — promoted the national parks system.
- Gaylord Nelson*** (1916-2005), state legislator, governor, and U.S. Senator — founder of Earth Day.
- Lorine Niedecker*** (1903-1970), poet — author of several books of poetry; featured in most anthologies of 20th century American poetry.
- Albert Ochsner*** (1858-1925), surgeon — pioneer in radium cancer treatment.
- Georgia O’Keeffe*** (1887-1986), artist — innovative painter of flowers and landscapes, awarded Presidential Medal of Freedom in 1977.
- Les Paul*** (1915-2009), musician — pioneered electric guitar design and multitrack recording.
- George C. Poage** (1880-1962), athlete — first Black athlete to compete in the modern Olympics; won bronze medals in the 200 and 400 meter hurdles in the 1904 Olympics at St. Louis.
- William Proxmire** (1915-2005), U.S. Senator — noted for his “Golden Fleece Award” condemning government waste.
- Mitchel Red Cloud, Jr.*** (1925-1950), Winnebago war hero — posthumously awarded Congressional Medal of Honor for service in Korea; first member of a Wisconsin tribe so honored.
- William H. Rehnquist*** (1924-2005), jurist — Chief Justice of the U.S. Supreme Court 1986-2005; Associate Justice 1972-1986.
- Albert Ringling** (1852-1916), circus promoter — merged Ringling Brothers Circus with Barnum and Bailey Circus to become the “Greatest Show On Earth”.
- Jeremiah Rusk** (1830-1893), soldier, governor, and congressman — brigadier general in Union army, first U.S. Secretary of Agriculture.
- Carl Schurz** (1829-1906), political activist — German immigrant to Wisconsin and national supporter of German-American interests; served as brigadier general in Union army, U.S. Secretary of the Interior, U.S. Senator from Missouri, ambassador to Spain, newspaper owner, and writer.
- Margaretha Meyer Schurz** (1833-1876), educator — opened the first U.S. kindergarten in Watertown in 1856, married to Carl Schurz.
- C. Latham Sholes** (1819-1890), inventor and journalist — developed first practical typewriter.
- Donald Kent “Deke” Slayton*** (1924-1993), astronaut — flew the first joint U.S.-Soviet space mission; awarded NASA Distinguished Service Medal in 1965.
- Walter W. “Red” Smith*** (1905-1982), sports columnist and commentator — first sportswriter to receive the Pulitzer Prize (1976) for distinguished criticism as a reporter with the *New York Times*.
- Tom Snyder*** (1936-2007), broadcaster — hosted national late-night television talk shows.
- Harry Steenbock*** (1886-1967), biochemist — produced Vitamin D in food by irradiation with ultraviolet light.
- Brooks Stevens*** (1911-1995), industrial designer — one of the founders of the Industrial Designers Society of America; designer of many notable automobiles and other items including trains, motorcycles, and appliances.
- Howard Temin** (1934-1994), scientist — winner of 1975 Nobel Prize in physiology for work on the relationship between viruses and cancer.
- Spencer Tracy*** (1900-1967), actor — won Academy Award for *Boys Town* and *Captains Courageous*.
- Frederick Jackson Turner*** (1861-1932), historian — developed noted theories regarding the American frontier; won 1933 Pulitzer Prize for history.
- Charles Van Hise*** (1857-1929), educator — president, University of Wisconsin 1903-1918; promoted the expansion of the university into many new fields, influenced the organization of graduate study as a separate division, and saw university enrollment double.
- Thorstein Veblen*** (1857-1929), economist — wrote *The Theory of the Leisure Class*.

- William Vilas** (1840-1908), political leader — served as U.S. Postmaster General, Secretary of Interior, and U.S. Senator; organized the Rural Free Delivery (RFD) mail system.
- Cadwallader C. Washburn** (1818-1882), multimillionaire businessman, congressman, and governor — had extensive flour, rail, and lumber business interests.
- Orson Welles*** (1915-1986), actor and director — performed in theater, radio, television, and motion pictures; directed and starred in the highly acclaimed movie, *Citizen Kane*.
- Laura Ingalls Wilder*** (1867-1957), author of children's books — wrote a series of books, including *Little House on the Prairie*, based on her life growing up in the Midwest.
- Thornton N. Wilder*** (1897-1975), playwright and novelist — received Pulitzer Prize for the novel *The Bridge of San Luis Rey* (1928) and the plays *Our Town* (1938) and *The Skin of Our Teeth* (1942).
- Frances Willard** (1839-1898), social reformer — organized the Woman's Christian Temperance Union.
- Daniel Hale Williams** (1856-1931), doctor — first physician to perform open heart surgery; only African American fellow in the original American College of Surgeons; began study of medicine in Janesville.
- Laura Ross Wolcott** (1834-1915), physician and suffragist — first woman physician in Wisconsin; active in organizing and first president of the Wisconsin Woman's Suffrage Association.
- Frank Lloyd Wright*** (1867-1959), architect — internationally known innovative designer.
-

Note: Only deceased Wisconsin citizens are included in this list.

*Born in Wisconsin.

Sources: Encyclopedias, books, newspaper, and periodical accounts.

HISTORIC SITES IN WISCONSIN

Site	Location	Paid Attendance ¹				2009-10 Revenue ²
		2006-07	2007-08	2008-09	2009-10	
Bennett Studios	Wisconsin Dells	3,107	2,889	2,873	2,283	\$52,148
Madeline Island	La Pointe	13,791	13,987	11,604	11,422	114,836
Old World Wisconsin	Eagle	48,491	46,950	43,496	42,615	779,827
Pendarvis	Mineral Point	4,672	4,707	4,235	4,233	51,302
Stonefield	Cassville	3,613	4,349	4,123	4,682	39,053
Villa Louis	Prairie du Chien	12,242	11,974	11,483	12,002	129,433
Wade House	Greenbush	13,709	15,917	15,283	13,084	144,331
TOTAL		99,625	100,773	93,097	90,321	\$1,310,930
Circus World Museum ³	Baraboo	41,085	34,879	40,123	36,100	\$764,856

¹Sites are generally open from May to October. For current information: <http://www.wisconsinhistory.org/sitesmuseum.asp>.

²Revenues from admissions, rentals, and inside sales (such as museum stores, restaurants, and rides).

³Statistics are for calendar year. Owned by the State Historical Society of Wisconsin, but operated by a private, nonprofit foundation.

Source: State Historical Society of Wisconsin, departmental data, June 2011.

**OFFICIAL HISTORICAL MARKERS IN WISCONSIN
October 2010**

County	Location/Nearest Community	Subject
Adams	At the Park, Hwy 13, 3 miles north of Friendship	Roche-a-Cri State Park
Adams	S. Arkdale Cemetery, 1801 Cypress Ave., Town of Strongs Prairie	Site of First Norwegian Evangelical Lutheran Church of Roche-a-Cri
Ashland	Bay View Park, Hwy 2, Ashland	Fleet Admiral William D. Leahy
Ashland	Northland College campus, Ellis Avenue, Ashland	Northland College
Ashland	In park on Hwy 2 at western limits of Ashland	Radisson-Groseliers Fort
Ashland	La Pointe, Madeline Island	Madeline Island
Ashland	Hwy 13, 10 miles south of Mellen	Great Divide
Ashland	Hwy 2, Odanah	The Bad River
Barron	Rest Area #34, westbound Hwy 53, 2 mi. south of Chetek	Pine Was King (Pineries)
Barron	2411-23 Street, Rice Lake	Our Lady of Lourdes Catholic Church
Bayfield	Herbster Community Center, STH 13, one block south of Lenawee Rd., Herbster	"The Gym"
Bayfield	Hwy 13, 0.5 mile east of Cornucopia	Tragedy of the Siskiwit
Bayfield	Hwy 13, Port Wing	School Consolidation
Bayfield	Hwy 13, 2.3 miles north of Washburn	Madeline Island
Brown	Denmark War Memorial Pk., Wisconsin Ave. (CTH KB)	Denmark
Brown	In park at corner of Broadway and George Sts., De Pere	Marquette-Joliet Expedition
Brown	In Voyageur Park, De Pere	Rapides des Peres – Voyageur Park
Brown	403 North Broadway, De Pere	White Pillars
Brown	222 South Baird Street, Green Bay	Cnesses Israel Synagogue
Brown	Outside Packer Hall of Fame, Green Bay	Green Bay Packers
Brown	1008 South Monroe Avenue, Green Bay	Hazelwood
Brown	2640 South Webster Avenue, Green Bay	Heritage Hill State Park
Brown	Hwy 57, 5 miles northeast of Green Bay	Red Banks
Brown	Holy Apostles Church Cemetery, 2937 Freedom Rd., Oneida	Revolutionary War Veteran (Powlis)
Buffalo	Hwy 35, 0.5 mile north of Alma	Beef Slough
Burnett	Crex Meadows Wildlife Area, off Hwy F, N. of Grantsburg	Crex Meadows
Calumet	Wayside #4, intersection of Hwys 55 and 151, Brothertown	Brothertown Indians of Wisconsin
Calumet	City Hall, 2110 Washington Street, New Holstein	New Holstein
Calumet	Junction of CTH T and Church Rd., New Holstein	St. Martins Church
Calumet	Stockbridge Harbor, CTH E, Village of Stockbridge	Stockbridge Harbor
Chippewa	Hwy 124, 3 miles north of Chippewa Falls	Nation's First Cooperative Generating Station
Chippewa	2820 East Park Avenue, Chippewa Falls	Northern WI Center for the Developmentally Disabled
Chippewa	Fairgrounds, 308 Jefferson Ave., Chippewa Falls	Northern Wisconsin State Fair
Chippewa	Cornell Mill Yard Park and Bridge St., Cornell	Cornell Pulpwood Stack
Chippewa	West side of Hwy 178, near Hwy T	Cobban Bridge
Chippewa	Hwy 178, 0.5 mile north of Jim Falls	Old Abe, the War Eagle
Clark	2 blocks west of Hwy 13, Colby	Colby Cheese
Columbia	Rest Area #12, westbound 190-94, E. of WI River	The Circus
Columbia	711 West James Street, Columbus	Governor James Taylor Lewis
Columbia	Hwy 113 at Wisconsin River crossing	Merrimac Ferry
Columbia	120 N. Main Street, Pardeeville	Historic Pardeeville
Columbia	Hwy 33, 0.5 mile east of Portage	Fort Winnebago
Columbia	West Wisconsin and Crook Streets, Portage	Frederick Jackson Turner
Columbia	Across from sheriff's office, Cook Street, Portage	Ketchum's Point
Columbia	Hwy 33, 0.5 mile east of Portage	Marquette
Columbia	Hwy CM, 5 miles northeast of Portage	Potters' Emigration Society
Columbia	Museum at The Portage, 804 MacFarlane Rd., Portage	Society Hill Historic District

OFFICIAL HISTORICAL MARKERS IN WISCONSIN

October 2010–Continued

County	Location/Nearest Community	Subject
Columbia	Commerce Plaza Park, 301 West Wisconsin St., Portage	Zona Gale
Columbia	Rest Area #11, eastbound 190-94, 0.5 mi. E. of WI River	Rest Areas on the I-Roads
Columbia	Hwy 51, 0.5 mile south of Poynette	John Muir View
Columbia	Hwy 16, 4 miles east of Wisconsin Dells	Kingsley Bend Indian Mounds
Columbia	314 Broadway, Wisconsin Dells	Stroud Bank
Columbia	Village Park, 150 Lovers Lane, Wycocena	Major Elbert Dickason/Dickason's "Hotel"
Crawford	US-35, near River View Park, 0.3 miles north of CTH C, Ferrville	Patrick Joseph Lucey
Crawford	Hwy 171, 0.5 mile east of Gays Mills	Gays Mills Apple Orchards
Crawford	Hwy 35, 1.2 miles south of Lynxville	Rafting on the Mississippi
Crawford	Cornelius Family Park, 211 S. Main St., Prairie du Chien	Black Hawk's Surrender
Crawford	Fort Crawford Museum, 717 S. Beaumont Rd., Prairie du Chien	Fort Crawford
Crawford	Mississippi River Bridge, Prairie du Chien	Pere Marquette and Sieur Jolliet
Crawford	Beaumont and Rice Streets, Prairie du Chien	Museum of Medical Progress
Crawford	Mississippi River Bridge, Prairie du Chien	Prairie du Chien
Crawford	At entrance, Villa Louis Road, Prairie du Chien	Villa Louis
Crawford	521 N. Villa Road, Prairie du Chien	Villa Louis
Crawford	In lawn west of the Villa, Villa Louis, Prairie du Chien	War of 1812
Crawford	Hwy 61, 0.5 mile south of Soldiers Grove	James Davidson
Crawford	Soldiers Grove Park, Mill and Main Sts., Soldiers Grove	Soldiers Grove Origin
Dane	In park off Hwy A, Albion	Albion Academy
Dane	8770 Ridge Drive, Belleville	Primrose Lutheran Church
Dane	1 mile northeast of Blue Mounds, Hwy F	Brigham Park
Dane	Quivey's Grove, 6261 Nesbitt Road, Fitchburg	Mann House
Dane	2915 Syene Rd., Fitchburg	McCoy House
Dane	Camp Randall Memorial Park, UW-Madison campus	Camp Randall
Dane	8-12 N. Blount St., Madison	Ceramic Art Studio of Madison
Dane	4718 Monona Dr., Madison	Nathaniel Dean, Dean House
Dane	Vilas Communication Hall, UW-Madison campus	9XM-WHA
Dane	Bascom Hill, UW-Madison campus	North Hall
Dane	GEF III, 125 S. Webster St., Madison	Peck Cabin
Dane	Resurrection Cemetery, 2705 Regent St., Madison	Site of Former Greenbush Cemetery Burials
Dane	Olbrich Park, 3330 Atwood Ave., Madison	Third Lake Passage
Dane	415 E. Wilson St., Madison	Tragedy of War
Dane	816 State Street, Madison	State Historical Society
Dane	501 South Thornton Avenue, Madison	Yahara River Parkway
Dane	Indian Lake County Park, Hwy 19, 1 mi. E. of Marxville	Indian Lake Passage
Dane	Village Park, 39 Brodhead Street, Mazomanie	Historic Mazomanie
Dane	Branch Creek Conservancy Pk, Pleasant Branch Rd., Middleton	Pheasant Branch Encampment
Dane	Indian Mound Pk., 6200 Bl. of Ridgewood Ave., Monona	Outlet Mound
Dane	2455 West Broadway, Monona	Royal Airport/Charles Lindbergh
Dane	Entrance to Prairie Mound Cemetery, CTH M, Vil. of Oregon	Revolutionary War Veteran
Dane	Hwy 51, east shore of Lake Waubesa	Stephen Moulton Babcock (1843-1931)
Dane	Yahara River Bridge, W. Main St., 381 E. Main St., Stoughton	Main Street Historic District
Dane	La Follette County Park, 3 miles north of Stoughton	Robert Marion La Follette, Sr. (1855-1925)
Dane	300 E. Main Street, Sun Prairie	Georgia O'Keeffe
Dodge	214-216 Front St., Beaver Dam	Frederick Douglas
Dodge	Adams Spring Park, Spring Street, Fox Lake	Bernard "Bunny" Berigan (1908-1942)
Dodge	Addie Joss Park, Juneau	Adrian "Addie" Joss
Dodge	105 N. River St., Lowell	Lowell Women Firefighters
Dodge	Rest Area #64, northbound Hwy 41	World War II
Dodge	Hwys 28 and 67, on Main Street, Mayville	Wisconsin's First Iron Smelter
Dodge	Hwy 175, Theresa	Solomon Juneau House
Dodge	Jct. Hwys 26 and 67, Waupun	Auto Race – Green Bay to Madison
Door	12171 Garrett Bay Rd., Ellison Bay	The Clearing
Door	Noble Square, 4167 Main Street, Fish Creek	The Alexander Noble House
Door	Namur, Hwy 57	Belgian Settlement in Wisconsin
Door	6145 Cave Point Drive, Town of Jacksonport	Jacksonport United Methodist Church
Door	Olde Stone Quarry Park, CTH B, Town of Sevastopol	Leatham and Smith Quarry
Door	3434 CTH V, Sturgeon Bay	The Episcopal Church of the Holy Nativity
Door	Hwy 42, 0.5 mile north of junction with Hwy 57	The Orchards of Door County
Douglas	Hwy 2, Brule	Brule River
Douglas	Hwys F and B, Lake Nebagamon	Evergreen Park Cottage Sanatorium
Douglas	Hwy 2, Poplar	Major "Dick" Bong
Douglas	Hwy 53, 1.5 miles south of Solon Springs	Brule-St. Croix Portage
Douglas	Allouez (Superior), along Hwys 2, 13, and 53	Burlington Northern Ore Docks
Douglas	Rest Area #23, Hwys 2 & 53, southern limits of Superior	Northwest Portal of Wisconsin
Douglas	Memorial Park, Superior	Old Stockade Site
Douglas	Whalebark Museum, Barker's Island, Superior	S. S. Meteor, last of the Whalebacks
Douglas	Superior Central High School, 1015 Belknap St., Superior	Summer White House – 1928
Douglas	Harbor Entry, Wisconsin Point Road, Superior	The Superior Entry
Douglas	Between McCaskill and Holden Bldgs., UW-Superior	University of Wisconsin-Superior
Douglas	Tourist Information Center, City Park, Hwy 2, Superior	Wartime Shipbuilding
Dunn	Caddie Woodlawn Park, Hwy 25, Menomonie	Caddie Woodlawn
Dunn	Rest Area #61, eastbound 194, Menomonie	Chippewa Valley White Pine
Dunn	Evergreen Cemetery, Menomonie	Dr. Stephen Tainter – Revolutionary War Veteran
Dunn	Evergreen Cemetery, north end of Shorewood Dr., Menomonie	Earliest Evergreen Burials/Evergreen Cemetery
Dunn	205 Main Street, Menomonie	Mabel Tainter Memorial

OFFICIAL HISTORICAL MARKERS IN WISCONSIN

October 2010–Continued

County	Location/Nearest Community	Subject
Dunn	Rest Area #62, I94	World War I
Eau Claire	Dells Mills Museum, N. of Augusta on STH 27, Augusta.	Dells Mills
Eau Claire	Wayside #4, Hwy 85, 0.5 mi. west of Hwy 37, Eau Claire	Silver Mine Ski Jump
Fond du Lac	Fond du Lac Co. Park, W11413 CTH TC, Brandon	The Raube Road Site
Fond du Lac	Hwy 151, 6 miles north of Fond du Lac	Edward S. Bragg
Fond du Lac	Rolling Meadows Golf Course, 560 W. Rolling Meadows Dr., Fond du Lac	County Home Cemetery Fond du Lac
Fond du Lac	Main Street and Forest Avenue, Fond du Lac	Military Road
Fond du Lac	30 East 2nd Street, Fond du Lac	Wisconsin Progressive Party
Fond du Lac	St. John the Baptist Church, Hwy W, Johnsburg	Father Caspar Rehl
Fond du Lac	Southeast corner of Blackburn and Blossom Sts., Ripon	Birthplace of Republican Party
Fond du Lac	Pedrick Wayside, Hwy 23, Ripon	Carrie Chapman Catt
Fond du Lac	In park on Union Street, 1 block south of Hwy 23, Ripon	Ceresco
Fond du Lac	Ripon College campus, Ripon	Ripon College
Fond du Lac	Taycheedah Correctional Institution, Tn. of Taycheedah	Home of Governor James Duane Doty
Fond du Lac	Hwy 49, 4 miles east of Waupun	Horicon Marsh
Forest	Hwy 8, 1.8 miles east of Crandon	Northern Highland
Forest	Hwy 32, 1 mile south of Laona	Laona School Forest
Forest	Hwy 55, 0.5 mile north of Mole Lake	Battle of Mole Lake
Grant	Hwy 61, 0.3 miles south of Boscobel	The Gideons
Grant	Cassville	Village of Cassville
Grant	117 East Front Street, Cassville	Old Dennison House
Grant	620 Lincoln Avenue, Fennimore	The "Dinky"
Grant	Hwy 80 at the WI-IL state line, south of Hazel Green.	Point of Beginning (Survey Point)
Grant	Cemetery, 1 block west of Hwys 61, 35, and 81, Lancaster.	Nelson Dewey
Grant	Highway 35 and Slattown Rd., 5 miles west of Lancaster	Pleasant Ridge
Grant	Rountree Hall, UW-Platteville	First State Normal School
Grant	144-108 South Main St., Potosi	Village of Potosi
Green	English Settlement Cemetery, 300 North Main St., Albany	English Settlement Cemetery
Green	Monroe Arts Center, 1315 11th St., Monroe.	First Methodist Episcopal Church
Green	Monticello Monument Wayside, Hwy 69, Monticello.	Nickolaus Gerber
Green	Village Park, 300 Blk of 2nd St., Hwy O, New Glarus	Herbert Kubly
Green	Hwy 69, New Glarus.	New Glarus
Green Lake	Nathan Strong Park, East Huron St. (Hwy 116), Berlin.	Lucy Smith Morris
Green Lake	Riverside Park, Berlin	Upper Fox River
Iowa	Hwy 14, 3 miles east of Arena.	Village of Dover
Iowa	CTH Y, 3 mi. S. of Dodgeville.	Dodge's Grove and Fort Union
Iowa	Courthouse lawn, Hwy 151, Dodgeville.	Iowa County Courthouse
Iowa	Hwy YZ, 4 miles east of Dodgeville.	Old Military Road
Iowa	Water Tower Park, Hwy 151, Mineral Point.	Historic Mineral Point
Iowa	Iowa Co. Fairgrounds, 900 Fair St., Mineral Point	Laurence F. Graber, "Mr. Alfalfa"
Iowa	114 Shake Rag Street, Mineral Point	Shake Rag
Iowa	Library Park, Mineral Point	Wisconsin Territory
Iowa	9 Fountain St., Mineral Point	Site of Fort Jackson
Iowa	Frank Lloyd Wright Visitor Ctr., CTH C, Spring Green.	Military River Crossing
Iowa	Hwy 14, east of Wisconsin River, near Spring Green	Frank Lloyd Wright
Iowa	Tower Hill State Park, Hwy C, south of Hwy 14	Shot Tower
Iron	Hwy 2, 1 mile west of Hurley	Gogebic Iron Range
Iron	Wayside WI Info. Ctr., Hwy 8, 1 mile north of Hurley.	Iron Mining in Wisconsin
Jackson	Hwys 121 and 95, 1.5 mile west of Alma Center	Silver Mound
Jackson	Bell Mound Scenic Overlook, 5 mi. S. of Black River Falls	Black River Valley Scenic Outlook
Jackson	Hwy 54, 5 miles east of Black River Falls.	Mitchell Red Cloud, Jr. (1925-1950)
Jackson	Rest Area #8, westbound I94, 15 mi. SE Black River Falls	The Passenger Pigeon
Jackson	Rest Area #7, eastbound I94, 15 mi. SE Black River Falls	Sphagnum Moss
Jackson	Rest Area #6, westbound I94	Highground Veterans Memorial
Jackson	Hwy 27, 6 miles south of Black River Falls.	Martin W. Torkelson
Jefferson	Aztalan Museum, N6284 Hwy Q, Tn. of Aztalan	Princess Burial Mound
Jefferson	In park, north off Hwy 12, just east of Cambridge	Lake Ripley – Ole Evinrude
Jefferson	Burnt Village Co. Park, Hwy N, 2 mi. SE of Ft. Atkinson	Black Hawk War Encampment "Burnt Village"
Jefferson	400 block of Milwaukee Avenue East, Fort Atkinson	Fort Koshkonong
Jefferson	Koshkonong Mounds Road, near Fort Atkinson.	Lake Koshkonong Effigy Mounds
Jefferson	Blackhawk Island Road, Town of Sumner.	Lorine Niedecker
Jefferson	Hwy 106, western city limits of Fort Atkinson	Panther Intaglio
Jefferson	Iola Mills, 300 North Main St., Iola	Iola Mills
Jefferson	Rest Area #14, westbound I94	In Service to Their Country
Jefferson	3 miles east of Lake Mills on Hwy B, south on Hwy O.	Aztalan State Park
Jefferson	Rest Area #13, eastbound I94, 1 mile east of Lake Mills	Drumhins
Jefferson	Bald Bluff Overlook, CTH H, 1 1/2 mi. S. of Palmyra	Black Hawk War Encampment
Jefferson	919 Charles St., Watertown	First Kindergarten
Jefferson	7 miles southeast of Watertown, Hwy 16	Highway Marking
Jefferson	Milwaukee Street at the Rock River, Watertown	Milwaukee Street Bridge
Jefferson	919 Charles Street, Watertown.	Octagon House
Jefferson	One Main St. (at bridge), Watertown	Trail Discovery
Juneau	Hwy C, 0.5 mile east of Camp Douglas	Castle Rock
Juneau	Camp Williams, off I94	Wisconsin Military Reservation
Juneau	On the trail at the western edge of Elroy	Elroy-Sparta State Trail
Juneau	In village park, Hwy HH, Lyndon Station.	Hop Raising
Juneau	Rest Area #10, westbound I90-94	The Sand Counties – Aldo Leopold Territory
Juneau	Rest Area #9, eastbound I90-94, near Mauston	The Wisconsin River
Juneau	Rest Area #9, eastbound I90-94, near Mauston	The Iron Brigade
Kenosha	Rest Area #126, I94	Cordelia A.P. Harvey
Kenosha	24th Ave. & 56th St., Kenosha.	Auto Production in Kenosha
Kenosha	Hwy 31 eastbound at 95th St., Kenosha.	Green Bay Ethnic Trail

OFFICIAL HISTORICAL MARKERS IN WISCONSIN

October 2010–Continued

County	Location/Nearest Community	Subject
Kenosha	Green Ridge Cemetery, 6604 Seventh Ave., Kenosha	John McCaffery Burial Site
Kenosha	6501 3rd Avenue, Kenosha	Kemper Hall
Kenosha	5117 – 4th Ave., Kenosha	Kenosha (Southport) Lighthouse
Kenosha	Library Park, Kenosha	Reuben Deming
Kenosha	Green Ridge Cemetery, 6604 Seventh Avenue, Kenosha	Revolutionary War Veterans
Kenosha	15620 12th St., Kenosha	Schaefer Mammoth Site
Kenosha	Hwy 32 at the southern edge of Kenosha	32nd Division Memorial Highway
Kenosha	Rest Area-Tourist Info. Ctr. #26, westbound 194, N of 111	The Name "Wisconsin"
Kenosha	SE corner of STHs 50, 75, and 83, Town of Salem	Brass Ball Corners
Kewaunee	Ferry yard, Kewaunee	Car-Ferry Service
La Crosse	Rest Area #15, eastbound 190	The Driftless Area
La Crosse	McGilvray Rd. Access, Van Loon State Wildlife Area	The McGilvray "Seven Bridges Road"
La Crosse	Halfway Creek Lutheran Church, 2.5 mi. E. of Holmen	Luther College
La Crosse	Bishop's View Overlook, Hwy 33, 5 mi. E. of La Crosse	The Coulee Region
La Crosse	Rest Area #31, 194, French Island, La Crosse	Major General C.C. Washburn
La Crosse	La Crosse	Red Cloud Park
La Crosse	Corner of Front and State Streets, La Crosse	Spence Park
La Crosse	Rest Area-Tourist Info. Ctr. #31, 190, La Crosse	Upper Mississippi
La Crosse	Hwy 16 Valley View Mall entrance, just N. of Medary	Valley View Site
La Crosse	Neshonoc Cemetery, West Salem	Hamlin Garland
La Crosse	Swarthout Lakeside Park, Hwy 16, West Salem	Village of Neshonoc
Lafayette	First Capitol State Park, Hwy G, 4 mi. northwest of Belmont	Belmont-Wisconsin Territory 1836
Lafayette	First Capitol State Park, Hwy G, 4 mi. northwest of Belmont	Gov. Tommy G. Thompson's 1998 Address at Wisconsin's First Capitol
Lafayette	First Capitol State Park, Hwy G, 4 mi. northwest of Belmont	1998 Wisconsin Assembly (Sesquicentennial Marker)
Lafayette	Hwy 11, 1 mile west of Benton	Father Samuel Mazzuchelli
Lafayette	Intersection of Hwys E, 78, & Madison St., Blanchardville	Zarahemia – Predecessor of Blanchardville
Lafayette	101 S. Main St., Blanchardville	Zenas Gurley
Lafayette	Hwy 23, 5 miles south of Mineral Point	Fort Defiance
Lafayette	Hwy 11, 1 mile west of Shullsburg	Wisconsin Lead Region
Langlade	Hwy 52, near junction with Hwy 64	Antigo Silt Loam, State Soil of Wisconsin
Langlade	Wayside, Hwy 45, 3 miles south of Antigo	Langlade County Forest, Wisconsin's First County Forest
Langlade	Junction of Hwys 55 and 64, Langlade	De Langlade
Langlade	Hwy 55, 3.5 miles north of Lily at Wolf River	Old Military Road
Lincoln	715 E. 2nd St., Merrill	Merrill City Hall
Lincoln	Hwy 64 over the Prairie River – 200 W. First St., Merrill	Three Arch Stone Bridge
Manitowoc	CTH R, 1/2 mile N. of Schley Rd.	Rock Mill
Manitowoc	Rest Area #51, southbound 143, S. of Brown County line.	Wisconsin's Dairy Industry
Manitowoc	Rest Area #52, northbound 143, S. of Brown County line.	Wisconsin's Maritime Industries
Manitowoc	Lake Michigan Car ferry Dock, 700 S. Lakeview Dr., Manitowoc	S. S. Badger/Manitowoc and the Car Ferries
Manitowoc	Mariner's Park, S. 8th St., at the Manitowoc River	Manitowoc's Maritime Heritage
Manitowoc	Manitowoc Maritime Museum, 75 Maritime Drive	Manitowoc Submarines
Manitowoc	Silver Lake Park, Hwy 151, west of Manitowoc	Winnebago Trail
Manitowoc	924 Pinecrest Lane, Manitowoc Rapids	Collins Road Bridge Span
Manitowoc	Pioneer Rd. and CTH XX, Meeme	Mceme Poll House
Manitowoc	St. Nazianz Village Hall, 228 W. Main St., St. Nazianz	George Washington School
Manitowoc	108 W. Birch, St. Nazianz	St. Nazianz
Manitowoc	Central Park, Two Rivers	Ice Cream Sundae
Manitowoc	Point Beach State Park, N. of Two Rivers on County O	Rawley Point Lighthouse
Manitowoc	Valders Memorial Park, Hwy J, Valders	Thorstein Veblen
Marathon	Rothschild Pk., Grand Ave., Park & Kort Sts., Rothschild	Wisconsin's 1st Home-Built Flying Machine
Marathon	UW-Marathon County park, Wausau	The First Teachers' Training School in Wisconsin
Marathon	Wayside, northbound Hwy 51, 1 mile south of Hwy 153	First Workers Compensation Policy
Marinette	Peshigo Cemetery, Oconto Avenue, Peshigo	Peshigo Fire Cemetery
Marinette	N2155 USH 141, Town of Pound	Lena Road Schoolhouse
Marinette	W2349 County JJ, Wausaukee	McAllister State Graded School
Marquette	Hwy 22, 8 miles south of Montello	John Muir Country
Marquette	Rest Area #82, Hwy 51, 4 miles north of Westfield	Korean War
Marquette	Westfield Town Hall, W 7703 Ember Ave. at 4th	Russell Flats
Menominee	Hwys 47 and 55, 5 miles north of Shawano	Menominee Reservation
Menominee	Hwy, 55, 2.5 miles north of Keshena	Spirit Rock
Milwaukee	8801 West Grange Avenue, Greendale	Wisconsin's Lime Industry
Milwaukee	8685 West Grange Avenue, Greendale	Jeremiah Curtin House
Milwaukee	6500 Northway, Greendale	Village of Greendale
Milwaukee	Junction of 108th St. and Cold Spring Rd., Greenfield	Cold Spring Road
Milwaukee	92nd and Forest Home Ave., Greenfield	Janesville Plank Road
Milwaukee	7325 W. Forest Home Ave., Greenfield	Town of Greenfield
Milwaukee	Zillman Park, S. Kinnickinnic Ave., Milwaukee	Bay View's Immigrants
Milwaukee	South Superior Street and East Russell Ave., Milwaukee	Bay View's Rolling Mill
Milwaukee	2000 West Wisconsin Avenue, Milwaukee	Captain Frederick Pabst
Milwaukee	Zeidler Park, 300 block of West Michigan St., Milwaukee	Carl Frederick Zeidler
Milwaukee	East Hartford & North Maryland Aves., UW-Milwaukee	Carl Sandburg Park
Milwaukee	1756 North Prospect Avenue, Milwaukee	Civil War Camp
Milwaukee	Lobby, 700 West Virginia Street, Milwaukee	The Cream City
Milwaukee	Grounds of VA Hospital, Wood (Milwaukee)	Erastus B. Wolcott, M.D.
Milwaukee	Fourth Street and Kilbourn Avenue, Milwaukee	First African-American Church Built in Wisconsin
Milwaukee	Foot of East Michigan Street, Milwaukee	First Milwaukee Cargo Pier
Milwaukee	Layton Avenue, Milwaukee	General Mitchell Field
Milwaukee	Golda Meir Library on UW-Milwaukee campus	Golda Meir

OFFICIAL HISTORICAL MARKERS IN WISCONSIN

October 2010–Continued

County	Location/Nearest Community	Subject
Milwaukee	4th and State Streets, Milwaukee	Invention of the Typewriter
Milwaukee	Marquette Law School, 1103 W. WI Ave., Milwaukee	Mabel Wanda Raimey
Milwaukee	Civic Center, Milwaukee	MacArthur Square
Milwaukee	Merrill Park, 461 North 35th St., Milwaukee	Merrill Park
Milwaukee	Currie Park, Wauwatosa	Milwaukee County's First Airport
Milwaukee	East Hartford and North Downer Avenues, Milwaukee	Milwaukee-Downer College
Milwaukee	231 West Michigan Street, Milwaukee	Milwaukee Interurban Terminal, 1905-1951
Milwaukee	Zablocki VA Medical Center, Hwy 59	National Soldiers Home
Milwaukee	At the lighthouse in Lake Park, Milwaukee	North Point Lighthouse
Milwaukee	East North Avenue, Milwaukee	Old North Point Water Tower
Milwaukee	Wells and Edison Streets, Milwaukee	Oneida Street Station, T.M.E.R. and L. Co.
Milwaukee	144 East Wells Street, Milwaukee	Pabst Theater
Milwaukee	Cathedral Square Park, northeast corner, Milwaukee	Rescue of Joshua Glover
Milwaukee	North Avenue and Lake Drive, Milwaukee	Saint John's Infirmary
Milwaukee	North Lake Drive, Milwaukee	St. Mary's School of Nursing
Milwaukee	North Water and East Erie Streets, Milwaukee	Sinking of the <i>Lady Elgin</i>
Milwaukee	200 North Broadway, Milwaukee	Third Ward Fire
Milwaukee	Mitchell Hall, UW-Milwaukee, North Downer Avenue	The University of Wisconsin-Milwaukee
Milwaukee	Miller Brewing Company, Milwaukee	Watertown Plank Road
Milwaukee	100 East Wisconsin Avenue, Milwaukee	Wisconsin's Oldest Newspaper: <i>The Milwaukee Sentinel</i>
Milwaukee	3500 block on N. Oakland Ave., Shorewood	Luettedman's On-the-River
Milwaukee	4145 N. Oakland Ave., Shorewood	Shorewood Armory
Milwaukee	1701 E. Capitol Drive, Shorewood	Shorewood High School
Milwaukee	3930 N. Murray Ave., Shorewood	Shorewood Village Hall
Milwaukee	909 Menomonee Ave., South Milwaukee	Lawson Airplane Company
Milwaukee	Wauwatosa Cemetery, 2405-2485 Wauwatosa Ave., Wauwatosa	Revolutionary War Veteran (Morgan)
Milwaukee	State Fair Park, Main Gate, West Allis	Camp Harvey
Milwaukee	In triangle at 57th, Hayes, and Fillmore, West Allis	Meadowmere
Milwaukee	State Fair Park, Main Gate, West Allis	Wisconsin State Fair Park
Monroe	Hwy 12, 4 miles west of Camp Douglas	Mesas and Buttes
Monroe	Rest Area #16, westbound I90, 5 miles east of Bangor	Coulee Country
Monroe	At the Kendall Depot, North Railroad Street, Kendall	Elroy-Sparta State Trail
Monroe	Old Leon School, 20638 Jameson Rd., Sparta	Donald "Deke" Slayton
Monroe	200 West Main Street, Sparta	Masonic Lodge
Monroe	112 South Court Street, Sparta	Monroe County Courthouse
Monroe	124 West Main Street, Sparta	Sparta Free Library
Monroe	123 West Main Street, Sparta	U.S. Post Office
Monroe	In park on Hwy 12, Tomah	Tomah
Oconto	Hwy F, 1.5 miles east of Lakewood	The Holt and Balcom Logging Camp No. 1
Oconto	Chicago and Main Streets, Oconto	First Church of Christ Scientist
Oconto	On Oconto River at Brazeau Avenue, Oconto	Mission of St. Francois Xavier
Oconto	Copper Culture State Park, Oconto	Old Copper Culture Cemetery
Oneida	Oneida County Courthouse grounds, Rhinelander	First Rural Zoning Ordinance
Oneida	Hodag Park, Rhinelander	The Hodag
Oneida	W. edge of National Forest, off Hwy 32 E. of Three Lakes	Nicolet National Forest
Outagamie	807 South Oneida Street, Appleton	First Electric Street Railway
Outagamie	600 Vulcan Street, Appleton	World's First Hydroelectric Central Station
Outagamie	North of jct. Hwys BB and 45, 4 miles west of Appleton	South Greenville Grange No. 225
Outagamie	Thelen Park, Kaukauna	Revolutionary War Veterans
Outagamie	Hwy 96, 0.1 mile west of Little Chute	Treaty of the Cedars
Outagamie	Beacon Avenue and Division Street, New London	Birthplace of the American Water Spaniel
Ozaukee	Intersection of CTHs R & C, Belgium	Wisconsin's Luxembourgers
Ozaukee	Columbia Rd. and Mequon Ave., Cedarburg	Cedar Creek
Ozaukee	City Hall, Washington Avenue, Cedarburg	Historic Cedarburg
Ozaukee	W62 N646 Washington Ave., Cedarburg	Interurban Bridge
Ozaukee	Doctor's Park, Washington Ave. and Mill St., Cedarburg	Washington Avenue Historic District
Ozaukee	Covered Bridge Road, 1 mile north of Five Corners	Last Covered Bridge
Ozaukee	Mequon City Hall, 11333 North Cedarburg Rd., Mequon	Wisconsin's German Settlers
Ozaukee	108 N. Lake St., Port Washington	The Wisconsin Chair Company Fire
Ozaukee	Triangle Park and Green Bay Rd., Saukville	The Saukville Trails
Ozaukee	Entrance Walk, 250 S. Main St., Thiensville	Historic Thiensville
Ozaukee	Junction of Hwys F and M, 3 miles west of Thiensville	The Oldest Lutheran Church in Wisconsin
Ozaukee	Hwy I, 0.5 mile east of Waubeka	Birthplace of Flag Day
Pepin	Washington Square, Durand	Pepin County Courthouse
Pepin	Hwy 35, 1 mile north of Stockholm	Laura Rock
Pepin	Hwy 35, Pepin Park	Laura Ingalls Wilder
Pepin	Hwy 35, 3 miles northwest of Pepin	Site of Fort St. Antoine
Pierce	Hwy 35, 1 mile south of Hwy 63, southeast of Hager City	"Bow and Arrow"
Pierce	Hwy 35, 3 miles west of Maiden Rock	Lake Pepin
Pierce	Spring Pond Park, East Mill Rd., Plum City	Historic Plum City
Pierce	Hwy 65, 3 miles south of I94	Edgar Wilson Nye
Polk	Hwy 35, Lusk	Danish Cooperative Company
Polk	City Park, St. Croix Falls	The Battle of St. Croix Falls
Polk	Interstate Park, St. Croix Falls	Gaylord Nelson
Polk	Interstate Park, Hwy 8, St. Croix Falls	State Park Movement in Wisconsin
Polk	Overlook Park, N. Washington (Main) St., St. Croix Falls	Where Are the Falls of the St. Croix?
Portage	County W, Buena Vista Marsh Wildlife Area	Wisconsin's Greater Prairie Chicken
Portage	Portage County Park, Hwy E, 3 miles south of Knowlton	Du Bay Trading Post
Portage	1700 block of Monroe St., Stevens Point	The Historic Southside Railroad Complex of Stevens Point
Price	Movrich Park, Willow Avenue, Town of Fifield	Historic Fifield
Price	Hwy 13, Phillips City Park, Phillips	Phillips Fire

OFFICIAL HISTORICAL MARKERS IN WISCONSIN

October 2010–Continued

County	Location/Nearest Community	Subject
Racine	Weimhoff-Jucker Park, Burlington	Mormons in Early Wisconsin
Racine	Hwy 31 at 5 Mile Rd., Town of Caledonia	Bohemian School House
Racine	Zoological Gardens, 2131 N. Main St., Racine	Northside Historic District of Cream Brick Cottages
Racine	Graceland and Mound Cemeteries, 1147 West Blvd., Racine	Soldiers of the American Revolution
Racine	Simonsen Park, Main & Fourteenth Sts., Racine	Southside Historic District
Racine	Hwy 11, western limits of Racine	The Spark
Racine	Racine Village Park, 4725 Lighthouse Dr., Racine	The Wind Point Lighthouse
Racine	1407 71st Drive, Union Grove	Revolutionary War Veteran
Racine	Heg Park Road, Waterford	Old Muskego
Richland	Boaz Park, Hwy 171, Boaz	Ocooch Mountains
Richland	Boaz Park, Hwy 171, Boaz	Richard M. Brewer
Richland	Wayside, Hwy 14, 1 mi. E. Gotham, Town of Buena Vista	The Pursuit West
Richland	Krouskop Park, 400 W. 6th St. (Hwy 14), Richland Center	Ada James
Richland	Krouskop Park, 400 W. 6th St. (Hwy 14), Richland Center	Birthplace of General Telephone and Electronics Corporation (GTE)
Richland	Hwy 14, 5 miles west of Richland Center	Boaz Mastodon
Richland	Pier County Park, Hwy 80, Rockbridge	Rockbridge
Richland	5 miles west of Richland Center on Hwy 14	Rural Electrification
Richland	Pier Co. Park, Hwy 80, Rockbridge	Troop Encampment
Rock	Beloit College campus, Beloit	Beloit College
Rock	Rock River Heritage Wky., Public Ave. & State St., Beloit	Black Hawk at Turtle Village
Rock	Tourist Info. Ctr. #22, westbound 190, south of Beloit	Black Hawk War
Rock	Rest Area-Tourist Information Center, westbound 190	Medal of Honor
Rock	143 at 190, Beloit	Wisconsin's First Aviator
Rock	Hwy 140, 4 miles south of Clinton	Jefferson Prairie Settlement
Rock	11204 N. Church St., Cooksville	Historic Cooksville/Historic Waucoma
Rock	Mt. Phil. Cemetery, west of Darien	Soldier of the American Revolution
Rock	Hwy 51, 0.5 miles south of Edgerton	Wisconsin's Tobacco Land
Rock	Blackhawk Golf Course Clubhouse, 2100 Palmer, Janesville	The Black Hawk War/Black Hawk's Grove
Rock	NW corner of Delavan Dr. and Beloit Ave., Janesville	Burr Robins Circus
Rock	In Courthouse Park on S. Atwood Ave., Janesville	First State Fair, October 1-2, 1851
Rock	Rock County Historical Society, 10 S. High St., Janesville	Janesville Tank Company
Rock	Rest Area #17, eastbound 190	Rock River Industry
Rock	Hwy 51, 3.8 miles south of Janesville	Route of Abraham Lincoln 1832 and 1859
Rock	18 South Janesville Street, Hwy 26, Milton	Milton House
Rock	On southwest bank of Storr's Lake, off Hwy 26, Milton	Storr's Lake, Milton
Rock	Beckman Mill Co. Park, Co. Rd. H, Town of Newark	How-Beckman Mill
Rock	Hwy J, Shopiere	Home of Governor Harvey
Rusk	Appollonia Cong. Church, Hwy 8 & Cemetery Rd., Bruce	Appollonia
Rusk	Hwy 8, Weyerhaeuser	Chippewa River and Menomonic Railway
St. Croix	Rest Area-Tourist Info. Ctr. #25, 194 east of Hudson	Brule-St. Croix Waterway
St. Croix	Hwy 35, 4.7 miles north of Hudson	St. Croix River
St. Croix	Campus Drive, Outlot #3, New Richmond	New Richmond Cyclone
Sauk	Devil's Lake State Park, S5975 Park Rd., Baraboo	Civilian Conservation Corps
Sauk	Hwy 33 at County U, 5 miles east of Baraboo	Lower Narrows
Sauk	Hwy 12, 1.5 miles south of Baraboo	Ringling Brothers Circus
Sauk	CTHA, a junction of Old County Hwy A and Dam Rd., Lake Delton	Lake Delton Catastrophe
Sauk	E8948 Diamond Hill Rd., North Freedom	Mid-Continent Railway Historical Society
Sauk	Reedsburg Area Historical Park, 3 mi. E. of Reedsburg	Clare A. Briggs, Cartoonist
Sauk	State Hwy 136, 0.75 mi. N. of STH 154, Rock Springs	Van Hise Rock
Sauk	Derleth Park, Water Street, Sauk City	August W. Derleth
Sauk	Hwy 12, 5 miles northwest of Sauk City	The Baraboo Range
Sauk	Lower WI Riverway, Hwy 78, 2 mi. N. of Sauk City	Battle of Wisconsin Heights
Sauk	Lower WI Riverway, Hwy 60, 2 mi. E. of Spring Green	Western Escape
Sauk	Hwy A, 1.5 miles south of Wisconsin Dells	Dawn Manor – Site of Lost City of Newport
Sauk	Hwy 16, 0.1 mile west of Wisconsin Dells	Wisconsin Dells
Sawyer	Hwys 70 and 27, Couderay	Court Oreilles
Sawyer	Hwys 27 and 70, 7 miles west of Couderay	Radisson-Groseilliers
Sawyer	Hermans Landing, Cty Rd CC, at bridge, Hayward	The Chippewa Flowage
Sawyer	Lac Courte Oreilles Reservation, 13891 W. Mission Rd.	St. Francis Solanus Indian Mission
Sawyer	Hwy 27, 5.5 miles south of Hayward	Namekagon-Court Oreilles Portage
Sawyer	Hwy W, 6.75 miles southeast of Winter	John Deitz, "Battle of Cameron Dam"
Shawano	Hwy 22, 3.5 miles east of Shawano	Shawano
Shawano	Hwy 45 at city limits of Wittenberg	Homme Homes
Sheboygan	50 South Main Street, Cedar Grove	Early Dutch Settlers in Wisconsin
Sheboygan	Lake Street Cafe, Beer Garden, N. of Vil. of Elkhart Lake	Elkhart Lake – Road Race Circuits
Sheboygan	Hwy 23, in the Park at Greenbush, 6 mi. W. of Plymouth	Old Wade House State Park
Sheboygan	Memorial Park, Cedar Grove, 3 miles south of Oostburg	Dutch Settlement
Sheboygan	Heritage House Triangle Pk., Ctr. & N. 10th Sts., Oostburg	Historic Oostburg
Sheboygan	Greenleaf Historic Park, 900 Short Street, Random Lake	Nowack House
Sheboygan	Sheboygan North Point Park, North Point Dr., Sheboygan	The <i>Phoenix</i> Tragedy
Sheboygan	Wildwood Cemetery, 2026 New Jersey Ave., Sheboygan	Revolutionary War Veteran (David Waldo)
Sheboygan	Center Avenue and North Water Street, Sheboygan	Seils-Sterling Circus
Sheboygan	9th Street and Panther Avenue, Sheboygan	Sheboygan Indian Mound Park
Sheboygan	1138 Union Ave., Sheboygan	Veterans of Foreign Wars Post 1230
Sheboygan	Rochester Inn, 504 Water St., Sheboygan Falls	Cole Historic District
Sheboygan	Sheboygan River Dam, Broadway St., Sheboygan Falls	Downtown Sheboygan Falls Historic District
Taylor	Hwy 102, Rib Lake	Rib Lake Lumber Company
Taylor	Hwy 102, 5 miles northeast of Rib Lake	Rustic Road
Trempealeau	Hwy 53, 1.5 miles southeast of Galesville	Decorah Peak
Trempealeau	Junction of East Gale Ave. and Main St., Galesville	Downtown Galesville Historic District

OFFICIAL HISTORICAL MARKERS IN WISCONSIN

October 2010–Continued

County	Location/Nearest Community	Subject
Trempealeau	North of Main Hall, College Ave., Galesville	Galesville College
Trempealeau	Junction of West Ridge Ave. and Sixth St. near Cance Park, Galesville	Ridge Avenue Historic District
Trempealeau	Rest Area #5, eastbound I94, 2 miles southeast of Osseo	Winnebago Indians
Trempealeau	Great River State Tr., Hwy 35, 0.5 mi. E. of Trempealeau	The Mississippi River Parkway: First Project
Trempealeau	Perrot State Park	Brady's Bluff
Trempealeau	Perrot State Park, off Hwy 93	Perrot's Post
Vernon	Hwy 14, 0.5 mile west of Coon Valley	Nation's First Watershed Project
Vernon	Hwy 35, 2.5 miles north of De Soto	Battle of Bad Axe
Vernon	Hwy 35, 2 miles north of De Soto	Chief Win-no-shik, the Elder
Vernon	Hwy 35, Genoa	Dams on the Mississippi
Vernon	In power plant parking lot, west side of Hwy 35, Genoa	Wisconsin's First Nuclear-Fueled Generating Station
Vernon	Hwy 33, 0.1 mile west of Hillsboro	Admiral Marc A. Mitscher
Vernon	Hillsboro Lake Park, 300 Water Ave. at Hwys 80, 82, 33, Hillsboro	African American Settlers of the Cheyenne Valley
Vernon	Hwy 14, 0.5 mile north of Viroqua	Governor Rusk
Vernon	City Hall, 202 N. Main St., Viroqua	Viroqua's First Settler
Vilas	Hwy M, 6 miles south of Boulder Junction	First Forest Patrol Flight
Vilas	Trout Lake Nursery, Hwy M	Forest Restoration – The Beginning
Vilas	Hwy 47, Flambeau Lake	Lac du Flambeau
Vilas	Lac Vieux Desert Park, West Shore Dr. near Land O'Lakes	Lac Vieux Desert
Vilas	Hwys 32 and 45, 0.5 mile south of Land O'Lakes	32nd Division Memorial Highway
Vilas	Hwy 45, 1.5 miles south of Land O'Lakes	Wisconsin River Headwaters
Vilas	Sayner Park, Sayner	Snowmobile
Walworth	Village Park, Allen Grove, on Hwy X, 3 mi. SW of Darien	Allen Family
Walworth	City of Delavan Parking Lot, 218 South 7th St., Delavan	Birthplace of "The Greatest Show on Earth"
Walworth	Horton Park, Hwy 11 in Delavan	Delavan's Circus Colony
Walworth	Tower Park, Walworth Ave., Delavan	Delavan's Historic Brick Street
Walworth	Grounds of State School for the Deaf, Hwy 11, Delavan	Wisconsin's First School for Deaf
Walworth	300 Church Street, East Troy	East Troy Railroad
Walworth	Veterans Memorial Park, Hwy 12, Genoa City	First Swedish Settlers in Wisconsin
Walworth	Hwy BB, 3.5 miles south of Lake Geneva	Wisconsin's First 4-H Club
Walworth	Oak Grove Cemetery, East Main Street, Whitewater	Revolutionary War Veterans
Walworth	Hwy 67 Industrial Park, N3440 STH 67 Williams Bay	755 Aircraft Control and Warning Squadron
Washburn	Hwy 70, 0.5 mile east of Spooner	Yellow River
Washburn	Junction of Hwys 53 and 63, Trego	Namekagon River
Washington	Dheinsville Park, Holy Hill Rd., Germantown	Dheinsville Settlement
Washington	Chandelier Ballroom, 700 South Main Street, Hartford	The Schwartz Ballroom
Washington	Hwy 83, Hartford	"Kissel"
Washington	South side of Hwy 33, 550 feet west of jct. with Hwy 144	Great Divide
Washington	At the park, Hwy A, E. of Hwy 114, NW of West Bend.	Lizard Mound County Park
Waukesha	408 Main St., Delafield	Delafield Fish Hatchery
Waukesha	Southern Kettle Moraine State Forest, County C, Delafield.	Lapham Peak
Waukesha	Mission Road at Mill Road, west of Delafield.	Nashotah Mission
Waukesha	1101 North Genesee Street, Delafield	St. John's Northwestern Military Academy
Waukesha	Hwy 18, near Dousman	Masonic Home
Waukesha	Main Street, Lannon	Lannon Stone
Waukesha	N51 W34922 Wisconsin Ave., Okauchee	Historic Okauchee
Waukesha	Carroll College campus, Waukesha	Carroll College
Waupaca	Municipal Airport, Clintonville	Birthplace of an Airline
Waupaca	Walter Olen Park, Clintonville	Four-Wheel Drive
Waupaca	Marden Memorial Center, WI Veterans Home, King	General Charles King
Waupaca	Marden Memorial Center, WI Veterans Home, King	Grand Army Home
Waupaca	Triangle Park, Jct. of Hwy 22 with 110 and Hwy B, Manawa	Melvin O. Handrich – Medal of Honor Recipient
Waupaca	Hwy 110, 3.5 miles south of Marion	Chief Waupaca
Waushara	County J, 2 miles south of Almond	Sir Henry Wellcome
Waushara	State Hwy 49, Auroraville	The Auroraville Fountain
Waushara	6th Ave., Town of Hancock	Whistler Mound Group and Enclosure
Winnebago	9088 Clayton Avenue, Town of Menasha	Fox-Irish Cemetery
Winnebago	Menasha Hotel, Main and Mills Streets, Menasha	Wisconsin Central Railroad
Winnebago	Fritsie Park, Menasha	Butte des Morts
Winnebago	Interior walkway, 135 W. Wisconsin Ave., Neenah	Wisconsin Avenue Commercial Historic District
Winnebago	Scott Park, 515 E. Main St., Omro	Historic Omro
Winnebago	1619 Oshkosh Avenue, Oshkosh	Coles Bashford House
Winnebago	Oshkosh Public Museum, 1331 Algoma Blvd., Oshkosh	Edgar Sawyer House
Winnebago	Rainbow Park, Oshkosh	Knaggs Ferry
Winnebago	Wittman Field Airport, 20th Street Road, Oshkosh	S.J. Wittman
Winnebago	UW-Oshkosh campus, Oshkosh	University of Wisconsin-Oshkosh
Winnebago	Town of Winchester Cemetery, 1 mi. SW of Winchester	Samuel N. Rogers, Sr., American Revolutionary Soldier
Winnebago	Hwy B, west of Winneconne	Poygan Paygrounds
Wood	Wayside #4, junction of Hwys 10 and 13	Prisoners of War
Wood	West 100 Block of North Central Ave., Marshfield	Founders' Square
Wood	Riverside Park, Hwys 54 and 73, Nekoosa	Point Basse
Wood	Hwy 54, 5 miles west of Port Edwards	Cranberry Culture
Wood	Hwys 54 and 73, southern city limits of Wisconsin Rapids	Centralia Pulp and Paper Mill

Sources: State Historical Society of Wisconsin, Historical Markers Council, *A Guide to Wisconsin Historical Markers*, 1982; Division of Historic Preservation, departmental data, June 2011.

WISCONSIN VOTE IN PRESIDENTIAL ELECTIONS 1848 – 2008

Key:

A – American (Know Nothing)	LR – Liberal Republican	Soc – Socialist
AFC – America First Coalition	NA – New Alliance	SocUSA – Socialist Party USA
Cit – Citizens	Nat – National	SoD – Southern Democrat
Com – Communist	ND – National Democrat	SPW – Socialist Party of Wis.
Con – Constitution	NER – National Economic Recovery	SW – Socialist Worker
CU – Constitutional Union	NL – Natural Law	Tax – U.S. Taxpayers
D – Democrat	People's – People's (Populist)	TBL – The Better Life
ER – Independents for Economic Recovery	Pop – Populist	3rd – Third Party
FS – Free Soil	Prog – Progressive	U – Union
G – Greenback	Proh – Prohibition	UL – Union Labor
Gr – Grassroots	R – Republican	USL – U.S. Labor
Ind – Independent	Rfm – Reform	W – Whig
IP – Ind. Progressive	SD – Social Democrat	WG – Wisconsin Greens
IS – Ind. Socialist	SL – Socialist Labor	WIA – Wis. Independent Alliance
ISL – Ind. Socialist Labor	S&L – Party for Socialism and Liberation	Workers – Workers
ISW – Ind. Socialist Worker		WP – We, the People
LF – Labor–Farm/Laborista–Agrario		WW – Worker's World
Lib – Libertarian		

Note: The party designation listed for a candidate is taken from the Congressional Quarterly *Guide to U.S. Elections*. A candidate whose party did not receive 1% of the vote for a statewide office in the previous election or who failed to meet the alternative requirement of Section 5.62, Wisconsin Statutes, must be listed on the Wisconsin ballot as “independent”. In this listing, candidates whose party affiliations appear as “Ind”, followed by a party designation, were identified on the ballot simply as “independent” although they also provided a party designation or statement of principle.

Under the Electoral College system, each state is entitled to electoral votes equal in number to its total congressional delegation of U.S. Senators and U.S. Representatives.

<p>1848 (4 electoral votes)</p> <p>Lewis Cass (D) 15,001 Zachary Taylor (W) 13,747 Martin Van Buren (FS) 10,418 TOTAL 39,166</p> <p>1852 (5 electoral votes)</p> <p>Franklin Pierce (D) 33,658 Winfield Scott (W) 22,210 John P. Hale (FS) 8,814 TOTAL 64,682</p> <p>1856 (5 electoral votes)</p> <p>John C. Fremont (R) 66,090 James Buchanan (D) 52,843 Millard Fillmore (A) 579 TOTAL 119,512</p> <p>1860 (5 electoral votes)</p> <p>Abraham Lincoln (R) 86,113 Stephen A. Douglas (D) 65,021 John C. Breckinridge (SoD) 888 John Bell (CU) 161 TOTAL 152,183</p> <p>1864 (8 electoral votes)</p> <p>Abraham Lincoln (R) 83,458 George B. McClellan (D) 65,884 TOTAL 149,342</p> <p>1868 (8 electoral votes)</p> <p>Ulysses S. Grant (R) 108,857 Horatio Seymour (D) 84,707 TOTAL 193,564</p> <p>1872 (10 electoral votes)</p> <p>Ulysses S. Grant (R) 104,994 Horace Greeley (D & LR) 86,477 Charles O'Conor (D) 834 TOTAL 192,305</p> <p>1876 (10 electoral votes)</p> <p>Rutherford B. Hayes (R) 130,668 Samuel J. Tilden (D) 123,927 Peter Cooper (G) 1,509 Green Clay Smith (Proh) 27 TOTAL 256,131</p> <p>1880 (10 electoral votes)</p> <p>James A. Garfield (R) 144,398 Winfield S. Hancock (D) 114,644 James B. Weaver (G) 7,986 John W. Phelps (A) 91 Neal Dow (Proh) 68 TOTAL 267,187</p>	<p>1884 (11 electoral votes)</p> <p>James G. Blaine (R) 161,157 Grover Cleveland (D) 146,477 John P. St. John (Proh) 7,656 Benjamin F. Butler (G) 4,598 TOTAL 319,888</p> <p>1888 (11 electoral votes)</p> <p>Benjamin Harrison (R) 176,553 Grover Cleveland (D) 155,232 Clinton B. Fisk (Proh) 14,277 Alson J. Streeter (UL) 8,552 TOTAL 354,614</p> <p>1892 (12 electoral votes)</p> <p>Grover Cleveland (D) 177,325 Benjamin Harrison (R) 171,101 John Bidwell (Proh) 13,136 James B. Weaver (People's) 10,019 TOTAL 371,581</p> <p>1896 (12 electoral votes)</p> <p>William McKinley (R) 268,135 William J. Bryan (D) 165,523 Joshua Levering (Proh) 7,507 John M. Palmer (ND) 4,584 Charles H. Matchett (SL) 1,314 Charles E. Bentley (Nat) 346 TOTAL 447,409</p> <p>1900 (12 electoral votes)</p> <p>William McKinley (R) 265,760 William J. Bryan (D) 159,163 John G. Woolley (Proh) 10,027 Eugene V. Debs (SD) 7,048 Joseph F. Malloney (SL) 503 TOTAL 442,501</p> <p>1904 (13 electoral votes)</p> <p>Theodore Roosevelt (R) 280,164 Alton B. Parker (D) 124,107 Eugene V. Debs (SD) 28,220 Silas C. Swallow (Proh) 9,770 Thomas E. Watson (People's) 530 Charles H. Corregan (SL) 223 TOTAL 443,014</p> <p>1908 (13 electoral votes)</p> <p>William H. Taft (R) 247,747 William J. Bryan (D) 166,632 Eugene V. Debs (SD) 28,164 Eugene W. Chafin (Proh) 11,564 August Gillhaus (SL) 314 TOTAL 454,421</p>
---	---

WISCONSIN VOTE IN PRESIDENTIAL ELECTIONS 1848 – 2008—Continued

1912 (13 electoral votes)		1948 (12 electoral votes)	
Woodrow Wilson (D)	164,230	Harry S Truman (D)	647,310
William H. Taft (R)	130,596	Thomas Dewey (R)	590,959
Theodore Roosevelt (Prog)	62,448	Henry Wallace (PP)	25,282
Eugene V. Debs (SD)	33,476	Norman Thomas (Soc)	12,547
Eugene W. Chafin (Proh)	8,584	Edward Teichert (Ind)	399
Arthur E. Reimer (SL)	632	Farrell Dobbs (ISW)	303
TOTAL	399,966	TOTAL	1,276,800
1916 (13 electoral votes)		1952 (12 electoral votes)	
Charles E. Hughes (R)	220,822	Dwight D. Eisenhower (R)	979,744
Woodrow Wilson (D)	191,363	Adlai E. Stevenson (D)	622,175
Allan Benson (Soc)	27,631	Vincent Hallinan (IP)	2,174
J. Frank Hanly (Proh)	7,318	Farrell Dobbs (ISW)	1,350
TOTAL	447,134	Darlington Hoopes (IS)	1,157
1920 (13 electoral votes)		Eric Hass (ISL)	
Warren G. Harding (R)	498,576	TOTAL	1,607,370
James M. Cox (D)	113,422	1956 (12 electoral votes)	
Eugene V. Debs (Soc)	80,635	Dwight D. Eisenhower (R)	954,844
Aaron S. Watkins (Proh)	8,647	Adlai E. Stevenson (D)	586,768
TOTAL	701,280	T. Coleman Andrews (Ind Con)	6,918
1924 (13 electoral votes)		Darlington Hoopes (Ind Soc)	
Robert M. La Follette (Prog)	453,678	Eric Hass (Ind SL)	710
Calvin Coolidge (R)	311,614	Farrell Dobbs (Ind SW)	564
John W. Davis (D)	68,096	TOTAL	1,550,558
William Z. Foster (Workers)	3,834	1960 (12 electoral votes)	
Herman P. Faris (Proh)	2,918	Richard M. Nixon (R)	895,175
TOTAL	840,140	John F. Kennedy (D)	830,805
1928 (13 electoral votes)		Farrell Dobbs (Ind SW)	
Herbert Hoover (R)	544,205	Eric Hass (Ind SL)	1,310
Alfred E. Smith (D)	450,259	TOTAL	1,729,082
Norman Thomas (Soc)	18,213	1964 (12 electoral votes)	
William F. Varney (Proh)	2,245	Lyndon B. Johnson (D)	1,050,424
William Z. Foster (Workers)	1,528	Barry M. Goldwater (R)	638,495
Verne L. Reynolds (SL)	381	Clifton DeBerry (Ind SW)	1,692
TOTAL	1,016,831	Eric Hass (Ind SL)	1,204
1932 (12 electoral votes)		TOTAL	
Franklin D. Roosevelt (D)	707,410	1,691,815	
Herbert Hoover (R)	347,741	1968 (12 electoral votes)	
Norman Thomas (Soc)	53,379	Richard M. Nixon (R)	809,997
William Z. Foster (Com)	3,112	Hubert H. Humphrey (D)	748,804
William D. Uphaw (Proh)	2,672	George C. Wallace (Ind A)	127,835
Verne L. Reynolds (SL)	494	Henning A. Blomen (Ind SL)	1,338
TOTAL	1,114,808	Frederick W. Halstead (Ind SW)	1,222
1936 (12 electoral votes)		TOTAL	
Franklin D. Roosevelt (D)	802,984	1,689,196	
Alfred M. Landon (R)	380,828	1972 (11 electoral votes)	
William Lemke (U)	60,297	Richard M. Nixon (R)	989,430
Norman Thomas (Soc)	10,626	George S. McGovern (D)	810,174
Earl Browder (Com)	2,197	John G. Schmitz (A)	47,525
David L. Calvin (Proh)	1,071	Benjamin M. Spock (Ind Pop)	2,701
John W. Aiken (SL)	557	Louis Fisher (Ind SL)	998
TOTAL	1,258,560	Gus Hall (Ind Com)	663
1940 (12 electoral votes)		Evelyn Reed (Ind SW)	
Franklin D. Roosevelt (D)	704,821	TOTAL	1,851,997
Wendell Willkie (R)	679,206	1976 (11 electoral votes)	
Norman Thomas (Soc)	15,071	Jimmy Carter (D)	1,040,232
Earl Browder (Com)	2,394	Gerald R. Ford (R)	1,004,987
Roger Babson (Proh)	2,148	Eugene J. McCarthy (Ind)	34,943
John W. Aiken (SL)	1,882	Lester Maddox (A)	8,552
TOTAL	1,405,522	Frank P. Zeidler (Ind Soc)	4,298
1944 (12 electoral votes)		Roger L. MacBride (Ind Lib)	
Thomas Dewey (R)	674,532	Peter Camejo (Ind SW)	1,691
Franklin D. Roosevelt (D)	650,413	Margaret Wright (Ind Pop)	943
Norman Thomas (Soc)	13,205	Gus Hall (Ind Com)	749
Edward Teichert (Ind)	1,002	Lyndon H. LaRouche, Jr. (Ind USL)	738
TOTAL	1,339,152	Jules Levin (Ind SL)	389
		TOTAL	
		2,104,175	

WISCONSIN VOTE IN PRESIDENTIAL ELECTIONS 1848 – 2008–Continued

1980 (11 electoral votes)		1996 (11 electoral votes)	
Ronald Reagan (R)	1,088,845	Bill Clinton (D)	1,071,971
Jimmy Carter (D)	981,584	Bob Dole (R)	845,029
John Anderson (Ind)	160,657	Ross Perot (Rfm)	227,339
Ed Clark (Ind Lib)	29,135	Ralph Nader (Ind WG)	28,723
Barry Commoner (Ind Cit)	7,767	Howard Phillips (Tax)	8,811
John Rarick (Ind Con)	1,519	Harry Browne (Lib)	7,929
David McReynolds (Ind Soc)	808	John Hagelin (Ind NL)	1,379
Gus Hall (Ind Com)	772	Monica Moorehead (Ind WW)	1,333
Deidre Griswold (Ind WW)	414	Mary Cal Hollis (Ind Soc)	848
Clifton DeBerry (Ind SW)	383	James E. Harris (Ind SW)	483
TOTAL	2,273,221	TOTAL	2,196,169
1984 (11 electoral votes)		2000 (11 electoral votes)	
Ronald Reagan (R)	1,198,800	Al Gore (D)	1,242,987
Walter F. Mondale (D)	995,847	George W. Bush (R)	1,237,279
David Bergland (Lib)	4,884	Ralph Nader (WG)	94,070
Bob Richards (Con)	3,864	Pat Buchanan (Ind Rfm)	11,446
Lyndon H. LaRouche, Jr. (Ind)	3,791	Harry Browne (Lib)	6,640
Sonia Johnson (Ind Cit)	1,456	Howard Phillips (Con)	2,042
Dennis L. Serrette (Ind WIA)	1,007	Monica G. Moorehead (Ind WW)	1,063
Larry Holmes (Ind WW)	619	John Hagelin (Ind Rfm)	878
Gus Hall (Ind Com)	597	James Harris (Ind SW)	306
Melvin T. Mason (Ind SW)	445	TOTAL	2,598,607
TOTAL	2,212,018	2004 (10 electoral votes)	
1988 (11 electoral votes)		John F. Kerry (D)	1,489,504
Michael S. Dukakis (D)	1,126,794	George W. Bush (R)	1,478,120
George Bush (R)	1,047,499	Ralph Nader (Ind TBL)	16,390
Ronald Paul (Ind Lib)	5,157	Michael Badnarik (Lib)	6,464
David E. Duke (Ind Pop)	3,056	David Cobb (WG)	2,661
James Warren (Ind SW)	2,574	Walter F. Brown (Ind SPW)	471
Lyndon H. LaRouche, Jr. (Ind NER)	2,302	James Harris (Ind SW)	411
Lenora B. Fulani (Ind NA)	1,953	TOTAL	2,997,007
TOTAL	2,191,612	2008 (10 electoral votes)	
1992 (11 electoral votes)		Barack Obama (D)	1,677,211
Bill Clinton (D)	1,041,066	John McCain (R)	1,262,393
George Bush (R)	930,855	Ralph Nader (Ind)	17,605
Ross Perot (Ind)	544,479	Bob Barr (Lib)	8,858
Andre Marrou (Lib)	2,877	Chuck Baldwin (Ind Con)	5,072
James Gritz (Ind AFC)	2,311	Cynthia McKinney (WG)	4,216
Ron Daniels (LF)	1,883	Jeffrey J. Wamboldt (Ind WtP)	764
Howard Phillips (Ind Tax)	1,772	Brian Moore (Ind Soc USA)	540
J. Quinn Brisben (Ind Soc)	1,211	Gloria LaRiva (Ind S&L)	237
John Hagelin (NL)	1,070	TOTAL	2,983,417
Lenora B. Fulani (Ind NA)	654		
Lyndon H. LaRouche, Jr. (Ind ER)	633		
Jack Herer (Ind Gr)	547		
Eugene A. Hem (3rd)	405		
James Warren (Ind SW)	390		
TOTAL	2,531,114		

Note: Some totals include scattered votes for other candidates.

Sources: Official records of the Government Accountability Board, Elections Division and Congressional Quarterly, *Guide to U.S. Elections*, 1994.

VOTE FOR GOVERNOR IN GENERAL ELECTIONS
1848 – 2010

Key:

A – American	IPR – Independent Prohibition Republic	Prog – Progressive
C – Conservative	ISL – Independent Socialist Labor	Proh – Prohibition
Com – Communist	ISW – Independent Socialist Worker	R – Republican
Con – Constitution	IW – Independent Worker	Soc – Socialist
D – Democrat	L – Labor	SD – Social Democrat
DS – Democratic Socialist	LF – Labor-Farm/Laborista-Agrario	SDA – Social Democrat of America
G – Greenback	Lib – Libertarian	SL – Socialist Labor
Ind – Independent	Nat – National	SW – Socialist Worker
IC – Independent Communist	NR – National Republic	Tax – U.S. Taxpayers
ID – Independent Democrat	People’s – People’s (Populist)	U – Union
IL – Independent Labor	PLS – Progressive Labor Socialist	UL – Union Labor
IP – Independent Prohibition	PP – People’s Progressive	W – Whig

Note: A candidate whose party did not receive 1% of the vote for a statewide office in the previous election or who failed to meet the alternative requirement of Section 5.62, Wisconsin Statutes, is listed on the Wisconsin ballot as “independent”. When a candidate’s party affiliation is listed as “independent” and a party designation is shown in italics, “independent” was the official ballot listing, but a party designation was found by the Wisconsin Legislative Reference Bureau in newspaper reports.

1848		1877	
Nelson Dewey (D) ¹	19,875	William E. Smith (R)	78,759
John Hubbard Tweedy (W) ¹	14,621	James A. Mallory (D)	70,486
Charles Durkee (Ind) ¹	1,134	Edward Phelps Allis (G)	26,216
TOTAL	35,309	Collin M. Campbell (Soc)	2,176
1849		1879	
Nelson Dewey (D)	16,649	William E. Smith (R)	100,535
Alexander L. Collins (W)	11,317	James G. Jenkins (D)	75,030
Warren Chase (Ind)	3,761	Reuben May (G)	12,996
TOTAL	31,759	TOTAL	189,005
1851		1881	
Leonard James Farwell (W)	22,319	Jeremiah McLain Rusk (R)	81,754
Don Alonzo Joshua Upham (D)	21,812	N.D. Fratt (D)	69,797
TOTAL	44,190	T.D. Kanouse (Proh)	13,225
1853		1884	
William Augustus Barstow (D)	30,405	Edward Phelps Allis (G)	7,002
Edward Dwight Holton (R)	21,886	TOTAL	171,856
Henry Samuel Baird (W)	3,304	1884	
TOTAL	55,683	Jeremiah McLain Rusk (R)	163,214
1855		1886	
William Augustus Barstow (D) ²	36,355	N.D. Fratt (D)	143,945
Coles Bashford (R)	36,198	Samuel Dexter Hastings (Proh)	8,545
TOTAL	72,598	William L. Utley (G)	4,274
1857		1887	
Alexander William Randall (R)	44,693	Jeremiah McLain Rusk (R)	133,247
James B. Cross (D)	44,239	Gilbert Motier Woodward (D)	114,529
TOTAL	90,058	John Cochrane (People’s)	21,467
1859		1888	
Alexander William Randall (R)	59,999	William Dempster Hoard (R)	175,696
Harrison Carroll Hobart (D)	52,539	James Morgan (D)	155,423
TOTAL	112,755	E.G. Durant (Proh)	14,373
1861		1890	
Louis Powell Harvey (R)	53,777	D. Frank Powell (L)	9,196
Benjamin Ferguson (D)	45,456	TOTAL	354,714
TOTAL	99,258	1890	
1863		1891	
James Taylor Lewis (R)	72,717	George Wilbur Peck (D)	160,388
Henry L. Palmer (D)	49,053	William Dempster Hoard (R)	132,068
TOTAL	122,029	Charles Alexander (Proh)	11,246
1865		1892	
Lucius Fairchild (R)	58,332	Reuben May (UL)	5,447
Harrison Carroll Hobart (D)	48,330	TOTAL	309,254
TOTAL	106,674	1892	
1867		1893	
Lucius Fairchild (R)	73,637	George Wilbur Peck (D)	178,095
John J. Tallmadge (D)	68,873	John Coit Spooner (R)	170,497
TOTAL	142,522	Thomas C. Richmond (Proh)	13,185
1869		1894	
Lucius Fairchild (R)	69,502	C.M. Butt (People’s)	9,638
Charles D. Robinson (D)	61,239	TOTAL	371,559
TOTAL	130,781	1894	
1871		1896	
Cadwallader Colden Washburn (R)	78,301	William H. Upham (R)	196,150
James Rood Doolittle (D)	68,910	George Wilbur Peck (D)	142,250
TOTAL	147,274	D. Frank Powell (People’s)	25,604
1873		1896	
William Robert Taylor (D)	81,599	John F. Cleghorn (Proh)	11,240
Cadwallader Colden Washburn (R)	66,224	TOTAL	375,449
TOTAL	147,856	1896	
1875		1896	
Harrison Ludington (R)	85,155	Edward Scofield (R)	264,981
William Robert Taylor (D)	84,314	Willis C. Silverthorn (D)	169,257
TOTAL	170,070	Joshua H. Berkey (Proh)	8,140
		Christ Tuttop (SL)	1,306
		Robert Henderson (Nat)	407
		TOTAL	444,110

**VOTE FOR GOVERNOR IN GENERAL ELECTIONS
1848 – 2010–Continued**

1898		1922	
Edward Scofield (R)	173,137	John James Blaine (R)	367,929
Hiram Wilson Sawyer (D)	135,353	Arthur A. Bentley (ID)	51,061
Albinus A. Worsley (People's)	8,518	Louis A. Arnold (Soc)	39,570
Eugene Wilder Chafin (Proh)	8,078	M.L. Welles (Proh)	21,438
Howard Tuttle (SDA)	2,544	Arthur A. Dietrich (ISL)	1,444
Henry Riese (SL)	1,473	TOTAL	481,828
TOTAL	329,430	1924	
1900		John James Blaine (R)	412,255
Robert Marion La Follette (R)	264,419	Martin L. Lueck (D)	317,550
Louis G. Bomrich (D)	160,674	William F. Quick (Soc)	45,268
J. Burritt Smith (Proh)	9,707	Adolph R. Bucknam (Proh)	11,516
Howard Tuttle (SD)	6,590	Severi Alanne (IW)	4,107
Frank R. Wilke (SL)	509	Farrand K. Shuttleworth (IPR)	4,079
TOTAL	441,900	Jose Snover (SL)	1,452
1902		TOTAL	796,432
Robert Marion La Follette (R)	193,417	1926	
David Stuart Rose (D)	145,818	Fred R. Zimmerman (R)	350,927
Emil Seidel (SD)	15,970	Charles Perry (Ind)	76,507
Edwin W. Drake (Proh)	9,647	Virgil H. Cady (D)	72,627
Henry E.D. Puck (SL)	791	Herman O. Kent (Soc)	40,293
TOTAL	365,676	David W. Emerson (Proh)	7,333
1904		Alex Gordon (SL)	4,593
Robert Marion La Follette (R)	227,253	TOTAL	552,912
George Wilbur Peck (D)	176,301	1928	
William A. Arnold (SD)	24,857	Walter Jodok Kohler, Sr. (R)	547,738
Edward Scofield (NR)	12,136	Albert George Schmedeman (D)	394,368
William H. Clark (Proh)	8,764	Otto R. Hauser (Soc)	36,924
Charles M. Minkley (SL)	249	Adolph R. Bucknam (Proh)	6,477
TOTAL	449,570	Joseph Ehrhardt (IL)	1,938
1906		Alvar J. Hayes (IW)	1,420
James O. Davidson (R)	183,558	TOTAL	989,143
John A. Aylward (D)	103,311	1930	
Winfield R. Gaylord (SD)	24,437	Philip Fox La Follette (R)	392,958
Ephraim L. Eaton (Proh)	8,211	Charles E. Hammersley (D)	170,020
Ole T. Rosaas (SL)	455	Frank B. Metcalfe (Soc)	25,607
TOTAL	320,003	Alfred B. Taynton (Proh)	14,818
1908		Fred Bassett Blair (IC)	2,998
James O. Davidson (R)	242,935	TOTAL	606,825
John A. Aylward (D)	165,977	1932	
H.D. Brown (SD)	28,583	Albert George Schmedeman (D)	590,114
Winfred D. Cox (Proh)	11,760	Walter Jodok Kohler, Sr. (R)	470,805
Herman Bottema (SL)	393	Frank B. Metcalfe (Soc)	56,965
TOTAL	449,656	William C. Dean (Proh)	3,148
1910		Fred Bassett Blair (Com)	2,926
Francis Edward McGovern (R)	161,619	Joe Ehrhardt (SL)	398
Adolph H. Schmitz (D)	110,442	TOTAL	1,124,502
William A. Jacobs (SD)	39,547	1934	
Byron E. Van Keuren (Proh)	7,450	Philip Fox La Follette (Prog)	373,093
Fred G. Kremer (SL)	430	Albert George Schmedeman (D)	359,467
TOTAL	319,522	Howard Greene (R)	172,980
1912		George A. Nelson (Soc)	44,589
Francis Edward McGovern (R)	179,360	Morris Childs (IC)	2,454
John C. Karel (D)	167,316	Thomas W. North (PR)	857
Carl D. Thompson (SD)	34,468	Joe Ehrhardt (ISL)	332
Charles Lewis Hill (Proh)	9,433	TOTAL	953,797
William H. Curtis (SL)	3,253	1936	
TOTAL	393,849	Philip Fox La Follette (Prog)	573,724
1914		Alexander Wiley (R)	363,973
Emanuel Lorenz Philipp (R)	140,787	Arthur W. Lueck (D)	268,530
John C. Karel (D)	119,509	Joseph E. Walsh (U)	27,934
John James Blaine (Ind)	32,560	Joseph Ehrhardt (SL)	1,738
Oscar Ameringer (SD)	25,917	August F. Fehlandt (Proh)	1,008
David W. Emerson (Proh)	6,279	TOTAL	1,237,095
John Vierthaler (Ind)	352	1938	
TOTAL	325,430	Julius Peter Heil (R)	543,675
1916		Philip Fox La Follette (Prog)	353,381
Emanuel Lorenz Philipp (R)	229,889	Harry Wilbur Bolens (D)	78,446
Burt Williams (D)	164,555	Frank W. Smith (U)	4,564
Rae Weaver (Soc)	30,649	John Schleier, Jr. (ISL)	1,459
George McKerrow (Proh)	9,193	TOTAL	981,560
TOTAL	434,340	1940	
1918		Julius Peter Heil (R)	558,678
Emanuel Lorenz Philipp (R)	155,799	Orland Steen Loomis (Prog)	546,436
Henry A. Moehlenpah (D)	112,576	Francis Edward McGovern (D)	264,985
Emil Seidel (SD)	57,523	Fred Bassett Blair (Com)	2,340
William C. Dean (Proh)	5,296	Louis Fisher (SL)	1,158
TOTAL	331,582	TOTAL	1,373,754
1920		1942	
John James Blaine (R)	366,247	Orland Steen Loomis (Prog)	397,664
Robert McCoy (D)	247,746	Julius Peter Heil (R)	291,945
William Coleman (Soc)	71,126	William C. Sullivan (D)	98,153
Henry H. Tubbs (Proh)	6,047	Frank P. Zeidler (Soc)	11,295
TOTAL	691,294	Fred Bassett Blair (IC)	1,092
		Georgia Cozzini (ISL)	490
		TOTAL	800,985

VOTE FOR GOVERNOR IN GENERAL ELECTIONS 1848 – 2010–Continued

1944		1974	
Walter Samuel Goodland (R)	697,740	Patrick J. Lucey (D)	628,639
Daniel W. Hoan (D)	536,357	William D. Dyke (R)	497,189
Alexander O. Benz (Prog)	76,028	William H. Upham (A)	33,528
George A. Nelson (Soc)	9,183	Crazy Jim ³ (Ind)	12,107
Georgia Cozzini (Ind– <i>ISL</i>)	1,122	William Hart (Ind– <i>DS</i>)	5,113
TOTAL	1,320,483	Fred Blair (Ind– <i>C</i>)	3,617
1946		Georgia Cozzini (Ind– <i>SL</i>)	1,492
Walter Samuel Goodland (R)	621,970	TOTAL	1,181,685
Daniel W. Hoan (D)	406,499	1978	
Walter H. Uphoff (Soc)	8,996	Lee Sherman Dreyfus (R)	816,056
Sigmund G. Eisenscher (IC)	1,857	Martin J. Schreiber (D)	673,813
Jerry R. Kenyon (ISL)	959	Eugene R. Zimmerman (C)	6,355
TOTAL	1,040,444	John C. Doherty (Ind)	2,183
1948		Adrienne Kaplan (Ind– <i>SW</i>)	1,548
Oscar Rennebohm (R)	684,839	Henry A. Ochsner (Ind– <i>SL</i>)	849
Carl W. Thompson (D)	558,497	TOTAL	1,500,996
Henry J. Berquist (PP)	12,928	1982	
Walter H. Uphoff (Soc)	9,149	Anthony S. Earl (D)	896,872
James E. Boulton (ISW)	356	Terry J. Kohler (R)	662,738
Georgia Cozzini (ISL)	328	Larry Smiley (Lib)	9,734
TOTAL	1,266,139	James P. Wickstrom (Con)	7,721
1950		Peter Seidman (Ind– <i>SW</i>)	3,025
Walter Jodok Kohler, Jr. (R)	605,649	TOTAL	1,580,344
Carl W. Thompson (D)	525,319	1986	
M. Michael Essin (PP)	3,735	Tommy G. Thompson (R)	805,090
William O. Hart (Soc)	3,384	Anthony S. Earl (D)	705,578
TOTAL	1,138,148	Kathryn A. Christensen (LF)	10,323
1952		Darold E. Wall (Ind)	3,913
Walter Jodok Kohler, Jr. (R)	1,009,171	Sanford Knapp (Ind)	1,668
William Proxmire (D)	601,844	TOTAL	1,526,573
M. Michael Essin (Ind)	3,706	1990	
TOTAL	1,615,214	Tommy G. Thompson (R)	802,321
1954		Thomas A. Loftus (D)	576,280
Walter Jodok Kohler, Jr. (R)	596,158	TOTAL	1,379,727
William Proxmire (D)	560,747	1994	
Arthur Wepfer (Ind)	1,722	Tommy G. Thompson (R)	1,051,326
TOTAL	1,158,666	Charles J. Chvala (D)	482,850
1956		David S. Harmon (Lib)	11,639
Vernon W. Thomson (R)	808,273	Edward J. Frami (Tax)	9,188
William Proxmire (D)	749,421	Michael J. Mangan (Ind)	8,150
TOTAL	1,557,788	TOTAL	1,563,835
1958		1998	
Gaylord Anton Nelson (D)	644,296	Tommy G. Thompson (R)	1,047,716
Vernon W. Thomson (R)	556,391	Ed Garvey (D)	679,553
Wayne Leverenz (Ind)	1,485	Jim Mueller (Lib)	11,071
TOTAL	1,202,219	Edward J. Frami (Tax)	10,269
1960		Mike Mangan (Ind)	4,985
Gaylord Anton Nelson (D)	890,868	A–Ja–mu Muhammad (Ind)	1,604
Philip G. Kuehn (R)	837,123	Jeffrey L. Smith (WG)	14
TOTAL	1,728,009	TOTAL	1,756,014
1962		2002	
John W. Reynolds (D)	637,491	Jim Doyle (D)	800,515
Philip G. Kuehn (R)	625,536	Scott McCallum (R)	734,779
Adolf Wiggert (Ind)	2,477	Ed Thompson (Lib)	185,455
TOTAL	1,265,900	Jim Young (WG)	44,111
1964		Alan D. Eisenberg (Ind)	2,847
Warren P. Knowles (R)	856,779	Ty A. Bollerud (Ind)	2,637
John W. Reynolds (D)	837,901	Mike Mangan (Ind)	1,710
TOTAL	1,694,887	Aneb Jah Rasta Sensas–Utcha Nefer–I (Ind)	929
1966		TOTAL	1,775,349
Warren P. Knowles (R)	626,041	2006	
Patrick J. Lucey (D)	539,258	Jim Doyle (D)	1,139,115
Adolf Wiggert (Ind)	4,745	Mark Green (R)	979,427
TOTAL	1,170,173	Nelson Eisman (WG)	40,709
1968		TOTAL	2,161,700
Warren P. Knowles (R)	893,463	2010	
Bronson C. La Follette (D)	791,100	Scott Walker (R)	1,128,941
Adolf Wiggert (Ind)	3,225	Tom Barrett (D)	1,004,303
Robert Wilkinson (Ind)	1,813	Jim Langer (Ind)	10,608
TOTAL	1,689,738	James James (Ind)	8,273
1970		TOTAL ⁴	2,160,832
Patrick J. Lucey (D)	728,403		
Jack B. Olson (R)	602,617		
Leo James McDonald (A)	9,035		
Georgia Cozzini (Ind– <i>SL</i>)	1,287		
Samuel K. Hunt (Ind– <i>SW</i>)	888		
Myrtle Kastner (Ind– <i>PLS</i>)	628		
TOTAL	1,343,160		

¹Votes for Dewey and Tweedy are from *1874 Blue Book*: Durkee vote is based on county returns, as filed in the Office of the Secretary of State, but returns from Manitowoc and Winnebago Counties were missing. Without these 2 counties, Dewey had 19,605 votes and Tweedy had 14,514 votes. ²Barstow's plurality was set aside in *Atty. Gen. ex rel. Bashford v. Barstow*, 4 Wis. 567 (1855) because of irregularities in the election returns. ³Legal name. ⁴Total includes 6,780 votes for the Libertarian ticket, which had a candidate for lieutenant governor, but no candidate for governor. Source: Elections Board records. Totals include scattered votes for other candidates.

WISCONSIN GOVERNORS SINCE 1848

Governor ¹	Political Party	Service As Governor ²	Began	Ended	Born	Birthplace	Died	Burial Place
1 Nelson Dewey	Democrat	6-7-1848	1-5-1852	12-19-1813	Lepanov, Conn.	7-21-1889	Lancaster, Wis.	
2 Leonard James Farwell	Whig	1-2-1852	1-2-1854	1-5-1819	Waterbury, N.Y.	4-11-1889	Madison, Wis.	
3 William Augustus Barstow	Democrat	1-2-1854	3-21-1856	9-13-1813	Plainfield, Conn.	12-13-1865	Cleveland, Ohio	
4 Arthur MacArthur	Democrat	3-25-1856	4-4-1858	1-26-1815	Glasgow, Scotland	8-26-1896	Washington, D.C.	
5 Coles Bashford	Republican	4-4-1858	1-6-1862	1-24-1816	Punam Co., N.Y.	4-25-1878	Oakland, Cal.	
6 Alexander William Randall	Republican	1-6-1862	4-19-1862	10-31-1819	Ames, N.Y.	7-26-1872	Elmira, N.Y.	
7 Lucas Powell Harvey ³	Republican	4-19-1862	1-4-1864	7-22-1821	East Haddam, Conn.	4-19-1862	Madison, Wis.	
8 Edward Salomon ⁴	Republican	1-4-1864	1-1-1866	10-30-1819	Strobeck, Prussia	8-21-1909	Frankfurt, Germany	
9 James Taylor Lewis	Republican	1-1-1866	1-1-1872	12-27-1831	Clarendon, N.Y.	4-4-1904	Columbus, Wis.	
10 Lucius Fairchild	Republican	1-1-1872	1-5-1874	4-22-1818	Livermore, Me.	5-23-1896	Madison, Wis.	
11 Cadwallader Colden Washburn	Democrat	1-5-1874	1-7-1876	7-10-1820	Woodbury, Conn.	3-17-1899	Madison, Wis.	
12 William Ludington	Republican	1-7-1876	1-2-1878	6-38-1822	Wadingtonville, N.Y.	3-17-1899	Madison, Wis.	
13 Hannibal McMillin	Republican	1-2-1878	1-2-1880	6-17-1830	York in France, Scotland	5-13-1883	Madison, Wis.	
14 Benjamin McMillin	Republican	1-2-1880	7-1-1889	10-10-1836	Starkbridge, N.Y.	11-21-1893	Madison, Wis.	
15 William Demster Hoard	Democrat	7-1-1889	5-5-1891	9-28-1840	Henderson, N.Y.	4-16-1916	Franklin, Wis.	
16 George Wilbur Peck	Democrat	5-5-1891	4-4-1897	5-3-1841	Westminster, Mass.	7-2-1924	Marshfield, Wis.	
17 William Henry Upham	Republican	4-4-1897	1-7-1901	3-28-1842	Clearfield, Pa.	2-3-1925	Oconto, Wis.	
18 Robert Scott ⁵	Republican	1-7-1901	1-1-1906	6-14-1855	Primrose, Dane Co., Wis.	12-16-1922	Madison, Wis.	
19 Edward Marston La Follette, Sr. ⁵	Republican	1-1-1906	2-9-1911	2-10-1854	Sogn, Norway	5-16-1946	Madison, Wis.	
21 James O. Davidson ⁵	Republican	2-9-1911	4-1-1915	1-21-1866	Elkhart Lake, Wis.	6-15-1925	Milwaukee, Wis.	
22 Francis Edward McGovern	Republican	4-1-1915	3-1-1921	3-25-1861	Honey Creek, Sauk Co., Wis.	4-18-1934	Milwaukee, Wis.	
23 Emanuel Lorenz Philipp	Republican	3-1-1921	1-3-1927	5-4-1875	Wingville, Grant Co., Wis.	12-14-1954	Boscobel, Wis.	
24 John James Blaine	Republican	1-3-1927	1-5-1929	11-20-1880	Milwaukee, Wis.	8-18-1945	Milwaukee, Wis.	
25 Fred R. Zimmerman	Republican	1-5-1929	1-2-1931	3-8-1892	Sheboygan, Wis.	8-18-1945	Kohler, Wis.	
26 Walter Jodok Kohler, Sr.	Democrat	1-2-1931	1-2-1933	11-25-1864	Madison, Wis.	11-26-1946	Madison, Wis.	
27 Albert George Schneiderman	Democrat	1-2-1933	1-7-1935	5-8-1897	Madison, Wis.	8-18-1965	Madison, Wis.	
28 Philip Fox La Follette	Progressive	1-7-1935	1-2-1939	7-24-1876	Duesmond, Germany	11-30-1949	Madison, Wis.	
29 Julius Peter Heil	Republican	1-2-1939	4-4-1943	11-21-1893	Mauson, Wis.	12-7-1942	Mauston, Wis.	
30 Orland Steen Loomis ⁶	Progressive	4-4-1943	3-12-1947	12-22-1862	Sharon, Wis.	3-12-1947	Racine, Wis.	
31 Walter Samuel Goodland ^{6,7}	Republican	3-12-1947	5-25-1889	5-25-1889	Leeds, Columbia Co., Wis.	10-15-1968	Madison, Wis.	
32 Oscar Kennebohm ⁸	Republican	1-1-1951	1-1-1951	4-4-1904	Sheboygan, Wis.	3-10-1976	Kohler, Wis.	
33 Walter Jodok Kohler, Jr.	Republican	1-1-1951	1-7-1957	4-4-1904	Riechland Center, Wis.	4-2-1988	Riechland Center, Wis.	
34 Vernon Wallace Thomson	Democrat	1-7-1957	1-7-1963	6-4-1916	Clear Lake, Wis.	7-3-2005	Clear Lake, Wis.	
35 Gaylord Anton Nelson	Democrat	1-7-1963	4-4-1965	4-4-1921	Green Bay, Wis.	1-6-2002	Door County, Wis.	
36 John W. Reynolds	Democrat	4-4-1965	7-4-1971	3-19-1908	River Falls, Wis.	4-1-1993	River Falls, Wis.	
37 Warren Percy Knowles	Democrat	7-4-1971	7-1-1979	5-4-1939	La Crosse, Wis.	1-2-2008	Wautesha, Wis.	
38 Patrick Joseph Lucey	Democrat	7-1-1979	1-3-1983	6-20-1926	Milwaukee, Wis.	1-2-2008	Wautesha, Wis.	
39 Lee Sherman Dreyfus ⁸	Democrat	1-3-1983	1-5-1987	4-12-1936	Lansing, Mich.	1-2-2008	Wautesha, Wis.	
40 Anthony Scully Earl	Democrat	1-5-1987	2-1-2001	11-19-1941	Elroy, Wis.	1-2-2008	Wautesha, Wis.	
41 Tommy George Thompson ⁹	Republican	2-1-2001	1-6-2003	5-2-1950	Fond du Lac, Wis.	1-2-2008	Wautesha, Wis.	
42 Scott McCallum ⁹	Republican	1-6-2003	1-3-2011	11-23-1947	Washington, D.C.	1-2-2008	Wautesha, Wis.	
43 James Edward Doyle, Jr.	Democrat	1-3-2011	1-3-2011	11-2-1967	Colorado Springs, Colo.	1-2-2008	Wautesha, Wis.	
44 Scott Kevin Walker	Republican	1-3-2011	1-3-2011	11-2-1967	Colorado Springs, Colo.	1-2-2008	Wautesha, Wis.	

¹Includes those serving as acting governor when office is vacated. Administrations are numbered. ²Article XIII, Section 1 of the Wisconsin Constitution was amended in November 1882 so that the term of office of all state and county officers began in January of odd-numbered years, rather than January of even-numbered years. ³Served as acting governor during dispute over who won gubernatorial election.

⁴Salomon became acting governor on death of Harvey on 4/19/62. Davidson served as acting governor from La Follette's resignation until beginning the terms to which he was elected on 1/7/07. Goodland became acting governor on death of Governor-elect Loomis and served entire 1943-44 term. Kennebohm became acting governor on the death of Goodland on 3/12/47. Schneider became acting governor when Lucey resigned to become U.S. ambassador to Mexico. McCallum became governor when Thompson resigned to become U.S. Secretary of Health and Human Services.

Sources: "Wisconsin's Former Governors", 1960 *Wisconsin Blue Book*, pp. 69-206; Blue Book biographies.

WISCONSIN CONSTITUTIONAL OFFICERS, 1848 – 2011

Name	Term ¹	Residence
Governor		
(See separate table)		
Lieutenant Governors		
John E. Holmes (D)	1848-1850	Jefferson
Samuel W. Beall (D)	1850-1852	Taycheedah
Timothy Burns (D)	1852-1854	La Crosse
James T. Lewis (R)	1854-1856	Columbus
Arthur McArthur (D) ²	1856-1858	Milwaukee
Erasmus D. Campbell (D)	1858-1860	La Crosse
Butler G. Noble (R)	1860-1862	Whitewater
Edward Salomon (R) ³	1862-1864	Milwaukee
Wyman Spooner (R)	1864-1870	Elkhorn
Thaddeus C. Pound (R)	1870-1872	Chippewa Falls
Milton H. Pettit (R) ⁴	1872-3/23/73	Kenosha
Charles D. Parker (D)	1874-1878	Pleasant Valley
James M. Bingham (R)	1878-1882	Chippewa Falls
Sam S. Fifield (R)	1882-1887	Ashland
George W. Ryland (R)	1887-1891	Lancaster
Charles Jonas (D)	1891-1895	Racine
Emil Baensch (R)	1895-1899	Manitowoc
Jesse Stone (R)	1899-1903	Watertown
James O. Davidson (R) ⁵	1903-1907	Soldiers Grove
William D. Connor (R)	1907-1909	Marshfield
John Strange (R)	1909-1911	Oshkosh
Thomas Morris (R)	1911-1915	La Crosse
Edward F. Dithmar (R)	1915-1921	Baraboo
George F. Comings (R)	1921-1925	Eau Claire
Henry A. Huber (R)	1925-1933	Stoughton
Thomas J. O'Malley (D)	1933-1937	Milwaukee
Henry A. Gunderson (Prog) ⁶	1937-10/16/37	Portage
Herman L. Ekern (Prog) ⁶	5/16/1938-1939	Madison
Walter S. Goodland (R) ⁷	1939-1945	Racine
Oscar Rennebohm (R) ⁸	1945-1949	Madison
George M. Smith (R)	1949-1955	Milwaukee
Warren P. Knowles (R)	1955-1959	New Richmond
Philleo Nash (D)	1959-1961	Wisconsin Rapids
Warren P. Knowles (R)	1961-1963	New Richmond
Jack Olson (R)	1963-1965	Wisconsin Dells
Patrick J. Lucey (D)	1965-1967	Madison
Jack Olson (R)	1967-1971	Wisconsin Dells
Martin J. Schreiber (D) ⁹	1971-1979	Milwaukee
Russell A. Olson (R)	1979-1983	Randall
James T. Flynn (D)	1983-1987	West Allis
Scott McCallum (R) ¹⁰	1987-2001	Fond du Lac
Margaret A. Farrow (R) ¹⁰	2001-2003	Pewaukee
Barbara Lawton (D)	2003-2011	Green Bay
Rebecca Kleefisch (R)	2011-	Oconomowoc
Secretaries of State		
Thomas McHugh (D)	1848-1850	Delavan
William A. Barstow (D)	1850-1852	Waukesha
Charles D. Robinson (D)	1852-1854	Green Bay
Alexander T. Gray (D)	1854-1856	Janesville
David W. Jones (D)	1856-1860	Belmont
Lewis P. Harvey (R)	1860-1862	Shopiere
James T. Lewis (R)	1862-1864	Columbus
Lucius Fairchild (R)	1864-1866	Madison
Thomas S. Allen (R)	1866-1870	Mineral Point
Llywelyn Breeze (R)	1870-1874	Portage
Peter Doyle (D)	1874-1878	Prairie du Chien
Hans B. Warner (R)	1878-1882	Ellsworth
Ernst G. Timme (R)	1882-1891	Kenosha
Thomas J. Cunningham (D)	1891-1895	Chippewa Falls
Henry Casson (R)	1895-1899	Viroqua
William H. Froehlich (R)	1899-1903	Jackson
Walter L. Houser (R)	1903-1907	Mondovi
James A. Frear (R)	1907-1913	Hudson
John S. Donald (R)	1913-1917	Mt. Horeb
Merlin Hull (R)	1917-1921	Black River Falls
Elmer S. Hall (R)	1921-1923	Green Bay
Fred R. Zimmerman (R)	1923-1927	Milwaukee
Theodore Dammann (R)	1927-1935	Milwaukee
Theodore Dammann (Prog)	1935-1939	Milwaukee
Fred R. Zimmerman (R) ¹¹	1939-12/14/54	Milwaukee
Louis Allis (R) ¹¹	12/16/54-1/3/55	Milwaukee
Mrs. Glenn M. Wise (R) ¹¹	1/3/55-1957	Madison
Robert C. Zimmerman (R)	1957-1975	Madison
Douglas J. La Follette (D)	1975-1979	Kenosha
Mrs. Vel R. Phillips (D)	1979-1983	Milwaukee

WISCONSIN CONSTITUTIONAL OFFICERS, 1848 – 2011–Continued

Name	Term ¹	Residence
Douglas J. La Follette (D)	1983-	Madison
State Treasurers		
Jarius C. Fairchild (D)	1848-1852	Madison
Edward H. Janssen (D)	1852-1856	Cedarburg
Charles Kuehn (D)	1856-1858	Manitowoc
Samuel D. Hastings (R)	1858-1866	Trempealeau
William E. Smith (R)	1866-1870	Fox Lake
Henry Baetz (R)	1870-1874	Manitowoc
Ferdinand Kuehn (D)	1874-1878	Milwaukee
Richard Guenther (R)	1878-1882	Oshkosh
Edward C. McFetridge (R)	1882-1887	Beaver Dam
Henry B. Harshaw (R)	1887-1891	Oshkosh
John Hunner (D)	1891-1895	Eau Claire
Sewell A. Peterson (R)	1895-1899	Rice Lake
James O. Davidson (R)	1899-1903	Soldiers Grove
John J. Kempf (R) ¹²	1903-7/30/04	Milwaukee
Thomas M. Purtell (R) ¹²	7/30/04-1905	Cumberland
John J. Kempf (R)	1905-1907	Milwaukee
Andrew H. Dahl (R)	1907-1913	Westby
Henry Johnson (R)	1913-1923	Suring
Solomon Levitan (R)	1923-1933	Madison
Robert K. Henry (D)	1933-1937	Jefferson
Solomon Levitan (Prog)	1937-1939	Madison
John M. Smith (R) ⁴	1939-8/17/47	Shell Lake
John L. Sonderegger (R) ¹³	8/19/47-9/30/48	Madison
Clyde M. Johnston (appointed from staff) ¹³	10/1/48-1949	Madison
Warren R. Smith (R) ⁴	1949-12/4/57	Milwaukee
Mrs. Dena A. Smith (R) ¹³	12/5/57-1959	Milwaukee
Eugene M. Lamb (D)	1959-1961	Milwaukee
Mrs. Dena A. Smith (R) ⁴	1961-2/20/68	Milwaukee
Harold W. Clemens (R) ¹³	2/21/68-1971	Oconomowoc
Charles P. Smith (D)	1971-1991	Madison
Cathy S. Zeuske (R)	1991-1995	Shawano
Jack C. Voight (R)	1995-2007	Appleton
Dawn Marie Sass (D)	2007-2011	Milwaukee
Kurt W. Schuller (R)	2011-	Eden
Attorneys General		
James S. Brown (D)	1848-1850	Milwaukee
S. Park Coon (D)	1850-1852	Milwaukee
Experience Estabrook (D)	1852-1854	Geneva
George B. Smith (D)	1854-1856	Madison
William R. Smith (D)	1856-1858	Mineral Point
Gabriel Bouck (D)	1858-1860	Oshkosh
James H. Howe (R) ¹⁴	1860-1862	Green Bay
Winfield Smith (R) ¹⁴	1862-1866	Milwaukee
Charles R. Gill (R)	1866-1870	Watertown
Stephen Steele Barlow (R)	1870-1874	Dellona
Andrew Scott Sloan (R)	1874-1878	Beaver Dam
Alexander Wilson (R)	1878-1882	Mineral Point
Leander F. Frisby (R)	1882-1887	West Bend
Charles E. Estabrook (R)	1887-1891	Manitowoc
James L. O'Connor (D)	1891-1895	Madison
William H. Mylrea (R)	1895-1899	Wausau
Emmett R. Hicks (R)	1899-1903	Oshkosh
Lafayette M. Sturdevant (R)	1903-1907	Neillsville
Frank L. Gilbert (R)	1907-1911	Madison
Levi H. Bancroft (R)	1911-1913	Richland Center
Walter C. Owen (R) ¹⁵	1913-1918	Maiden Rock
Spencer Haven (R) ¹⁵	1918-1919	Hudson
John J. Blaine (R)	1919-1921	Boscobel
William J. Morgan (R)	1921-1923	Milwaukee
Herman L. Ekern (R)	1923-1927	Madison
John W. Reynolds (D)	1927-1933	Green Bay
James E. Finnegan (R)	1933-1937	Milwaukee
Orlando S. Loomis (Prog)	1937-1939	Mauston
John E. Martin (R) ¹⁶	1939-6/1/48	Madison
Grover L. Broadfoot (R) ¹⁶	6/5/48-11/12/48	Mondovi
Thomas E. Fairchild (D) ¹⁶	11/12/48-1951	Verona
Vernon W. Thomson (R)	1951-1957	Richland Center
Stewart G. Honeck (R)	1957-1959	Madison
John W. Reynolds (D)	1959-1963	Green Bay
George Thompson (R)	1963-1965	Madison
Bronson C. La Follette (D)	1965-1969	Madison
Robert W. Warren (R) ¹⁷	1969-10/8/74	Green Bay
Victor A. Miller (D) ¹⁷	10/8/74-11/25/74	St. Nazianz
Bronson C. La Follette (D) ¹⁷	11/25/74-1987	Madison
Donald J. Hanaway (R)	1987-1991	Green Bay
James E. Doyle (D)	1991-2003	Madison
Peggy A. Lautenschlager (D)	2003-2007	Fond du Lac

WISCONSIN CONSTITUTIONAL OFFICERS, 1848 – 2011–Continued

Name	Term ¹	Residence
J.B. Van Hollen (R)	2007-	Waukeage
Superintendents of Public Instruction¹⁸		
Eleazer Root	1849-1852	Waukesha
Azel P. Ladd	1852-1854	Shullsburg
Hiram A. Wright	1854-1855	Prairie du Chien
A. Constantine Barry	1855-1858	Racine
Lyman C. Draper	1858-1860	Madison
Josiah L. Pickard	1860-1864	Platteville
John G. McMynn	1864-1868	Racine
Alexander J. Craig	1868-1870	Madison
Samuel Fallows	1870-1874	Milwaukee
Edward Searing	1874-1878	Milton
William Clarke Whitford	1878-1882	Milton
Robert Graham	1882-1887	Oshkosh
Jesse B. Thayer	1887-1891	River Falls
Oliver Elwin Wells	1891-1895	Appleton
John Q. Emery	1895-1899	Albion
Lorenzo D. Harvey	1899-1903	Milwaukee
Charles P. Cary	1903-1921	Delavan
John Callahan	1921-1949	Madison
George Earl Watson	1949-1961	Wauwatosa
Angus B. Rothwell ⁹	1961-7/1/66	Manitowoc
William C. Kahl ¹⁹	7/1/66-1973	Madison
Barbara Thompson	1973-1981	Madison
Herbert J. Grover ²⁰	1981-4/9/93	Cottage Grove
John T. Benson	1993-2001	Marshall
Elizabeth Burmaster	2001-2009	Madison
Tony Evers	2009-	Madison

¹Article XIII, Section 1 of the Wisconsin Constitution was amended in 1882, to provide the terms for all partisan state officers would begin in odd-numbered, rather than even-numbered, years. The section was further amended in 1968 to change the term from 2-years to 4-years, effective with the November 1970 elections.

²Served as acting governor 3/21/1856 to 3/25/1856 during dispute over outcome of gubernatorial election.

³Became acting governor on the death of Governor Louis P. Harvey on 4/19/1862.

⁴Died in office.

⁵Became acting governor on 1/1/1906 when Robert M. La Follette, Sr., resigned to become U.S. Senator.

⁶Resigned to accept appointment to the State Tax Commission. Ekern appointed by Governor Philip La Follette to fill the unexpired term. Appointment ruled valid in *State ex rel. Martin v. Ekern*, 228 Wis. 645 (1937).

⁷Goodland reelected lieutenant governor, November 1942; became acting governor on 1/1/1943 for the term of deceased Governor-elect Orlando Loomis.

⁸Became acting governor on the death of Goodland on 3/12/1947.

⁹Became acting governor when Lucey resigned on 7/6/1977 to accept appointment as U.S. ambassador to Mexico.

¹⁰McCallum became governor on 2/1/2001 when Governor Tommy Thompson resigned to become U.S. Secretary of Health and Social Services. Farrow was appointed lieutenant governor on 5/9/2001.

¹¹Died 12/14/1954 after being elected to a new 2-year term. Allis was appointed to fill the unexpired term. Wise was appointed to fill the full 2-year term.

¹²Appointed 7/30/1904 to fill a vacancy caused by the failure of Kempf to give the required bond.

¹³Appointed.

¹⁴Resigned in October 1862 to join the Union Army. Smith was appointed 10/7/1862 to replace him.

¹⁵Resigned 1/7/1918 after being elected to the Wisconsin Supreme Court. Haven was appointed to fill the unexpired term.

¹⁶Resigned to accept appointment to the Wisconsin Supreme Court. Broadfoot was appointed to fill the unexpired term. Broadfoot resigned to accept appointment to the Wisconsin Supreme Court, and Attorney General-elect Fairchild was appointed to fill the unexpired term.

¹⁷Resigned to accept appointment as U.S. District Judge for the Eastern District of Wisconsin. Miller appointed to fill the unexpired term. Bronson La Follette was elected to a full term and Miller resigned so that La Follette could be appointed to fill the rest of Warren's unexpired term.

¹⁸Prior to 1902, the state superintendent was elected on a partisan ballot in November, and the term began the first Monday in January. A constitutional amendment moved the election to the nonpartisan April ballot and the beginning of the term to the first Monday in July beginning in July 1905.

¹⁹Resigned to accept appointment to the Coordinating Committee for Higher Education. Kahl was appointed to fill the unexpired term.

²⁰Resigned 4/9/1993. Lee Sherman Dreyfus was appointed to serve as "interim superintendent" for remainder of the unexpired term but did not officially become superintendent.

Source: Wisconsin Legislative Reference Bureau, *Wisconsin Blue Books*, various editions, and bureau records.

JUSTICES OF THE SUPREME COURT 1836 – 2011

Name	Term	Residence ¹
Judges During the Territorial Period		
Charles Dunn (Chief Justice) ²	1836-1848	
William C. Frazier	1836-1838	
David Irvin	1836-1838	
Andrew G. Miller	1836-1848	
Circuit Judges Who Served as Justices 1848-53³		
Alexander W. Stow	1848-1851 (C.J.)	Fond du Lac
Levi Hubbell	1848-1853 (C.J. 1851)	Milwaukee
Edward V. Whiton	1848-1853 (C.J. 1852-53)	Janesville
Charles H. Larrabee	1848-1853	Horicon
Mortimer M. Jackson	1848-1853	Mineral Point
Wiram Knowlton	1850-1853	Prairie du Chien
Timothy O. Howe	1851-1853	Green Bay
Justices Since 1853		
Edward V. Whiton	1853-1859 (C.J.)	Janesville
Samuel Crawford	1853-1855	New Diggings
Abram D. Smith	1853-1859	Milwaukee
Orsamus Cole	1855-1892 (C.J. 1880-92)	Potosi
Luther S. Dixon ⁴	1859-1874 (C.J.)	Portage
Byron Paine ⁴	1859-1864, 1867-71	Milwaukee
Jason Downer ⁴	1864-1867	Milwaukee
William P. Lyon ⁴	1871-1894 (C.J. 1892-94)	Racine
Edward G. Ryan ⁴	1874-1880 (C.J.)	Racine
David Taylor	1878-1891	Sheboygan
Harlow S. Orton	1878-1895 (C.J. 1894-95)	Madison
John B. Cassoday ⁴	1880-1907 (C.J. 1895-07)	Janesville
John B. Winslow ⁴	1891-1920 (C.J. 1907-20)	Racine
Silas U. Pinney	1892-1898	Madison
Alfred W. Newman	1894-1898	Trempealeau
Roujet D. Marshall ⁴	1895-1918	Chippewa Falls
Charles V. Bardeen ⁴	1898-1903	Wausau
Joshua Eric Dodge ⁴	1898-1910	Milwaukee
Robert G. Siebecke ⁵	1903-1922 (C.J. 1920-22)	Madison
James C. Kerwin	1905-1921	Neenah
William H. Timlin	1907-1916	Milwaukee
Robert M. Bashford ⁴	Jan.-June 1908	Madison
John Barnes	1908-1916	Rhineland
Aad J. Vinje ⁴	1910-1929 (C.J. 1922-29)	Superior
Marvin B. Rosenberry ⁴	1916-1950 (C.J. 1929-50)	Wausau
Franz C. Eschweiler ⁴	1916-1929	Milwaukee
Walter C. Owen	1918-1934	Maiden Rock
Burr W. Jones ⁴	1920-1926	Madison
Christian Doerfler ⁴	1921-1929	Milwaukee
Charles H. Crownhart ⁴	1922-1930	Madison
E. Ray Stevens	1926-1930	Madison
Chester A. Fowler ⁴	1929-1948	Fond du Lac
Oscar M. Fritz ²	1929-1954 (C.J. 1950-54)	Milwaukee
Edward T. Fairchild ⁴	1929-1957 (C.J. 1954-57)	Milwaukee
John D. Wickchem ⁴	1930-1949	Madison
George B. Nelson ⁴	1930-1942	Stevens Point
Theodore G. Lewis ⁴	Nov. 15-Dec. 5, 1934	Madison
Joseph Martin ⁴	1934-1946	Green Bay
Elmer E. Barlow ⁴	1942-1948	Arcadia
James Ward Rector ⁴	1946-1947	Madison
Henry P. Hughes	1948-1951	Oshkosh
John E. Martin ⁴	1948-1962 (C.J. 1957-62)	Green Bay
Grover L. Broadfoot ⁴	1948-1962 (C.J. Jan.-May 1962)	Mondovi
Timothy Brown ⁴	1949-1964 (C.J. 1962-64)	Madison
Edward J. Gehl	1950-1956	Hartford
George R. Currie ⁴	1951-1968 (C.J. 1964-68)	Sheboygan
Roland J. Steidle ⁴	1954-1958	Milwaukee
Emmert L. Wingert ⁴	1956-1959	Madison
Thomas E. Fairchild	1957-1966	Verona
E. Harold Hallows ⁴	1958-1974 (C.J. 1968-74)	Milwaukee
William H. Dieterich	1959-1964	Milwaukee
Myron L. Gordon	1962-1967	Milwaukee
Horace W. Wilkie ⁴	1962-1976 (C.J. 1974-76)	Madison
Bruce F. Beilfuss	1964-1983 (C.J. 1976-83)	Neillsville
Nathan S. Heffernan ⁴	1964-1995 (C.J. 1983-95)	Sheboygan
Leo B. Hanley ⁴	1966-1978	Milwaukee
Connor T. Hansen ⁴	1967-1980	Eau Claire
Robert W. Hansen	1968-1978	Milwaukee
Roland B. Day ⁴	1974-1996 (C.J. 1995-96)	Madison

JUSTICES OF THE SUPREME COURT 1836 – 2011–Continued

Name	Term	Residence ¹
Shirley S. Abrahamson ⁴	1976- (C.J. 1996-)	Madison
William G. Callow	1978-1992	Waukesha
John L. Coffey	1978-1982	Milwaukee
Donald W. Steinmetz	1980-1999	Milwaukee
Louis J. Ceci ⁴	1982-1993	Milwaukee
William A. Bablitch	1983-2003	Stevens Point
Jon P. Wilcox ⁴	1992-2007	Wautoma
Janine P. Geske ⁴	1993-1998	Milwaukee
Ann Walsh Bradley	1995-	Wausau
N. Patrick Crooks	1996-	Green Bay
David T. Prosser, Jr. ⁴	1998-	Appleton
Diane S. Sykes ⁴	1999-2004	Milwaukee
Patience D. Roggensack	2003-	Madison
Louis B. Butler, Jr. ⁴	2004-2008	Milwaukee
Annette K. Ziegler	2007-	West Bend
Michael J. Gableman	2008-	Webster

Note: The structure of the Wisconsin Supreme Court has varied. There were 3 justices during the territorial period. From 1848 to 1853, circuit judges acted as supreme court judges (5 from 1848 to 1850 and 6 from 1850 to 1853). From 1853 to 1877, there were 3 elected justices. The number was increased to 5 by constitutional amendment in 1877. In 1903 the constitution was amended to raise the number to 7.

¹Home address is the municipality from which the justice was originally appointed or elected.

²As a result of a constitutional amendment adopted in April 1889, the most senior justice serves as chief justice. Previously, the chief justice was elected or appointed to that position.

³Circuit judges acted as Supreme Court justices 1848-1853.

⁴Initially appointed to the court.

⁵Siebeck was elected April 7, 1903, but prior to inauguration for his elected term was appointed April 9, 1903, to fill the vacancy caused by the death of Justice Bardeen.

Sources: Wisconsin Legislative Reference Bureau, *Wisconsin Blue Books*, 1935, 1944, 1977; Government Accountability Board, Elections Division records; Wisconsin Supreme Court, *Wisconsin Reports*, various volumes.

SENATE PRESIDENTS PRO TEMPORE, SENATE PRESIDENTS AND ASSEMBLY SPEAKERS, 1848 – 2011

Legislative Session	Senate Presidents Pro Tempore or Presidents ¹	Residence	Assembly Speakers	Residence
1848No permanent president pro tempore	—	Ninian E. Whiteside (D)	Lafayette County
1849No permanent president pro tempore	—	Harrison C. Hobart (D)	Sheboygan
1850No record	—	Moses M. Strong (D)	Mineral Point
1851No record	—	Frederick W. Horn (D)	Cedarburg
1852E.B. Dean, Jr. (D)	Madison	James M. Shafter (W)	Sheboygan
1853Duncan C. Reed (D)	Milwaukee	Henry L. Palmer (D)	Milwaukee
1854Benjamin Allen (D)	Hudson	Frederick W. Horn (D)	Cedarburg
1855Elezor Wakeley (D)	Whitewater	Charles C. Sholes (R)	Kenosha
1856Louis Powell Harvey (R)	Shopiere	William Hull (D)	Grant County
1857No permanent president pro tempore	—	Wyman Spooner (R)	Elkhorn
1858Hiram H. Giles (R)	Stoughton	Frederick S. Lovell (R)	Kenosha County
1859Dennison Worthington (R)	Summit	William P. Lyon (R)	Racine
1860Moses M. Davis (R)	Portage	William P. Lyon (R)	Racine
1861Alden I. Bennett (R)	Beloit	Amasa Cobb (R)	Mineral Point
1862Frederick O. Thorp (D)	West Bend	James W. Beardsley (UD)	Prescott
1863Wyman Spooner (R)	Elkhorn	J. Allen Barber (R)	Lancaster
1864Smith S. Wilkinson (R)	Prairie du Sac	William W. Field (U)	Fennimore
1865Willard H. Chandler (U)	Windsor	William W. Field (U)	Fennimore
1866Willard H. Chandler (U)	Windsor	Henry D. Barron (U)	St. Croix Falls
1867George F. Wheeler (U)	Nanuapa	Angus Cameron (U)	La Crosse
1868Newton M. Littlejohn (R)	Whitewater	Alexander M. Thomson (R)	Janesville
1869George C. Hazelton (R)	Boscobel	Alexander M. Thomson (R)	Janesville
1870David Taylor (R)	Sheboygan	James M. Bingham (R)	Palmyra
1871Charles G. Williams (R)	Janesville	William E. Smith (R)	Fox Lake
1872Charles G. Williams (R)	Janesville	Daniel Hall (R)	Watertown
1873Henry L. Eaton (R)	Lone Rock	Henry D. Barron (R)	St. Croix Falls
1874John C. Holloway (R)	Lancaster	Gabriel Bouck (D)	Oshkosh
1875Henry D. Barron (R)	St. Croix Falls	Frederick W. Horn (R)	Cedarburg
1876Robert L.D. Potter (R)	Wautoma	Sam S. Fifield (R)	Ashland
1877William H. Hiner (R)	Fond du Lac	John B. Cassoday (R)	Janesville
1878Levi W. Barden (R)	Portage	Augustus R. Barrows (GB)	Chippewa Falls
1879William T. Price (R)	Black River Falls	David M. Kelly (R)	Green Bay
1880Thomas B. Scott (R)	Grand Rapids	Alexander A. Arnold (R)	Galesville
1881Thomas B. Scott (R)	Grand Rapids	Ira B. Bradford (R)	Augusta
1882George B. Burrows (R)	Madison	Franklin L. Gilson (R)	Ellsworth
1883George W. Ryland (R)	Lancaster	Earl P. Finch (D)	Oshkosh
1885Edward S. Minor (R)	Sturgeon Bay	Hiram O. Fairchild (R)	Marinette
1887Charles K. Erwin (R)	Tomah	Thomas B. Mills (R)	Millston
1889Thomas A. Dyson (R)	La Crosse	Thomas B. Mills (R)	Millston
1891Frederick W. Horn (D)	Cedarburg	James J. Hogan (D)	La Crosse
1893Robert J. MacBride (D)	Neillsville	Edward Keogh (D)	Milwaukee
1895Thompson D. Weeks (R)	Whitewater	George B. Burrows (R)	Madison
1897Lyman W. Thayer (R)	Ripon	George A. Buckstaff (R)	Oshkosh
1899Lyman W. Thayer (R)	Ripon	George H. Ray (R)	La Crosse
1901James J. McGillivray (R)	Black River Falls	George H. Ray (R)	La Crosse
1903-05James J. McGillivray (R)	Black River Falls	Irvine L. Lenroot (R)	West Superior
1907James H. Stout (R)	Menomonie	Herman L. Ekern (R)	Whitehall
1909James H. Stout (R)	Menomonie	Levi H. Bancroft (R)	Richland Center
1911Harry C. Martin (R)	Darlington	C.A. Ingram (R)	Durand
1913Harry C. Martin (R)	Darlington	Merlin Hull (R)	Black River Falls
1915Edward T. Fairchild (R)	Milwaukee	Lawrence C. Whittet (R)	Edgerton
1917Timothy Burke (R)	Green Bay	Lawrence C. Whittet (R)	Edgerton
1919Willard T. Stevens (R)	Rhineland	Riley S. Young (R)	Darien
1921Timothy Burke (R)	Green Bay	Riley S. Young (R)	Darien
1923Henry A. Huber (R)	Stoughton	John L. Dahl (R)	Rice Lake
1925Howard Teasdale (R)	Sparta	Herman Sachtjen (R) ²	Madison
	.Howard Teasdale (R)	Sparta	George A. Nelson (R) ²	Milltown
1927William L. Smith (R)	Neillsville	John W. Eber (R)	Milwaukee
1929Oscar H. Morris (R)	Milwaukee	Charles B. Perry (R)	Wauwatosa
1931Herman J. Severson (P)	Iola	Charles B. Perry (R)	Wauwatosa
1933Orland S. Loomis (R)	Mauston	Cornelius T. Young (D)	Milwaukee
1935Harry W. Bolens (D)	Port Washington	Jorge W. Carow (P)	Ladysmith
1937Walter J. Rush (P)	Neillsville	Paul R. Alfonsi (P)	Pence
1939Edward J. Roethel (R)	Fennimore	Vernon W. Thomson (R)	Richland Center
1941-43Conrad Shearer (R)	Kenosha	Vernon W. Thomson (R)	Richland Center
1945Conrad Shearer (R)	Kenosha	Donald C. McDowell (R)	Soldiers Grove

SENATE PRESIDENTS PRO TEMPORE, SENATE PRESIDENTS AND ASSEMBLY SPEAKERS, 1848 – 2011–Continued

Legislative Session	Senate Presidents Pro Tempore or Presidents ¹	Residence	Assembly Speakers	Residence
1947Frank E. Panzer (R)	Brownsville	Donald C. McDowell (R)	Soldiers Grove
1949Frank E. Panzer (R)	Brownsville	Alex L. Nicol (R)	Sparta
1951-53Frank E. Panzer (R)	Brownsville	Ora R. Rice (R)	Delavan
1955Frank E. Panzer (R)	Brownsville	Mark Catlin, Jr. (R)	Appleton
1957Frank E. Panzer (R)	Brownsville	Robert G. Marotz (R)	Shawano
1959Frank E. Panzer (R)	Brownsville	George Molinaro (D)	Kenosha
1961Frank E. Panzer (R)	Brownsville	David J. Blanchard (R)	Edgerton
1963Frank E. Panzer (R)	Brownsville	Robert D. Haase (R)	Marinette
1965Frank E. Panzer (R)	Brownsville	Robert T. Huber (D)	West Allis
1967-69Robert P. Knowles (R)	New Richmond	Harold W. Froehlich (R)	Appleton
1971Robert P. Knowles (R)	New Richmond	Robert T. Huber (D) ³	West Allis
	.Robert P. Knowles (R)	New Richmond	Norman C. Anderson (D) ³	Madison
1973Robert P. Knowles (R)	New Richmond	Norman C. Anderson (D)	Madison
1975Fred A. Risser (D)	Madison	Norman C. Anderson (D)	Madison
1977-81Fred A. Risser (D) ¹	Madison	Edward G. Jackamonis (D)	Waukesha
1983-89Fred A. Risser (D)	Madison	Thomas A. Loftus (D)	Sun Prairie
1991Fred A. Risser (D)	Madison	Walter J. Kunicki (D)	Milwaukee
1993Fred A. Risser (D) ⁴	Madison	Walter J. Kunicki (D)	Milwaukee
	.Brian D. Rude (R) ⁴	Coon Valley	Walter J. Kunicki (D)	Milwaukee
1995Brian D. Rude (R) ⁵	Coon Valley	David T. Prosser, Jr. (R)	Appleton
	.Fred A. Risser (D) ⁵	Madison	David T. Prosser, Jr. (R)	Appleton
1997Fred A. Risser (D) ⁶	Madison	Ben Brancel (R) ⁷	Endeavor
	.Brian D. Rude (R) ⁶	Coon Valley	Scott R. Jensen (R) ⁷	Waukesha
1999Fred A. Risser (D)	Madison	Scott R. Jensen (R)	Waukesha
2001Fred A. Risser (D)	Madison	Scott R. Jensen (R)	Waukesha
2003-05Alan J. Lasee (R)	De Pere	John Gard (R)	Peshigo
2007Fred A. Risser (D)	Madison	Michael D. Huebsch (R)	West Salem
2009Fred A. Risser (D)	Madison	Michael J. Sheridan (D)	Janesville
2011Michael G. Ellis (R)	Neenah	Jeff Fitzgerald (R)	Horicon

Note: Political party indicated is for session elected and is obtained from newspaper accounts for some early legislators. Key: D-Democrat; GB-Greenback; P-Progressive; R-Republican; U-Union; UD-Union Democrat; W-Whig.

¹Table lists the ranking legislator in each house, not the presiding officer. The "president pro tempore" is listed until May 1, 1979; "president of the senate" is listed after that date when the lieutenant governor's function as president was eliminated by a constitutional amendment adopted in April 1979. See separate table for a list of lieutenant governors.

²George A. Nelson (R), Polk County, was elected to serve at special session, 4/15/26 to 4/16/26, following the resignation of Herman Sachtjen after the regular session to accept circuit judge appointment.

³Anderson was elected speaker 1/18/72 to succeed Huber who resigned 12/13/71 to accept appointment as chairman of the Highway Commission.

⁴A new president was elected on 4/20/93 after a change in party control following two special elections.

⁵A new president was elected on 7/9/96 after a change in party control following a recall election.

⁶A new president was elected on 4/21/98 after a change in party control following a special election.

⁷Jensen was elected speaker 11/4/97 to succeed Brancel who resigned to become Wisconsin Secretary of Agriculture, Trade and Consumer Protection.

Sources: Senate and Assembly Journals; Wisconsin Legislative Reference Bureau records.

MAJORITY AND MINORITY LEADERS OF THE WISCONSIN SENATE AND ASSEMBLY, 1937 – 2011

Session	Senate		Assembly	
	Majority	Minority	Majority	Minority
1937Maurice P. Coakley (R)	NA	NA	NA
1939Maurice P. Coakley (R)	Philip E. Nelson (P)	NA	Paul R. Alfonsi (P)
1941Maurice P. Coakley (R)	Cornelius T. Young (D)	Mark S. Catlin, Jr. (R)	Andrew J. Biemiller (P)
				Robert E. Tehan (D)
1943Warren P. Knowles (R) ¹	NA	Mark S. Catlin, Jr. (R)	Elmer L. Genzmer (D)
	.John W. Byrnes (R) ¹			Lyall T. Beggs (P)
1945Warren P. Knowles (R)	Anthony P. Gawronski (D)	Vernon W. Thomson (R)	Lyall T. Beggs (P)
				Leland S. McParland (D)
1947Warren P. Knowles (R)	Robert E. Tehan (D)	Vernon W. Thomson (R)	Leland S. McParland (D)
1949Warren P. Knowles (R)	NA	Vernon W. Thomson (R)	Leland S. McParland (D)
1951Warren P. Knowles (R)	Gaylord Nelson (D)	Arthur O. Mockrud (R)	George Molinaro (D)
1953Warren P. Knowles (R)	Henry W. Maier (D)	Mark S. Catlin, Jr. (R)	George Molinaro (D)
1955Paul J. Rogan (R) ²	Henry W. Maier (D)	Robert G. Marotz (R)	Robert T. Huber (D)
1957Robert Travis (R)	Henry W. Maier (D)	Warren A. Grady (D)	Robert T. Huber (D)
1959Robert Travis (R)	Henry W. Maier (D)	Keith Hardie (D)	David J. Blanchard (R)
1961Robert Travis (R)	William R. Moser (D) ³	Robert D. Haase (R)	Robert T. Huber (D)
1963Robert P. Knowles (R)	Richard J. Zaborski (D)	Paul R. Alfonsi (R)	Robert T. Huber (D)
1965Robert P. Knowles (R)	Richard J. Zaborski (D)	Frank L. Nikolay (D)	Robert D. Haase (R) ⁴
				Paul J. Alfonsi (R) ⁴
1967Jerris Leonard (R)	Fred A. Risser (D)	J. Curtis McKay (R)	Robert T. Huber (D)

MAJORITY AND MINORITY LEADERS OF THE WISCONSIN SENATE AND ASSEMBLY, 1937 – 2011–Continued

Session	Senate		Assembly	
	Majority	Minority	Majority	Minority
1969Ernest C. Keppler (R)	Fred A. Risser (D)	Paul R. Alfonsi (R)	Robert T. Huber (D)
1971Ernest C. Keppler (R)	Fred A. Risser (D)	Norman C. Anderson (D) ⁵	Harold V. Froehlich (R)
1973Raymond C. Johnson (R)	Fred A. Risser (D)	Anthony S. Earl (D) ⁵	John C. Shabaz (R)
1975Wayne F. Whittow (D) ⁶	Clifford W. Krueger (R)	Terry A. Willkom (D)	John C. Shabaz (R)
	.William A. Bablitch (D) ⁶			
1977William A. Bablitch (D)	Clifford W. Krueger (R)	James W. Wahner (D)	John C. Shabaz (R)
1979William A. Bablitch (D)	Clifford W. Krueger (R)	James W. Wahner (D) ⁷	John C. Shabaz (R)
			Gary K. Johnson (D) ⁷	
1981William A. Bablitch (D) ⁹	Walter J. Chilsen (R)	Thomas A. Loftus (D)	John C. Shabaz (R) ⁸
	.Timothy F. Cullen (D) ⁹			Tommy G. Thompson (R) ⁸
1983Timothy F. Cullen (D)	James E. Harsdorf (R)	Gary K. Johnson (D)	Tommy G. Thompson (R)
1985Timothy F. Cullen (D)	Susan S. Engleleiter (R)	Dismas Becker (D)	Tommy G. Thompson (R)
1987Joseph A. Strohl (D)	Susan S. Engleleiter (R)	Thomas A. Hauke (D)	Betty Jo Nelsen (R)
1989Joseph A. Strohl (D)	Michael G. Ellis (R)	Thomas A. Hauke (D)	David T. Prosser (R)
1991David W. Helbach (D)	Michael G. Ellis (R)	David M. Travis (D)	David T. Prosser (R)
1993David W. Helbach (D) ¹⁰	Michael G. Ellis (R) ¹⁰	David M. Travis (D)	David T. Prosser (R)
	.Michael G. Ellis (R) ¹⁰	David W. Helbach (D) ^{10,11}		
		Robert Jauch (D) ¹¹		
1995Michael G. Ellis (R) ¹³	Robert Jauch (D) ¹²	Scott R. Jensen (R)	Walter J. Kunicki (D)
		Charles Chvala (D) ^{12,13}		
	.Charles Chvala (D) ¹³	Michael G. Ellis (R) ¹³		
1997Charles Chvala (D) ¹⁴	Michael G. Ellis (R) ¹⁴	Steven M. Foti (R)	Walter J. Kunicki (D) ¹⁵
	.Michael G. Ellis (R) ¹⁴	Charles Chvala (D) ¹⁴		Shirley Krug (D) ¹⁵
1999Charles Chvala (D)	Michael G. Ellis (R) ¹⁶	Steven M. Foti (R)	Shirley Krug (D)
		Mary E. Panzer (R) ¹⁶		
2001Charles Chvala (D)	Mary E. Panzer (R)	Steven M. Foti (R)	Shirley Krug (D)
	Russell S. Decker (D) ¹⁷			Spencer Black (D) ¹⁸
	Fred A. Risser (D) ¹⁷			
	Jon B. Erpenbach (D) ¹⁷			
2003Mary E. Panzer (R) ¹⁹	Jon B. Erpenbach (D)	Steven M. Foti (R)	James E. Kreuser (D)
	Scott L. Fitzgerald (R) ¹⁹			
	Dale W. Schultz (R) ²⁰	Judith Biros Robson (D) ²⁰		
2005Dale W. Schultz (R)	Judith Biros Robson (D)	Michael D. Huebsch (R)	James E. Kreuser (D)
2007Judith Biros Robson (D)	Scott L. Fitzgerald (R)	Jeff Fitzgerald (R)	James E. Kreuser (D)
	Russell S. Decker (D) ²¹			
2009Russell S. Decker (D) ²²	Scott L. Fitzgerald (R)	Thomas M. Nelson (D)	Jeff Fitzgerald (R)
	.Dave Hansen (D) ²²			
2011Scott L. Fitzgerald (R)	Mark Miller (D)	Scott Suder (R)	Peter W. Barca (D)

Note: Majority and minority leaders, who are chosen by the party caucuses in each house, were first recognized officially in the senate and assembly rules in 1963. Prior to the 1977 session, these positions were also referred to as "floor leader".

Key: (D) – Democrat; (P) – Progressive; (R) – Republican.

NA – Not available.

¹Knowles granted leave of absence to return to active duty in U.S. Navy; Byrnes chosen to succeed him on 4/30/1943.

²Resigned after sine die adjournment.

³Resigned 1/30/1962.

⁴Haase resigned 9/15/1965; Alfonsi elected 10/4/1965.

⁵Earl elected 1/18/1972 to succeed Anderson who became Assembly Speaker.

⁶Whittow resigned 4/30/1976; Bablitch elected 5/17/1976.

⁷Wahner resigned 1/28/1980; Johnson elected 1/28/1980.

⁸Shabaz resigned 12/18/1981; Thompson elected 12/21/1981.

⁹Bablitch resigned 5/26/1982; Cullen elected 5/26/1982.

¹⁰Democrats controlled senate from 1/4/1993 to 4/20/1993 when Republicans assumed control after a special election.

¹¹Helbach resigned 5/12/1993; Jauch elected 5/12/1993.

¹²Jauch resigned 10/17/1995; Chvala elected 10/24/1995.

¹³Republicans controlled senate from 1/5/1995 to 6/13/1996 when Democrats assumed control after a recall election.

¹⁴Democrats controlled the senate from 1/6/1997 to 4/21/1998 when Republicans assumed control after a special election.

¹⁵Kunicki resigned 6/3/1998; Krug elected 6/3/1998.

¹⁶Ellis resigned 1/25/2000; Panzer elected 1/25/2000.

¹⁷Decker and Risser elected co-leaders 10/22/2002. Erpenbach elected leader 12/4/2002.

¹⁸Black elected 5/1/2001.

¹⁹Panzer resigned 9/17/2004; Fitzgerald elected 9/17/2004.

²⁰Schultz elected 11/9/2004; Robson elected 11/9/2004.

²¹Decker elected 10/24/2007.

²²Hansen replaced Decker as leader, 12/15/2010.

Sources: *Wisconsin Blue Book*, various editions; newspaper accounts.

SENATE AND ASSEMBLY CHIEF CLERKS AND SERGEANTS AT ARMS, 1848 – 2011

Legislative	Senate		Assembly	
Session	Chief Clerk	Sergeant at Arms	Chief Clerk	Sergeant at Arms
1848	.Henry G. Abbey	Lyman H. Seaver	Daniel N. Johnson	John Mullanphy
1849	.William R. Smith	F. W. Shollner	Robert L. Ream	Felix McLinden
1850	.William R. Smith	James Hanrahan	Alex T. Gray	E. R. Hugunin
1851	.William Hull	E. D. Masters	Alex T. Gray	C. M. Kingsbury
1852	.John K. Williams	Patrick Cosgrove	Alex T. Gray	Elisha Starr
1853	.John K. Williams	Thomas Hood	Thomas McHugh	Richard F. Wilson
1854	.Samuel G. Bugh	J. M. Sherwood	Thomas McHugh	William H. Gleason
1855	.Samuel G. Bugh	William H. Gleason	David Atwood	William Blake
1856	.Byron Paine	Joseph Baker	James Armstrong	Egbert Mosely
1857	.William Henry Brisbane	Alanson Filer	William C. Webb	William C. Rogers
1858	.John L. V. Thomas	Nathaniel L. Stout	L. H. D. Crane	Francis Massing
1859	.Hiram Bowen	Asa Kinney	L. H. D. Crane	Emmanuel Munk
1860	.J. H. Warren	Asa Kinney	L. H. D. Crane	Joseph Gates
1861	.J. H. Warren	J. A. Hadley	L. H. D. Crane	Craig B. Peebe
1862	.J. H. Warren	B. U. Caswell	John S. Dean	A. A. Huntington
1863	.Frank M. Stewart	Luther Bashford	John S. Dean	A. M. Thompson
1864	.Frank M. Stewart	Nelson Williams	John S. Dean	A. M. Thompson
1865	.Frank M. Stewart	Nelson Williams	John S. Dean	Alonzo Wilcox
1866	.Frank M. Stewart	Nelson Williams	E. W. Young	L. M. Hammond
1867	.Leander B. Hills	Asa Kinney	E. W. Young	Daniel Webster
1868	.Leander B. Hills	W. H. Hamilton	E. W. Young	C. L. Harris
1869	.Leander B. Hills	W. H. Hamilton	E. W. Young	Rolin C. Kelly
1870	.Leander B. Hills	E. M. Rogers	E. W. Young	Ole C. Johnson
1871	.O. R. Smith	W. W. Baker	E. W. Young	Sam S. Fifield
1872	.J. H. Waggoner	W. D. Hoard	E. W. Young	Sam S. Fifield
1873	.J. H. Waggoner	Albert Emonson	E. W. Young	O. C. Bissel
1874	.J. H. Waggoner	O. U. Aiken	George W. Peck	Joseph Deuster
1875	.Fred A. Dennett	O. U. Aiken	R. M. Strong	J. W. Brackett
1876	.A. J. Turner	E. T. Gardner	R. M. Strong	Elisha Starr
1877	.A. J. Turner	C. E. Bullard	W. A. Nowell	Thomas B. Reid
1878	.A. J. Turner ¹	L. J. Brayton	Jabez R. Hunter	Anton Klaus
	Charles E. Bross ¹			
1879	.Charles E. Bross	Chalmers Ingersoll	John E. Eldred	Miletus Knight
1880	.Charles E. Bross	Chalmers Ingersoll	John E. Eldred	D. H. Pulcifer
1881	.Charles E. Bross	W. W. Baker	John E. Eldred	G. W. Church
1882	.Charles E. Bross	A. T. Glaze	E. D. Coe	D. E. Welch
1883	.Charles E. Bross	A. D. Thorp	I. T. Carr	Thomas Kennedy
1885	.Charles E. Bross	Hubert Wolcott	E. D. Coe	John M. Ewing
1887	.Charles E. Bross	T. J. George	E. D. Coe	William A. Adamson
1889	.Charles E. Bross	T. J. George	E. D. Coe	F. E. Parsons
1891	.J. P. Hume	John A. Barney	George W. Porth	Patrick Whelan
1893	.Sam J. Shafer	John B. Becker	George W. Porth	Theodore Knapstein
1895	.Walter L. Houser	Charles Pettibone	W. A. Nowell	B. F. Millard
1897	.Walter L. Houser	Charles Pettibone	W. A. Nowell	C. M. Hambricht
1899	.Walter L. Houser	Charles Pettibone	W. A. Nowell	James H. Agen
1901	.Walter L. Houser	Charles Pettibone	W. A. Nowell	A. M. Anderson
1903	.Theodore W. Goldin	Sanfield McDonald	C. O. Marsh	A. M. Anderson
1905	.L. K. Eaton	R. C. Falconer	C. O. Marsh	Nicholas Streveler
1907	.A. R. Emerson	R. C. Falconer	C. E. Shaffer	W. S. Irvine
1909	.F. E. Andrews	R. C. Falconer	C. E. Shaffer	W. S. Irvine
1911-13	.F. M. Wylie	C. A. Leicht	C. E. Shaffer	W. S. Irvine
1915	.O. G. Munson	F. E. Andrews	C. E. Shaffer	W. S. Irvine
1917	.O. G. Munson	F. E. Andrews	C. E. Shaffer	T. G. Cretney
1919	.O. G. Munson	John Turner	C. E. Shaffer	T. G. Cretney
1921	.O. G. Munson	Vincent Kielpinski	C. E. Shaffer	T. G. Cretney
1923	.F. W. Schoenfeld	C. A. Leicht	C. E. Shaffer	T. W. Bartingale
1925	.F. W. Schoenfeld	C. A. Leicht	C. E. Shaffer	C. E. Hanson
1927-29	.O. G. Munson	George W. Rickeman	C. E. Shaffer	C. F. Moulton
1931	.R. A. Cobban	Emil A. Hartman	C. E. Shaffer	George Rheingans
1933	.R. A. Cobban	Emil A. Hartman	John J. Slocum	George C. Faust
1935-37	.Lawrence R. Larsen	Emil A. Hartman	Lester R. Johnson	Gustave Rheingans
1939	.Lawrence R. Larsen	Emil A. Hartman	John J. Slocum	Robert A. Merrill
1941-43	.Lawrence R. Larsen	Emil A. Hartman	Arthur L. May	Norris J. Kellman
1945	.Lawrence R. Larsen	Harold E. Damon	Arthur L. May	Norris J. Kellman
1947-53	.Thomas M. Donahue	Harold E. Damon	Arthur L. May	Norris J. Kellman
1955-57	.Lawrence R. Larsen	Harold E. Damon	Arthur L. May	Norris J. Kellman

**SENATE AND ASSEMBLY CHIEF CLERKS
AND SERGEANTS AT ARMS, 1848 – 2011–Continued**

Legislative Session	Senate		Assembly	
	Chief Clerk	Sergeant at Arms	Chief Clerk	Sergeant at Arms
1959Lawrence R. Larsen	Harold E. Damon	Norman C. Anderson	Thomas H. Browne
1961Lawrence R. Larsen	Harold E. Damon	Robert G. Marotz	Norris J. Kellman
1963Lawrence R. Larsen	Harold E. Damon	Kenneth E. Priebe	Norris J. Kellman
1965Lawrence R. Larsen ²	Harold E. Damon	James P. Buckley	Thomas H. Browne
	William P. Nugent ²			
1967William P. Nugent	Harry O. Levander	Arnold W. F. Langner ³	Louis C. Romell
			Wilmer H. Struebing ³	
1969William P. Nugent	Kenneth Nicholson	Wilmer H. Struebing	Louis C. Romell
1971William P. Nugent	Kenneth Nicholson	Thomas P. Fox	William F. Quick
1973William P. Nugent	Kenneth Nicholson	Thomas S. Hanson	William F. Quick
1975Glenn E. Bultman	Robert M. Thompson	Everett E. Bolle	Raymond J. Tobiasz
1977Donald J. Schneider	Robert M. Thompson	Everett E. Bolle	Joseph E. Jones
1979Donald J. Schneider	Daniel B. Fields	Marcel Dandeneau	Joseph E. Jones
1981Donald J. Schneider	Daniel B. Fields	David R. Kedrowski	Lewis T. Mittness
1983Donald J. Schneider	Daniel B. Fields	Joanne M. Duren	Lewis T. Mittness
1985Donald J. Schneider	Daniel B. Fields	Joanne M. Duren	Patrick Essie
1987Donald J. Schneider	Daniel B. Fields	Thomas T. Melvin	Patrick Essie
1989-91Donald J. Schneider	Daniel B. Fields	Thomas T. Melvin	Robert G. Johnston
1993Donald J. Schneider	Daniel B. Fields ⁴	Thomas T. Melvin	Robert G. Johnston
		Jon H. Hochkammer ⁴		
1995Donald J. Schneider	Jon H. Hochkammer	Thomas T. Melvin ⁵	John A. Scocos
			Charles R. Sanders ⁵	
1997Donald J. Schneider	Jon H. Hochkammer	Charles R. Sanders	John A. Scocos ⁶
				Denise L. Solie ⁶
1999Donald J. Schneider	Jon H. Hochkammer	Charles R. Sanders	Denise L. Solie
2001Donald J. Schneider	Jon H. Hochkammer ⁷	John A. Scocos ⁷	Denise L. Solie
2003Donald J. Schneider ⁸	Edward A. Blazel	Patrick E. Fuller	Richard A. Skindrud
	Robert J. Marchant ⁸			
2005-07Robert J. Marchant	Edward A. Blazel	Patrick E. Fuller	Richard A. Skindrud
2009Robert J. Marchant	Edward A. Blazel	Patrick E. Fuller	William M. Nagy
2011Robert J. Marchant	Edward A. Blazel	Patrick E. Fuller	Anne Tonnon Byers

¹Bross elected 2/6/78; Turner resigned 2/7/78.

²Larsen died 3/2/65; Nugent elected 3/31/65.

³Langner resigned 5/2/67; Struebing elected 5/16/67.

⁴Fields served until 8/2/93. Randall Radtke served as Acting Sergeant from 8/3/93 to 11/3/93. Hochkammer was elected 1/25/94.

⁵Melvin retired 1/31/95; Sanders elected 5/24/95.

⁶Scocos resigned 9/25/97; Solie elected 1/15/98.

⁷Scocos resigned 2/25/02. Hochkammer resigned 9/2/02. No replacement was elected for either.

⁸Schneider resigned 7/4/03; Marchant elected 1/20/04.

Sources: Wisconsin Legislative Reference Bureau, *Wisconsin Blue Book*, various editions; journals and organizing resolutions of each house.

MEMBERS OF THE WISCONSIN LEGISLATURE, 1848 – 2007
See 2007-2008 Blue Book Feature Article
“Those Who Served: Wisconsin Legislators 1848 – 2007,” pp. 99-191.

WISCONSIN LEGISLATIVE SESSIONS, 1848 – 2009

Session	Opening and Adjournment Dates	Length of Session		Measures Introduced			Vetoes ¹		Laws Enacted	
		Calendar Days ²	Meeting Days ³		Bills	Jt. Res.	Res.	Bills Vetoeed		Over-riden
			(S)	(A)						
1848	6/5-8/21	78	58	59	217	0	0	0	155	
1849	1/10-4/2	83	69	65	428	0	0	1	220	
1850	1/9-2/11	34	29	29	438	0	0	1	284	
1851	1/8-3/17	69	59	59	707	0	0	9	407	
1852	1/14-4/19	97	78	78	813	0	0	2	504	
1853	1/12-4/4; 6/6-7/13	153	100	104	1,145	0	0	3	521	
1854	1/11-4/3	83	66	66	880	0	0	2	437	
1855	1/10-4/2	83	79	79	955	0	0	6	500	
1856	1/9-3/31; 9/3-10/14	125	94	103	1,242	0	0	1	688	
1857	1/14-3/9	55	46	46	895	0	0	0	517	
1858	1/13-3/31; 4/10-5/17	116	95	97	1,364	157	342	28	436	
1859	1/12-3/21	69	58	57	986	113	143	9	680	
1860	1/11-4/2	83	66	67	1,024	69	246	2	489	
1861	1/9-4/17	99	81	80	857	100	235	2	387	
1861SS ⁴	5/15-5/27	13	11	11	28	24	34	0	15	
1862	1/8-4/7; 6/3-6/17	105	86	88	1,008	125	207	27	514	
1862SS	9/10-9/26	17	15	15	43	25	37	0	17	
1863	1/14-4/2	79	65	67	895	101	157	7	383	
1864	1/13-4/4	83	68	69	835	66	141	0	509	
1865	1/11-4/10	90	73	72	1,132	82	190	2	565	
1866	1/10-4/2	83	75	74	1,107	64	208	5	733	
1867	1/9-4/11	93	71	72	1,161	97	161	2	790	
1868	1/8-3/6	59	46	45	987	73	119	2	692	
1869	1/13-3/11	58	40	43	887	52	81	12	657	
1870	1/12-3/17	65	51	51	1,043	54	89	2	666	
1871	1/11-3/25	74	58	60	1,066	55	82	4	671	
1872	1/10-3/26	77	61	60	709	79	124	2	322	
1873	1/8-3/20	72	49	55	611	62	122	4	308	
1874	1/14-3/12	58	50	49	688	91	111	2	349	
1875	1/13-3/6	53	44	42	637	39	93	2	344	
1876	1/12-3/14	63	50	50	715	57	115	2	415	
1877	1/10-3/8	58	41	41	720	59	95	4	384	
1878	1/9-3/21	72	55	55	735	79	134	2	342	
1878SS	6/4-6/7	4	4	4	6	14	10	0	5	
1879	1/8-3/5	57	43	43	610	49	105	0	256	
1880	1/14-3/17	64	50	49	669	58	93	3	323	
1881	1/12-4/14	93	63	64	780	104	100	3	334	
1882	1/11-3/31	80	57	57	728	57	90	6	330	
1883	1/10-4/4	85	57	67	705	75	100	2	360	
1885	1/14-4/13	90	65	66	963	97	108	8	471	
1887	1/12-4/15	94	69	68	1,293	114	60	10	553	
1889	1/9-4/19	101	64	64	1,355	136	82	5	529	
1891	1/14-4/25	102	68	69	1,216	137	91	8	483	
1892SS	6/28-7/1	4	4	4	4	7	16	0	1	
1892SS	10/17-10/27	11	9	9	8	6	14	0	2	
1893	1/11-4/21	101	62	62	1,124	135	86	6	312	
1895	1/9-4/20	102	70	70	1,154	139	88	0	387	
1896SS	2/18-2/28	11	8	8	3	11	15	0	1	
1897	1/13-4/21; 8/17-8/20	103	75	76	1,077	155	39	11	381	
1899	1/11-5/4	114	78	77	910	113	40	4	357	
1901	1/9-5/15	127	89	89	1,091	81	39	22	470	
1903	1/14-5/23	130	87	89	1,115	65	81	23	451	
1905	1/11-6/21	162	114	117	1,357	134	101	19	523	
1905SS	12/4-12/19	16	12	14	24	15	26	0	17	
1907	1/9-7/16	189	114	123	1,685	205	84	26	677	
1909	1/13-6/18	157	100	101	1,567	213	49	24	550	
1911	1/11-7/15	186	137	138	1,710	267	37	15	665	
1912SS	4/30-5/6	7	6	6	41	7	6	0	22	
1913	1/8-8/9	214	138	147	1,847	175	79	23	778	
1915	1/13-8/24	224	147	148	1,560	220	79	15	637	
1916SS	10/10-10/11	2	2	2	2	8	4	0	2	
1917	1/10-7/16	188	130	133	1,439	229	115	18	679	
1918SS	2/19-3/9	19	14	14	27	22	28	2	16	
1918SS	9/24-9/25	2	2	2	2	6	9	0	2	
1919	1/8-7/30	204	107	106	1,350	268	100	40	703	
1919SS	9/4-9/8	5	4	3	7	4	6	0	7	
1920SS	5/25-6/4	11	7	7	46	10	22	2	32	
1921	1/12-7/14	184	116	116	1,199	207	93	41	591	
1922SS	3/22-3/28	7	4	4	10	7	12	1	4	
1923	1/10-7/14	186	114	120	1,247	215	93	52	449	
1925	1/14-6/29	167	103	107	1,144	200	115	73	454	
1926SS	4/15-4/16	2	2	2	1	8	12	0	1	
1927	1/12-8/13	214	121	128	1,341	235	167	88	2	
1928SS	1/24-2/4	12	9	8	20	35	23	0	5	
1928SS	3/6-3/13	6	6	6	13	9	17	0	2	
1929	1/9-9/20	255	137	135	1,366	278	185	44	530	
1931	1/14-6/27	165	98	104	1,429	291	160	36	487	
1931SS	11/24/31-2/5/32	74	48	42	99	93	83	2	31	
1933	1/11-7/25	196	111	121	1,411	324	157	15	496	
1933SS	12/11/33-2/3/34	55	30	34	45	160	53	0	20	

WISCONSIN LEGISLATIVE SESSIONS, 1848 – 2009—Continued

Session	Opening and Adjournment Dates	Length of Session			Measures Introduced			Vetoes ¹		
		Calendar Days ²	Meeting Days ³		Bills	Jt. Res.		Bills Vetoed	Over- ridden	Laws Enacted
			(S)	(A)						
1935	1/9-9/27	262	153	156	1,662	346	190	27	0	556
1937	1/13-7/2	171	97	114	1,404	228	127	10	0	432
1937SS	9/15-10/16	32	23	23	28	18	23	0	0	15
1939	1/11-10/6	269	154	154	1,559	268	133	22	0	535
1941	1/8-6/6	150	90	93	1,368	160	109	17	0	333
1943	1/13-8/3; (1944: 1/12-1/22)	375	105	104	1,153	202	136	39	20	577
1945	1/10-6/20; 9/5-9/6	240	97	93	1,156	208	109	31	5	590
1946SS	7/29-7/30	2	2	2	2	6	14	0	0	2
1947	1/8-7/19; 9/9-9/11	247	114	114	1,220	195	97	10	1	615
1948SS	7/19-7/20	2	2	2	0	5	11	0	0	0
1949	1/12-7/9; 9/12-9/13	245	105	106	1,432	188	86	17	2	643
1951	1/10-6/14	156	91	90	1,559	157	73	18	0	735
1953	1/14-6/12; 10/26-11/6	297	97	98	1,593	175	70	31	3	687
1955	1/12-6/24; 10/3-10/21	283	111	114	1,503	256	74	38	0	696
1957	1/9-6/28; 9/23-9/27	262	107	108	1,512	246	71	39	1	706
1958SS	6/11-6/13	3	3	3	3	7	13	0	0	3
1959	1/14-5/27/60 (1959: 1/14-7/25, 11/3-12/23; 1960: 1/6-1/22, 5/16-5/27)	500	159	163	1,769	272	84	36	4	696
1961	1/11-6/1-9/63 (1961: 1/11-8/12, 10/30-12/22; 1962: 1/8-1/12, 6/18-7/31, 12/27-12/29; 1963: 1/9)	729	184	185	1,592	295	68	73	2	689
1963	1/9-6/3-1/13/65 (1963: 1/9-8/6, 11/4-11/21; 1964: 4/13-4/29, 11/9-11/11; 1965: 1/13)	736	150	142	1,619	241	110	72	4	580
1963SS	12/10-12/12	3	3	3	9	10	10	0	0	3
1965 ⁵	1/13-6/5-1/2/67 (1965: 1/13-7/30, 10/4-11/4; 1966: 5/2-6/10; 1967: 1/2)	720	161	157	1,818	293	86	24	1	666
1967	1/11-6/7-1/6/69 (1967: 1/11-3/9, 4/4-7/28, 10/17-11/16, 12/5-12/16; 1968: none; 1969: 1/6)	727	122	126	1,700	215	61	18	0	355
1969	1/6-6/9-1/4/71 (1969: 1/6, 1/21-11/15; 1970: 1/5-1/16; 1971: 1/4)	729	165	165	2,014	232	101	34	1	501
1969SS ⁶	9/29/69-1/17/70	111	28	18	5	5	8	0	0	1
1970SS	12/22/70	1	1	1	0	1	5	0	0	0
1971	1/4-7/1-1/1/73 (1971: 1/4, 1/19-10/28; 1972: 1/18-3/10, 7/13-7/15; 1973: 1/1)	729	179	180	2,568	291	121	32	3	336
1972SS	4/19-4/28	10	5	6	9	4	4	0	0	6
1973	1/1-1/16-2/15, 3/13-7/26, 10/2-10/26; 1974: 1/29-3/29, 11/19-11/20; 1975: 1/6)	736	150	150	2,501	277	126	13	0	341
1973SS	12/17-12/21	5	5	5	3	2	6	0	0	2
1974SS	4/29-6/13	46	17	21	12	1	4	0	0	6
1974SS ⁷	11/19-11/20	2	2	1	2	0	0	0	0	1
1975	1/6-7/5-1/3/77 (1975: 1/6, 1/1-2/20, 4/1-7/16, 9/2-9/26; 1976: 1/28-3/26, 6/15-6/17; 1977: 1/3)	729	124	125	2,325	169	88	36	6	414
1975SS	12/9-12/11	3	3	3	13	1	2	1	0	7
1976SS	5/18	1	1	1	2	2	3	0	0	1
1976SS ⁸	6/15-6/17	3	3	3	13	4	3	0	0	8
1976SS	9/8	1	1	1	4	1	1	0	0	2
1977	1/3-7/7-1/1/79 (1977: 1/3, 1/11-2/18, 3/29-7/1, 9/6-9/30; 1978: 1/24-1/26, 1/31-3/31, 6/13-6/15; 1979: 1/3)	729	84	112	2,053	182	48	21	4	442
1977SS	6/30	1	1	1	0	1	2	0	0	0
1977SS	11/7-11/11	5	5	5	6	4	2	0	0	5
1978SS ⁹	6/13-6/15	3	3	3	2	5	2	0	0	2
1978SS	12/20	1	1	1	2	4	2	0	0	2
1979	1/3-7/9-1/5/81 1979: 1/3, 1/9, 1/23-3/2, 4/17-6/29, 10/2-11/2; 1980: 1/29-4/2, 5/28-5/30; 1981: 1/5)	734	85	99	1,920	203	40	19	3	350
1979SS	9/5	1	1	1	10	3	2	0	0	5
1980SS ¹⁰	1/22-1/25	4	2	4	8	3	2	0	0	0

WISCONSIN LEGISLATIVE SESSIONS, 1848 – 2009–Continued

Session	Opening and Adjournment Dates	Length of Session			Measures Introduced			Vetoes ¹		Laws Enacted
		Calendar Days ²	Meeting Days ³		Bills	Jt. Res.		Bills Vetoed	Over-ridden	
			(S)	(A)						
1980SS	6/3-7/3	31	13	12	20	14	2	0	0	7
1981	1/5/81-1/3/83 (1981: 1/5, 1/13, 1/27-2/20, 4/7-7/17, 9/30-10/30, 12/15-12/17; 1982: 1/20-6/14; 1983: 1/3)	729	121	130	1,987	176	70	10	2	381
1981SS ⁹	11/4-11/17	14	8	7	6	3	2	0	0	3
1982SS ⁹	4/6-4/30, 5/5-5/20	45	18	21	4	2	2	1	0	1
1982SS ¹⁰	5/26-5/28	3	3	3	13	7	2	0	0	9
1983	1/3/83-1/7/85 (1983: 1/3, 1/25-1/28, 2/8-2/18, 4/12-6/30, 10/4-10/28; 1984: 1/31-4/6, 5/22-5/24; 1985: 1/7)	736	72	80	1,902	173	50	3	0	521
1983SS	1/4-1/6	3	3	1	2	2	1	0	0	2
1983SS	4/12-4/14	3	3	3	1	1	0	0	0	1
1983SS	7/11-7/14	4	4	4	5	3	1	0	0	4
1983SS	10/18-10/28	11	8	7	12	1	0	0	0	11
1984SS	2/2-4/4	63	18	13	2	1	0	0	0	0
1984SS	5/22-5/24	3	3	2	12	5	1	0	0	11
1985	1/7/85-1/7/87 (1985: 1/7, 1/15, 1/29-2/8, 3/19-3/21, 4/23-6/29, 9/24-10/18; 1986: 1/28-3/26, 5/20-5/22; 1987: 1/5)	331	68	66	1,624	171	41	7	0	293
1985SS	3/19-3/21	3	2	2	6	1	0	0	0	3
1985SS	9/24-10/19	26	11	7	21	1	0	0	0	17
1985SS	10/31	1	1	1	1	3	0	0	0	1
1985SS	11/20	1	1	1	24	2	0	0	0	12
1986SS	1/27-5/30	124	34	27	1	4	0	0	0	1
1986SS	3/24-3/26	3	3	3	1	1	0	0	0	1
1986SS	5/20-5/29	10	6	4	44	3	0	0	0	12
1986SS	7/15	1	1	1	3	1	0	0	0	2
1987 ¹⁰	1/5/87-1/3/89 (1987: 1/5, 1/13, 1/27-2/6, 3/17-3/19, 4/21-7/2, 10/6-10/30; 1988: 1/26-3/25, 5/17-5/19; 1989: 1/3)	730	60	73	1,628	199	21	35	0	412
1987SS	9/15-9/16	2	2	2	2	1	0	0	0	2
1987SS	11/18/87-6/7/88	203	9	11	19	3	0	3	0	5
1988SS	6/30	1	1	1	5	1	3	0	0	3
1989	1/3/89-1/7/91 (1989: 1/3, 1/4-1/9, 1/10, 1/11-1/23, 1/24-2/3, 2/6-3/13, 3/14-3/16, 3/17-4/24, 4/25-4/27, 4/28-5/15, 5/16-6/30, 10/3-11/10, 11/13-12/31; 1990: 1/1-1/22, 1/23-3/23, 3/26-5/14, 5/15-5/17, 5/18-12/31; 1991: 1/1-1/4, 1/7)	735	68	70	1,557	244	45	35	0	361
1989SS	10/10/89-3/22/90	164	52	49	52	6	0	0	0	7
1990SS	5/15/90	1	1	1	7	1	0	0	0	0
1991	1/7/91-1/4/93 (1991: 1/7, 1/15, 1/29-3/14, 4/16-5/16, 6/4-7/3, 10/1-11/8; 1992: 1/28-3/27, 5/19-5/21; 1993: 1/4)	729	102	100	1,676	244	32	33	0	318
1991SS	1/29-7/4	157	49	52	16	1	0	0	0	2
1991SS	10/15/91-5/21/92	220	50	47	9	2	0	0	0	1
1992SS ⁸	4/14-6/4	52	20	17	7	1	2	0	0	2
1992SS	6/1	1	1	1	0	2	0	0	0	0
1992SS	8/25-9/15	22	7	7	1	1	2	0	0	1
1993	1/4/93-1/3/95 (1993: 1/4, 1/26-3/11, 4/20-7/16, 10/5-10/28; 1994: 1/25-3/25, 5/17; 1995: 1/3)	730	91	86	2,147	207	47	8	0	491
1994SS	5/18-5/19	2	2	2	6	1	0	0	0	3
1994SS ¹¹	6/7-6/23	17	8	8	3	4	0	0	0	3
1995	1/3/95-1/6/97 (1995: 1/3-1/5, 1/17-2/2, 2/14-3/9, 4/4-4/6, 5/16-6/29, 9/19-10/12, 11/7-11/16; 1996: 1/9-2/1, 3/5-3/28, 5/7-5/14, 7/9; 1997: 1/6)	735	78	90	1,780	163	38	4	0	467
1995SS	1/4	1	1	1	1	1	0	0	0	1
1995SS	9/5-10/12	36	12	13	1	1	0	0	0	1
1997	1/6/97-1/4/99 (1997: 1/6, 1/14, 1/28-1/30, 2/12, 2/25-2/26, 3/4-3/20, 5/13-5/29, 6/10-9/30, 11/4-11/6, 11/18-11/20;	729	87	92	1,508	183	30	3	0	333

WISCONSIN LEGISLATIVE SESSIONS, 1848 – 2009—Continued

Session	Opening and Adjournment Dates	Length of Session			Measures Introduced			Vetoes ¹		
		Calendar Days ²	Meeting Days ³		Bills	Jt. Res.	Res.	Bills Vetoe d	Over- ridden	Laws Enacted
			(S)	(A)						
1998	1/13-1/22, 2/3-2/12, 3/10-3/26, 4/21-5/13, 1999: 1/4)									
1998SS ¹²	4/21-5/21	31	13	12	13	2	2	0	0	5
1999 ¹³	1/4/99-1/3/01 (1999: 1/4, 1/14, 1/26-1/28, 2/16-2/18, 3/2-3/4, 3/16-3/25, 5/11-10/6, 10/26-11/11; 2000: 1/25-2/10, 3/7-3/30, 5/2-5/4, 5/23-5/24; 2001: 1/3)	731	97	101	1,498	168	52	5	0	196
1999SS ⁷	10/27-11/11	16	7	8	3	1	0	0	0	1
2000SS	5/4-5/9	8	3	3	2	2	1	0	0	1
2001	1/3/01-1/6/03 (2001: 1/3, 1/30-2/1, 2/13-2/15, 3/6-3/22, 5/1-5/10, 6/5-7/26, 10/2-10/4, 10/16-11/8; 2002: 1/22-2/7, 2/26-3/14, 4/30-5/2, 5/14-5/15; 2003: 1/6)	734	62	63	1,436	174	75	0	0	106
2001SS ⁷	5/1-5/3	3	1	2	1	0	0	0	0	1
2002SS ⁷	1/22-7/8	168	59	52	1	2	7	0	0	1
2002SS ⁷	5/13-5/15	3	3	2	2	0	0	0	0	1
2003 ¹⁴	1/6/03-1/3/05 (2003: 1/6-1/7, 1/28-1/30, 2/18-2/20, 3/3-3/20, 4/29-5/8, 5/28-6/25, 9/23-10/2, 10/28-11/13; 2004: 1/20-2/5, 2/24-3/11, 4/27, 5/11-5/19; 2005: 1/3)	729	104	94	1,567	164	78	54	0	326
2003SS	1/30-2/20	22	7	7	1	0	0	0	0	1
2005 ¹⁵	1/3/05-1/3/07 (2005: 1/3, 1/11-1/27, 2/8, 2/15-2/24, 3/8-3/16, 4/5-4/12, 5/3-5/12, 5/31-6/30, 7/5, 7/20, 9/20-9/28, 10/25-11/9, 12/6-12/15; 2006: 1/17-2/2, 2/21-3/9, 4/25-5/17, 5/30-5/31, 7/12; 2007: 1/3)	731	69	72	1,967	196	76	47	0	489
2005SS	1/12-1/20	9	4	1	2	0	0	0	0	1
2006SS	2/14-3/7	22	7	6	2	0	0	0	0	1
2007	1/3/07-1/5/09 (2007: 1/3, 1/9, 1/30-2/1, 2/13, 2/20-3/1, 3/13-3/15, 4/17-4/26, 5/8-5/16, 5/29-11/8, 12/11; 2008: 1/15-1/31, 2/19-3/13, 5/6-5/8, 5/27-5/28; 2009: 1/5)	733	91	89	1,574	230	50	1	0	239
2007SS	1/11-2/1	22	7	6	2	1	0	0	0	1
2007SS	10/15-10/23	9	5	3	2	0	0	0	0	0
2007SS	12/11/07, 1/15-5/14/08	156	38	39	1	1	0	0	0	0
2008SS	3/12-4/15	65	22	22	1	4	2	0	0	1
2008SS	4/17-5/15	29	11	11	1	4	2	0	0	1
2009 ¹⁶	1/5/09-1/3/11 (2009: 1/5, 1/13, 1/27-2/26, 3/24-3/26, 4/21-4/30, 5/12-5/21, 6/9-6/30, 9/15-9/24, 10/20-11/5; 2010: 1/19-1/28, 2/16-3/4, 4/13-4/22, 5/4-5/6, 5/25-5/26, 12/15-12/16; 2011: 1/3)	729	59	60	1,720	221	44	6	0	406
2009SS	6/24-6/27	4	4	3	1	0	0	0	0	0
2009SS	12/16-3/4/10	79	23	24	2	0	0	0	0	0

Note: For 1836-1847 territorial sessions, see *1873 Blue Book*, p. 205.

¹Partial vetoes not included. See Executive Vetoes table. ²Number of calendar days from session opening date to final adjournment. ³Number of days senate or assembly met, including "skeleton sessions" (those days on which the senate or assembly leadership calls the house in session *in absentia* to fulfill a procedural requirement). ⁴SS denotes special session. Regular and special sessions may run concurrently with meetings held on the same day. Each is counted as a separate meeting day. ⁵Although 1965 Legislature adjourned to 1/11/67, terms automatically expired on 1/2/67. ⁶Senate adjourned the special session 11/15/69; assembly, 1/17/70. ⁷Special session met concurrently with regular session. ⁸1979 Legislature met concurrently in extraordinary and special session, 1/22/80 – 1/25/80. ⁹Legislature met concurrently in special session and extended floor period. ¹⁰Extraordinary sessions held in September 1987, and April, May and June 1988. May 1988 extraordinary session ran concurrently with May 1988 veto review period and also with June 1988 extraordinary session. ¹¹Extraordinary session held, 6/15/94 – 6/23/94. ¹²Extraordinary session held in April 1998. ¹³Extraordinary session held in April and May 2000. ¹⁴Extraordinary sessions held in February, July, and August 2003; December 2003-February 2004; March 2004; May 2004; and July 2004. ¹⁵Extraordinary sessions were held in July 2005 and April 2006. ¹⁶Extraordinary sessions held in February, May, June, and December 2009 and in December 2010.

Sources: *Bulletin of the Proceedings of the Wisconsin Legislature*, various editions; and senate and assembly journals.

**WISCONSIN MEMBERS, U.S. HOUSE OF REPRESENTATIVES
1848 – 2011**

Name	Party	Residence	District	Term
Adams, Henry C.	Rep.	Madison	2	1903-1906
Amlic, Thomas R.	Rep., Prog.	Elkhorn	1	1931-1933; 1935-1939
Aspin, Les	Dem.	East Troy	1	1971-1993
Atwood, David.	Rep.	Madison	2	1870-1871
Babbitt, Clinton	Dem.	Beloit	1	1891-1893
Babcock, Joseph W.	Rep.	Necedah	3	1893-1907
Baldus, Alvin	Dem.	Menomonic	3	1893-1981
Baldwin, Tammy.	Rep.	Madison	2	1999-
Barber, J. Allen.	Rep.	Lancaster	3	1871-1875
Barca, Peter W.	Dem.	Kenosha	1	1993-1995
Barnes, Lyman E.	Dem.	Appleton	8	1893-1895
Barney, Samuel S.	Rep.	West Bend	8	1895-1903
Barrett, Thomas M.	Dem.	Milwaukee	5	1993-2003
Barwig, Charles	Dem.	Mayville	5	1889-1895
Beck, Joseph D.	Rep.	Viroqua	7	1921-1929
Berger, Victor L.	Soc.	Milwaukee	5	1911-1913; 1919; 1923-1929
Biemiller, Andrew J.	Dem.	Milwaukee	5	1945-1947; 1949-1951
Billinghurst, Charles	Rep.	Juneau	3	1855-1859
Blanchard, George W.	Rep.	Edgerton	1	1933-1935
Boileau, Gerald J.	Rep., Prog.	Wausau	8,7	1931-1939
Bolles, Stephen	Rep.	Jamesville	1	1975-1941
Bouck, Gabriel	Dem.	Oshkosh	6	1877-1881
Bragg, Edward S.	Dem.	Fond du Lac	5,2	1877-1883; 1885-1887
Brickner, George H.	Dem.	Sheboygan Falls	5	1889-1895
Brophy, John C.	Rep.	Milwaukee	4	1947-1949
Brown, James S.	Dem.	Milwaukee	1	1863-1865
Brown, Webster E.	Rep.	Rhineland	9,10	1901-1907
Browne, Edward E.	Rep.	Waupaca	8	1933-1931
Burchard, Samuel D.	Dem.	Beaver Dam	5	1875-1877
Burke, Michael E.	Rep.	Beaver Dam	6,2	1911-1917
Bushnell, Allen R.	Dem.	Madison	3	1891-1893
Byrnes, John W.	Rep.	Green Bay	8	1945-1973
Cannon, Raymond J.	Dem.	Milwaukee	4	1933-1939
Cary, William J.	Rep.	Milwaukee	4	1907-1919
Caswell, Lucien B.	Rep.	Fort Atkinson	2,1	1875-1883; 1885-1891
Cate, George W.	Reform	Stevens Point	8	1875-1877
Clark, Charles B.	Rep.	Neenah	6	1887-1891
Classon, David G.	Rep.	Oconto	9	1917-1923
Cobb, Amasa.	Rep.	Mineral Point	3	1863-1871
Coburn, Frank P.	Dem.	West Salem	7	1891-1893
Cole, Oramus	Whig	Potosi	2	1849-1851
Cook, Samuel A.	Rep.	Neenah	6	1895-1897
Cooper, Henry Allen.	Rep.	Racine	1	1893-1919; 1921-1931
Cornell, Robert J.	Dem.	De Pere	8	1975-1979
Dahle, Herman B.	Rep.	Mount Horeb	8	1899-1903
Darling, Mason C.	Dem.	Fond du Lac	2	1848-1849
Davidson, James H.	Rep.	Oshkosh	6,8	1897-1913; 1917-1918
Davis, Glenn R.	Rep.	Waukesha	2,9	1947-1957; 1965-1975
Deuster, Peter V.	Dem.	Milwaukee	4	1879-1885
Dilweg, La Vern R.	Dem.	Green Bay	8	1943-1945
Doty, James D.	Dem.	Neenah	3	1849-1853
Duffy, Sean P.	Rep.	Ashland	3	2011-
Durke, Charles	Free Soil	Kenosha	1	1809-1853
Eastman, Ben C.	Dem.	Platteville	2	1851-1855
Eldredge, Charles A.	Dem.	Fond du Lac	4,5	1863-1875
Esch, John Jacob	Rep.	La Crosse	7	1899-1921
Flynn, Gerald T.	Dem.	Racine	1	1959-1961
Frear, James A.	Rep.	Hudson	10,9	1913-1935
Froehlich, Harold V.	Rep.	Appleton	8	1973-1975
Gehrmann, Bernard J.	Prog.	Mellen	10	1935-1943
Green, Mark A.	Rep.	Green Bay	8	1999-2007
Griffin, Michael	Rep.	Eau Claire	7	1894-1899
Griswold, Harry W.	Rep.	West Salem	3	1939-1941
Guenther, Richard W.	Rep.	Oshkosh	6,2	1881-1889
Gunderson, Steven.	Rep.	Osseo	3	1981-1997
Hanchett, Luther	Rep.	Plover	2	1861-1862
Haugen, Nils P.	Rep.	Black River Falls	8,10	1887-1895
Hawkes, Charles, Jr.	Rep.	Horicon	2	1939-1941
Hazelton, George C.	Rep.	Boscobel	2	1877-1883
Hazelton, Gerry W.	Rep.	Columbus	2	1871-1875
Henney, Charles W.	Dem.	Portage	2	1933-1935
Henry, Robert K.	Rep.	Jefferson	2	1945-1947
Hopkins, Benjamin F.	Rep.	Madison	2	1867-1870
Hudd, Thomas R.	Dem.	Green Bay	5	1886-1889
Hughes, James	Dem.	De Pere	5	1933-1935
Hull, Merim	Prog.	Black River Falls	7,9	1973-1983; 1935-1953
Humphrey, Herman L.	Rep.	Hudson	7	1877-1883
Jenkins, John J.	Rep.	Chippewa Falls	10,11	1895-1909
Johns, Joshua L.	Rep.	Appleton	8	1939-1943
Johnson, Jay	Dem.	New Franken	8	1997-1999
Johnson, Lester R.	Dem.	Black River Falls	9	1953-1965
Jones, Burr W.	Dem.	Madison	3	1883-1885
Kading, Charles A.	Rep.	Watertown	3	1927-1933
Kagen, Steve	Dem.	Appleton	6	2007-2011
Kasten, Robert W., Jr.	Rep.	Waukesha	9	1975-1979
Kastenmeier, Robert W.	Dem.	Sun Prairie	2	1959-1991
Keefe, Frank B.	Rep.	Oshkosh	6	1939-1951
Kersten, Charles J.	Rep.	Whitefish Bay	5	1947-1949; 1951-1955
Kimball, Alanson M.	Rep.	Waushara	6	1875-1877
Kind, Ron	Dem.	La Crosse	3	1997-
Kleccka, Gerald D.	Dem.	Milwaukee	4	1984-2005
Kleccka, John C.	Rep.	Milwaukee	4	1919-1923

**WISCONSIN MEMBERS, U.S. HOUSE OF REPRESENTATIVES
1848 – 2011–Continued**

Name	Party	Residence	District	Term
Klug, Scott L.	Rep.	Madison	2	1991-1999
Konop, Thomas F.	Dem.	Kewaunee	9	1911-1917
Kopp, Arthur W.	Rep.	Platteville	3	1909-1913
Kustermann, Gustav	Rep.	Green Bay	9	1907-1911
La Follette, Robert M., Sr.	Rep.	Madison	3	1885-1891
Laird, Melvin R.	Rep.	Marshfield	7	1953-1969
Lampert, Florian	Rep.	Oshkosh	6	1918-1930
Larrabee, Charles H.	Dem.	Horicon	3	1859-1861
Lenroot, Irvine L.	Rep.	Superior	11	1909-1918
Lynch, Thomas	Dem.	Antigo	9	1891-1895
Lynde, William Pitt	Dem.	Milwaukee	1,4	1848-1849; 1875-1879
Macy, John B.	Dem.	Fond du Lac	3	1853-1855
Magoon, Henry S.	Rep.	Darlington	3	1875-1877
McCord, Myron H.	Rep.	Merrill	9	1889-1891
McDill, Alexander S.	Rep.	Plover	8	1873-1875
McIndoe, Walter D.	Rep.	Wausau	6	1863-1867
McMurray, Howard J.	Dem.	Milwaukee	5	1943-1945
Miller, Lucas M.	Dem.	Oshkosh	6	1891-1893
Minor, Edward S.	Rep.	Sturgeon Bay	8,9	1895-1907
Mitchell, Alexander	Dem.	Milwaukee	1,4	1871-1875
Mitchell, John L.	Dem.	Milwaukee	4	1891-1893
Monahan, James G.	Rep.	Darlington	7	1919-1921
Moody, James P.	Dem.	Milwaukee	5	1983-1993
Moore, Gwen	Dem.	Milwaukee	4	2005-
Morse, Elmer A.	Rep.	Antigo	10	1907-1913
Murphy, James W.	Dem.	Platteville	3	1907-1909
Murray, Reid F.	Rep.	Ogdensburg	7	1939-1953
Nelson, Adolphus P.	Rep.	Grantsburg	11	1918-1923
Nelson, John Mandt	Rep.	Madison	2,3	1906-1919; 1921-1933
Neumann, Mark W.	Rep.	Janesville	1	1993-1999
Obey, David R.	Dem.	Wausau	7	1969-2011
O'Konski, Alvin E.	Rep.	Mercer	10	1943-1973
O'Malley, Thomas D. P.	Dem.	Milwaukee	5	1933-1939
Otjen, Theobald	Rep.	Milwaukee	4	1895-1907
Paine, Halbert E.	Rep.	Milwaukee	1	1865-1871
Peavey, Hubert H.	Rep.	Washburn	11,10	1923-1935
Petri, Thomas E.	Rep.	Fond du Lac	6	1979-
Potter, John F.	Rep.	East Troy	1	1887-1863
Pound, Thaddeus C.	Rep.	Chippewa Falls	8	1877-1883
Price, Hugh H.	Rep.	Black River Falls	8	1887
Price, William T.	Rep.	Black River Falls	8	1883-1886
Race, John A.	Dem.	Fond du Lac	6	1965-1967
Randall, Clifford E.	Rep.	Kenosha	1	1919-1921
Rankin, Joseph	Dem.	Manitowoc	5	1883-1886
Reilly, Michael K.	Dem.	Fond du Lac	6	1913-1917; 1930-1939
Reuss, Henry S.	Dem.	Milwaukee	5	1955-1983
Ribble, Reid J.	Rep.	Appleton	8	2011-
Roth, Toby	Rep.	Appleton	8	1979-1997
Rusk, Jeremiah M.	Rep.	Viroqua	6,7	1871-1877
Ryan, Paul	Rep.	Janesville	1	1999-
Sauerhering, Edward	Rep.	Mayville	2	1895-1899
Sauthoff, Harry	Prog.	Madison	1	1935-1939
Sawyer, Philetus	Rep.	Oshkosh	5,6	1865-1875
Schadeberg, Henry C.	Rep.	Darlington	3	1941-1945; 1967-1971
Schafer, John C.	Rep.	Milwaukee	4	1923-1933; 1939-1941
Schneider, George J.	Rep. Prog.	Appleton	9,8	1923-1933; 1935-1939
Sensenbrenner, F. James, Jr.	Rep.	Menomonee Falls	9,5	1979-
Shaw, George B.	Rep.	Eau Claire	7	1893-1894
Sloan, A. Scott	Rep.	Beaver Dam	3	1861-1863
Sloan, Ithamar C.	Rep.	Janesville	2	1863-1867
Smith, Henry	Union Labor	Milwaukee	4	1887-1889
Smith, Lawrence H.	Rep.	Racine	4	1941-1959
Somers, Peter J.	Dem.	Milwaukee	4	1893-1895
Stafford, William H.	Rep.	Milwaukee	5	1903-1911; 1913-1919; 1921-1923; 1929-1933
Stalbaum, Lynn E.	Dem.	Racine	1	1965-1967
Steiger, William A.	Rep.	Oshkosh	6	1967-1978
Stephenson, Isaac	Rep.	Marinette	9	1883-1889
Stevenson, William H.	Rep.	La Crosse	9	1941-1949
Stewart, Alexander	Rep.	Wausau	9	1895-1901
Sumner, Daniel H.	Dem.	Waukesha	2	1883-1885
Tewes, Donald E.	Rep.	Waukesha	2	1957-1959
Thill, Lewis D.	Rep.	Milwaukee	5	1939-1943
Thomas, Ormsby B.	Rep.	Prairie du Chien	7	1885-1891
Thomson, Vernon W.	Rep.	Richland Center	3	1961-1975
Van Pelt, William K.	Rep.	Fond du Lac	6	1951-1963
Van Schaick, Isaac W.	Rep.	Milwaukee	4	1885-1885; 1889-1891
Vornt, Edward	Rep.	Sheboygan	2	1917-1927
Washburn, Cadwallader C.	Rep.	Mineral Point, La Crosse	2	1855-1861; 6
Wasielewski, Thaddeus F.	Dem.	Milwaukee	4	1867-1871
Weisse, Charles H.	Dem.	Milwaukee	4	1941-1947
Weisse, Charles H., Jr.	Dem.	Sheboygan Falls	6	1903-1911
Wells, Daniel, Jr.	Dem.	Milwaukee	1	1853-1857
Wells, Owen A.	Dem.	Fond du Lac	6	1893-1895
Wheeler, Ezra	Dem.	Berlin	5	1863-1865
Williams, Charles G.	Rep.	Janesville	1	1873-1883
Winans, John	Dem.	Janesville	1	1883-1885
Withrow, Gardner R.	Rep. Prog.	La Crosse	7,3	1931-1939; 1949-1961
Woodward, Gilbert M.	Dem.	La Crosse	7	1883-1885
Zablocki, Clement J.	Dem.	Milwaukee	4	1949-1983

Sources: Wisconsin Legislative Reference Bureau, *Wisconsin Blue Book*, various editions; Congressional Quarterly, *Guide to U.S. Elections*, 1985; and official election records.

WISCONSIN MEMBERS, U.S. HOUSE OF REPRESENTATIVES By District, 1943 – 2011

District	Name	Service	Party	Residence	Alphabetical Listing
1st	Lawrence H. Smith	1941-59	Rep.	Racine	Aspin 1st
	Gerald T. Flynn	1959-61	Dem.	Racine	Baldus 3rd
	Henry C. Schadeberg	1961-65; 1967-71	Rep.	Burlington	Baldwin 2nd
	Lynn E. Stalbaum	1965-67	Dem.	Racine	Barca 1st
	Les Aspin ¹	1971-93	Dem.	East Troy	Barrett 5th
	Peter W. Barca ¹	1993-95	Dem.	Kenosha	Biemiller 5th
	Mark W. Neumann	1995-99	Rep.	Janesville	Brophy 4th
	Paul Ryan	1999-	Rep.	Janesville	Byrnes 8th
2nd	Harry Sauthoff	1941-45	Prog.	Madison	Cornell 8th
	Robert K. Henry	1945-47	Rep.	Jefferson	Davis 2nd, 9th
	Glenn R. Davis	1947-57	Rep.	Waukesha	Dilweg 8th
	Donald E. Tewes	1957-59	Rep.	Waukesha	Duffy 7th
	Robert W. Kastenmeier	1959-91	Dem.	Sun Prairie	Flynn 1st
	Scott L. Klug	1991-99	Rep.	Madison	Froehlich 8th
	Tammy Baldwin	1999-	Dem.	Madison	Green 8th
					Gunderson 3rd
3rd	William H. Stevenson	1941-49	Rep.	La Crosse	Henry 2nd
	Gardner R. Withrow	1949-61	Rep.	La Crosse	Hull 9th
	Vernon W. Thomson	1961-75	Rep.	Richland Center	Johnson, J. 8th
	Alvin Baldus	1975-81	Dem.	Menomonie	Johnson, L. 9th
	Steven Gunderson	1981-97	Rep.	Osseo	Kagen 8th
	Ron Kind	1997-	Dem.	La Crosse	Kasten 9th
					Kastenmeier 2nd
					Keefe 6th
4th	Thaddeus F. Wasielewski	1941-47	Dem.	Milwaukee	Kersten 5th
	John C. Brophy	1947-49	Rep.	Milwaukee	Kind 3rd
	Clement J. Zablocki ²	1949-83	Dem.	Milwaukee	Kleczka 4th
	Gerald D. Kleczka ²	1984-2005	Dem.	Milwaukee	Klug 2nd
	Gwen Moore	2005-	Dem.	Milwaukee	Laird 7th
					McMurray 5th
5th ³	Howard J. McMurray	1943-45	Dem.	Milwaukee	Moody 5th
	Andrew J. Biemiller	1945-47; 1949-51	Dem.	Milwaukee	Moore 4th
	Charles J. Kersten	1947-49; 1951-55	Rep.	Whitefish Bay	Murray 7th
	Henry S. Reuss	1955-83	Dem.	Milwaukee	Neumann 1st
	James P. Moody	1983-93	Dem.	Milwaukee	Obey 7th
	Thomas M. Barrett	1993-2003	Dem.	Milwaukee	O'Konski 10th
	F. James Sensenbrenner, Jr.	2003-	Rep.	Menomonee Falls	Petri 6th
					Race 6th
6th	Frank B. Keefe	1939-51	Rep.	Oshkosh	Reuss 5th
	William K. Van Pelt	1951-65	Rep.	Fond du Lac	Ribble 8th
	John A. Race	1965-67	Dem.	Fond du Lac	Roth 8th
	William A. Steiger ⁴	1967-78	Rep.	Oshkosh	Ryan 1st
	Thomas E. Petri ⁴	1979-	Rep.	Fond du Lac	Sauthoff 2nd
					Schadeberg 1st
7th	Reid F. Murray	1939-53	Rep.	Ogdensburg	Sensenbrenner 9th, 5th
	Melvin R. Laird ⁵	1953-69	Rep.	Marshfield	Smith 1st
	David R. Obey ⁵	1969-2011	Dem.	Wausau	Stalbaum 1st
	Sean P. Duffy	2011-	Rep.	Ashland	Steiger 6th
					Stevenson 3rd
8th	La Vern R. Dilweg	1943-45	Dem.	Green Bay	Tewes 2nd
	John R. Byrnes	1945-73	Rep.	Green Bay	Thomson 3rd
	Harold V. Froehlich	1973-75	Rep.	Appleton	Van Pelt 6th
	Robert J. Cornell	1975-79	Dem.	De Pere	Wasielewski 4th
	Toby Roth	1979-97	Rep.	Appleton	Withrow 3rd
	Jay Johnson	1997-99	Dem.	New Franken	Zablocki 4th
	Mark A. Green	1999-2007	Rep.	Green Bay	
	Steve Kagen	2007-2011	Dem.	Appleton	
Reid J. Ribble	2011-	Rep.	Appleton		
9th ^{3,6}	Merlin Hull	1935-53	Prog.	Black River Falls	
	Lester R. Johnson	1953-65	Dem.	Black River Falls	
	Glenn R. Davis	1965-75	Rep.	Waukesha	
	Robert W. Kasten	1975-79	Rep.	Thiensville	
	F. James Sensenbrenner, Jr.	1979-2003	Rep.	Menomonee Falls	
10th ⁷	Alvin E. O'Konski	1943-73	Rep.	Rhineland	

¹Aspin resigned 1/20/1993, to become U.S. Secretary of Defense. Barca was elected in a special election, 5/4/1993.

²Zablocki died 12/3/1983. Kleczka was elected in a special election, 4/3/1984.

³In the congressional reapportionment following the 2000 Census, Wisconsin's delegation was reduced from 9 to 8 members.

The previous 4th, 5th, and 9th were reconfigured into the new 4th and 5th.

⁴Steiger died 12/4/1978, following his November 1978 election. Petri was elected in a special election, 4/3/1979.

⁵Laird resigned 1/21/1969, to become U.S. Secretary of Defense. Obey was elected in a special election, 4/1/1969.

⁶In the congressional redistricting based on the results of the 1960 Census of Population, the previous 9th District in western

Wisconsin ceased to exist and a new 9th District was created in the Waukesha-Milwaukee metropolitan area.

⁷In the congressional reapportionment based on the results of the 1970 Census of Population, Wisconsin's delegation was reduced from 10 members to 9 members.

Sources: 1944 *Wisconsin Blue Book* and Wisconsin Legislative Reference Bureau data.

U.S. SENATORS FROM WISCONSIN, 1848 – 2011

Class 1		Class 3	
Name	Service	Name	Service
Henry Dodge (D)	1848-1857	Isaac P. Walker (D)	1848-1855
James R. Doolittle (R)	1857-1869	Charles Durkee (UR)	1855-1861
Matthew H. Carpenter (R)	1869-1875	Timothy O. Howe (UR)	1861-1879
Angus Cameron (R) ¹	1875-1881	Matthew H. Carpenter (R)	1879-1881
Philetus Sawyer (R)	1881-1893	Angus Cameron (R) ¹	1881-1885
John Lendrum Mitchell (D)	1893-1899	John C. Spooner (R)	1885-1891
Joseph Very Quarles (R)	1899-1905	William F. Vilas (D)	1891-1897
Robert M. La Follette, Sr. (R) ²	1906-1925	John C. Spooner (R)	1897-1907
Robert M. La Follette, Jr. (R) ³	1925-1935	Isaac Stephenson (R) ⁵	1907-1915
Robert M. La Follette, Jr. (P)	1935-1947	Paul O. Hustung (D)	1915-1917
Joseph R. McCarthy (R)	1947-1957	Irvine L. Lenroot (R) ⁶	1918-1927
William Proxmire (D) ⁴	1957-1989	John J. Blaine (R)	1927-1933
Herbert H. Kohl (D)	1989-	F. Ryan Duffy (D)	1933-1939
		Alexander Wiley (R)	1939-1963
		Gaylord A. Nelson (D)	1963-1981
		Robert W. Kasten, Jr. (R)	1981-1993
		Russell D. Feingold (D)	1993-2011
		Ron Johnson (R)	2011-

Note: Each state has two U.S. Senators, and each serves a 6-year term. They were elected by their respective state legislatures until passage of the 17th Amendment to the U.S. Constitution on April 8, 1913, which provided for popular election. Article I, Section 3, Clause 2, of the U.S. Constitution divides senators into three classes so that one-third of the senate is elected every two years. Wisconsin's seats were assigned to Class 1 and Class 3 at statehood.

Key: Democrat (D); Progressive (P); Republican (R); Union Republican (UR)

¹Not a candidate for reelection to Class 1 seat, but elected 3/10/1881 to fill vacancy caused by death of Class 3 Senator Carpenter on 2/24/1881.

²Elected 1/25/1905 but continued to serve as governor until 1/1/1906.

³Elected 9/29/1925 to fill vacancy caused by death of Robert La Follette, Sr., on 6/18/1925.

⁴Elected 8/27/1957 to fill vacancy caused by death of McCarthy on 5/2/1957.

⁵Elected 5/17/1907 to fill vacancy caused by resignation of Spooner on 4/30/1907.

⁶Elected 5/2/1918 to fill vacancy caused by death of Hustung on 10/21/1917.

Source: Wisconsin Legislative Reference Bureau records.