



Children's  
Health  
Alliance  
of Wisconsin



# What we will share

- History of Child Death Review (CDR) and cause for concern
- Death review process and team membership
- Value and use of data collection
- Actions the Study Council & Legislature can take



Keeping  
Kids Alive  
IN WISCONSIN

★ Children's Health  
Alliance of Wisconsin



# Purpose of death review

*“Nothing compares to the death of a child, in the sadness, the sense of loss, the unfulfilled promise. It reverses the natural order, and challenges our belief in a universal good.”*

- William H. Perloff, MD

# What is Child Death Review?

- County or regional multidisciplinary team
- Professional process
- Opportunity to improve the health and safety of children



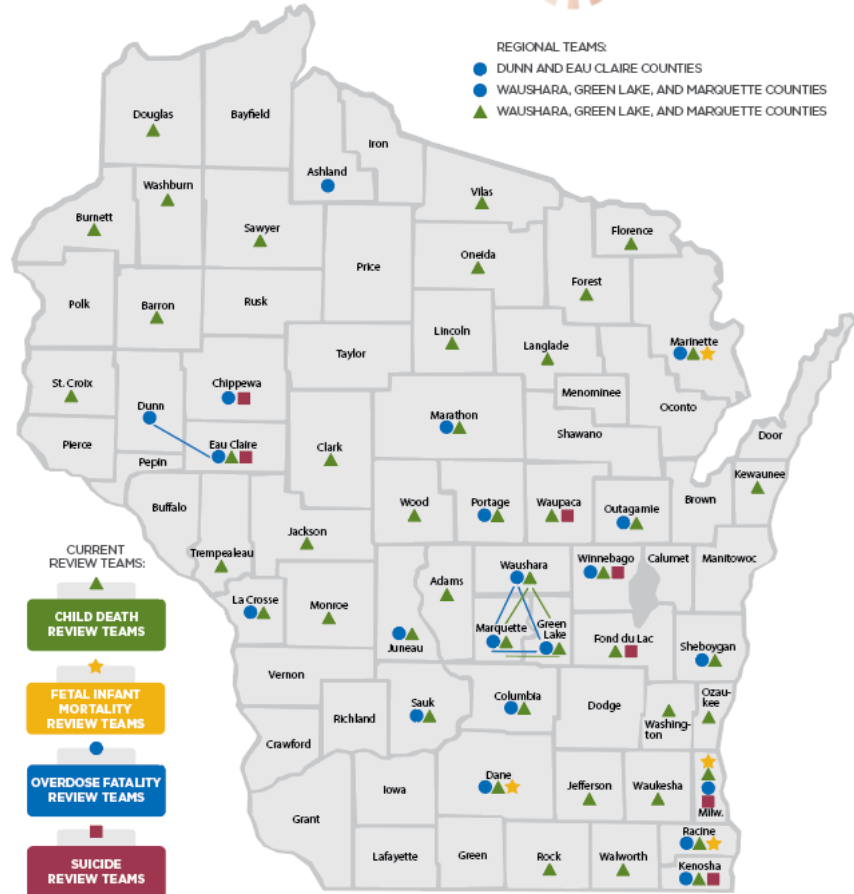


# How a review is conducted

- County or multi-county team
- Focus on unexpected deaths
- Multidisciplinary team members
- Closed and confidential meetings

# FATALITY REVIEW TEAMS BY COUNTY

Last modified - 7/12/2022



Fatality review efforts are supported through Wisconsin Department of Health Services, Wisconsin Department of Justice, and Wisconsin Partnership Program at the Medical College of Wisconsin.



# Child Death Review Council

- Review statewide data
- Advise the state legislature and agencies on policy and practices
- Educate public and recommend prevention actions
- Foster development of local Child Death Review teams
- Provide training resources
- Review SUID deaths for counties that do not have Child Death Review teams





# Data collection

- Who enters data
- What data are collected
- Challenges



# Use of data

- Conduct annual reviews of aggregate data
- Discuss trends and/or community needs
- Identify partners needed to develop, execute and lead the activity
- Evaluate outcomes
- Disseminate findings

# Prevention




# Challenges

- Capacity of team members and data collection
- Uniformity in reviews and access to records
- Local county resources



# Proposed legislative action





*"A measure of a society's worth is how well it cares for its most vulnerable members. How then can we not treat the loss of even one child as an event to be prevented?"*

- William H. Perloff, MD

# Questions and thank you

Karen Nash [knash@chw.org](mailto:knash@chw.org)  
Karen Ordinans [kordinans@gmail.org](mailto:kordinans@gmail.org)



Follow the Alliance on Facebook and Twitter @CHAWisconsin