

Chapter PSC 84

SAFETY CLAMPS FOR RAILROAD SWITCHES

PSC 84.01 Safety clamps ordered
PSC 84.02 Exceptions

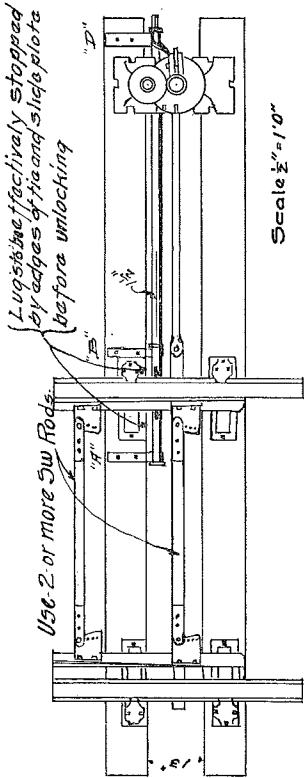
PSC 84.01 Safety clamps ordered. All railroads operated as common carriers in this state shall equip all main line switches (except only trailing switches in double track automatic block territory and within the limits of interlocking plants) with a safety clamp as illustrated in a blue print of a typical device attached to and made a part of this order or its equivalent, and keep the same padlocked in a locked position when not necessary to open the same for switching purposes.

Note: A copy of the blue print appears on the following page.

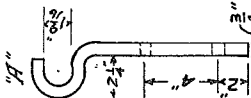
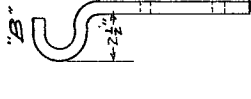
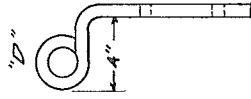
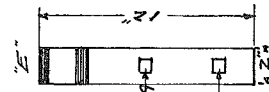
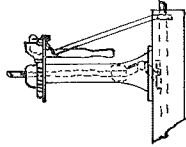
PSC 84.02 Exceptions. If any such railroad desires to use a locking device other than called for in this order, it may make a written request for permission so to do accompanied by detailed plans and if it appears to this commission that the device will retain its locking feature regardless of defects or breaks in switch rods and connecting rod and their appurtenances or derangement of switch stand by a facing point movement, such permission will be granted.

Locking to remain a effective
 regardless of movement in this
 quadrant or if the stand be
 knocked down by a facing
 train. Movement.

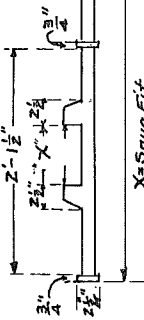
Use this
 to lock or unlock
 or to lock or
 unlock or to lock or



Scale 1/2" = 1'0"



Scale 1" = 1'0"



Cam Rod.

Use long end if
 Stand on side opposite
 to turn over.

Typical Safety Clamp.
 for
Main Line Switches.
 A method of complying with
 sec 192.28 of Wis. Statutes as
 satisfactory in W.R.C. Order of
 March 28, 1927. R 3312.

Engineering Dept.
Railroad Commission
of
Wisconsin 3-23-27.