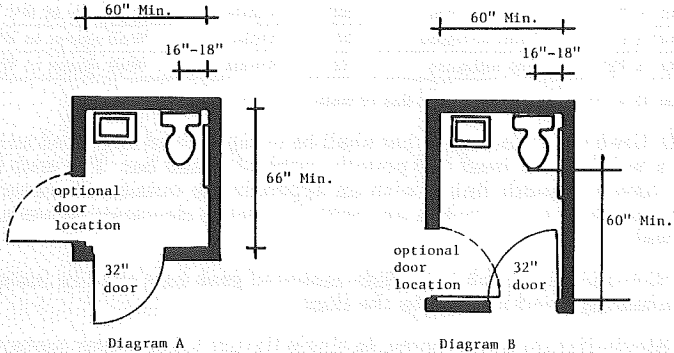


(b) *Single-fixture toilet rooms.* Single-fixture toilet rooms containing one water closet and one lavatory shall be designed to provide the minimum space requirements as shown in diagram A, diagram B, or as approved by the department.



(c) *Water closet compartments.* Accessible water closet compartments shall be designed in accordance with the minimum design standards as established in Table 52.04-A, or as approved by the department. Sufficient clearance must be maintained to permit the door to the toilet room compartment to open at least 95°.

Note: The water closet compartment specifications contained in Table 52.04-A do not apply to toilet rooms containing one water closet and one lavatory; or to bathrooms containing a water closet, a lavatory and a bathing facility. See the appendix for examples of accessible toilet room and bathroom arrangements.

TABLE 52.04-A

Compartment Size Width/Length	Door Location	Door Size	Water Closet	
			Location	Grab Bar Location
36" x 72"	Front entrance	32"	Centered	Each side of WC
36" x 78"	Side entrance	36"	Centered	Each side of WC
42" x 78"	Side entrance	32"	Centered	Each side of WC
48" x 57"	Front entrance	32"	Offset ¹	Wall closest to WC
48" x 72"	Side entrance	32"	Offset ¹	Wall closest to WC

¹ Offset 15 to 18 inches from center line of water closet to wall.

(d) *Grab bars.* Each grab bar shall be designed and anchored to support a weight of at least 250 pounds, applied at the bar. The grab bars shall have a smooth finish, with an approximate outside diameter between one inch to 1½ inches, and with 1½ inches clearance between rail and wall.

1. Side-mounted grab bars. Side-mounted grab bars shall be installed 33 inches high and parallel to the floor.

2. Single-fixture toilet rooms. In single fixture toilet rooms containing one water closet and one lavatory, one grab bar shall be located on the wall adjacent to the water closet.

3. Bathing facilities (bathtubs). Horizontal grab bars for bathtubs shall be located along the side wall and one end wall and shall be mounted 4 to 6 inches above the rim of the tub. A vertical 36-inch long grab bar shall be required on the side wall, located not more than 30 inches from the end of the tub. The bottom of the bar shall be 9 inches above the rim of the bathtub. See Appendix for diagrams.

4. * Bathing facilities (shower stalls). In shower stalls, horizontal grab bars shall be mounted 36 inches above the floor of the shower stall and be located on the back wall and the wall opposite the seat.

5. Seat-mounted grab bars are not permitted.

(e) *Water closets.* The seat height of the water closet shall be 16 inches to 18 inches above the floor.

(f) *Lavatory.* At least one lavatory, mounted at a height which allows 29 inches clear space at the bottom of the apron and a maximum rim height of 34 inches, shall be provided.

Note: It is recommended that water supply controls be single lever controls and that exposed hot water pipes be insulated.

(g) *Mirror and towel dispensers.* At least one mirror and towel dispenser or hand dryer, when provided, shall be mounted not more than 40 inches above the floor.

Note: The department will accept toilet rooms, individual toilet compartments and grab bars as illustrated in the Appendix.

(h) * *Accessible bathing facilities.* 1. The bathtub shall be equipped with a hand shower with a flexible hose at least 6 feet in length. A seat of

* See Appendix A for further explanatory material.

Register, December, 1981, No. 312
Building and heating, ventilating
and air conditioning code

nonabsorbent material shall be provided and shall be mounted 17 to 20 inches above the floor of the bathtub. The seat may be folding, retractable or fixed, unless an alternate method, such as a lift, is provided. Grab bars shall be mounted on 2 sides of the bathtub and shall comply with the requirements of par. (d) 4. In detention or correctional facilities, 2 fixed shower heads may be provided in lieu of a hand shower with a flexible hose.

Note: Refer to ch. H 62 — Design, Construction, Installation, Supervision and Inspection of Plumbing, Wis. Adm. Code, for requirements pertaining to the plumbing system, including the use of vacuum breakers.

2. The shower shall be equipped with lever type control handles. A seat of nonabsorbent material shall be provided and located 17 to 20 inches from the floor of the shower. The seat may be folding, retractable or fixed. Grab bars shall be mounted on 2 sides of the shower and shall comply with the requirements of par. (d) 4. If a shower wheelchair is provided for use in the shower, the grab bars and seat are not required. The threshold to the shower shall be no more than ½-inch and the edges shall be beveled to provide a smooth, unbroken surface to accommodate a wheelchair.

(9) MISCELLANEOUS DETAILS. (a) *Doors*. 1. Door sizes. All entrance doors and passageway doors used to provide accessibility shall be at least 32 inches in width.

2. Door thresholds. Thresholds at exterior doors shall not extend more than ¾-inch above the finished floor and exterior platform. Weather-stripped thresholds shall not exceed one inch above the finished floor and exterior platform, including the weather-stripping. All exterior thresholds shall be not less than 4 inches in width. Interior thresholds shall extend not more than ½-inch above the finished floor or carpeting. All thresholds shall be beveled to provide smooth, unbroken surfaces.

Note: Lever handles or door handles are recommended over conventional door knobs. Kickplates, 16 inches high, are recommended on the accessible side of doors. Automatic power-operated doors are recommended at entrances. Time-delay door closures are recommended at all accessible doors. The manual pull or push of a door is recommended not to exceed 8 pounds.

3. Doors in series. Doors in series, other than those which are electronically controlled, shall be arranged to provide a minimum distance of 6 feet 6 inches between the doors when closed. See Appendix for diagrams.

(b) *Platforms*. At least 18 inches of clear platform space shall be provided on the door knob side of all exterior doors. The platform shall have a side slope not greater than 2.5% (¼ inch per foot) and shall be at least 4 feet in length when the door swings inward or 5 feet in length when the door swings outward.

(c) * *Identification signs*. 1. International symbol for barrier-free environments. The international symbol for barrier-free environments shall identify all accessible entrances, toilet facilities, drinking fountains, telephones and parking spaces.

2. Location. The international symbol for barrier-free environments shall be placed at all entrances indicating the location of the nearest accessible entrance(s) and accessible toilet facilities. The symbol at the

* See Appendix A for further explanatory material.

exterior of the building shall be legible from adjacent streets, driveways or public walks.

(d) * *Wheelchair functions.* All 90°, 180°, 360° and S-turns shall be designed to provide ease of access, usability and uninterrupted mobility.

Note #1: The standard wheelchair dimensions are: length including footrest and feet, 42 inches; width, including hands and knuckles, 31 inches.

Note #2: The minimum space required to turn 90°, 180°, 360° and S-turns is illustrated in the Appendix.

(e) *Grates.* All openings in gratings that will be in the path of access shall not exceed 3/8-inch in width, and shall be installed perpendicular to the direction of travel. Spacers perpendicular to the grate and flush with the top of the grate shall be provided at not more than 18-inch intervals.

(f) *Water fountains.* Water fountains shall be accessible and installed at or adapted to a usable height.

Note: Conventional floor-mounted water coolers can be serviceable to patrons with functional limitations if a small fountain is mounted on the side of the cooler 30 inches above the floor. Fully recessed water fountains are not recommended and should not be recessed in an alcove unless the alcove is wider than a wheelchair. See Appendix for accessible designs.

(g) *Public telephones.* Where coin telephone(s) are provided for public use, a minimum of one telephone shall be accessible.

Note: It is recommended that the height of the telephone coin slot be not more than 54 inches above the floor, with the dial no more than 48 inches from the floor. An adjustable volume control should be provided in areas where such service is appropriate.

History: Cr. Register, December, 1974, No. 228, eff. 1-1-75; r. and recr. (3) (b), (4), (5) and (9) (a) and (b), am. (6), (7) (a), (7) (e), (8) (c) and (d), r. (9) (d) 3., Register, December, 1975, No. 240, eff. 1-1-76; am. table, (4) (c) 2 and (6) (e), Register, December, 1976, No. 252, eff. 1-1-77; cr. (2) (b) and (c), (3) (a) 3, am. (3) (b) (intro.), (4) (b) and (c) 1, (5), (7) (a), (c) and (e), (8) (b) and (9) (a) 1 and 2, r. and recr. (8) (b), Register, December, 1977, No. 264, eff. 1-1-78; am. (4) (c) 2., (5) (b), (6) (a) to (c), (7) (a) and (8) (c), Register, December, 1978, No. 276, eff. 1-1-79; am. (4) table, (5) (b), (9) (a) 1., (9) (c) 1. and 2, r. and recr. (3) and (8), cr. (9) (a) 3., Register, January, 1980, No. 289, eff. 2-1-80; cr. (8) (h), Register, December, 1981, No. 312, eff. 1-1-82.

Ind 52.041 Health care facilities — new construction. All new health care facilities shall be provided with access to a primary floor, interior circulation and toilet facilities in accordance with s. Ind 52.04 and the following requirements:

(1) **ACCESSIBLE PATIENT TOILET FACILITIES.** Accessible patient toilet facilities shall be provided in accordance with this section.

(a) *Individual toilet facilities.* Where individual toilet facilities are provided in patient sleeping rooms or contiguous to patient sleeping rooms, at least 20% of these toilet facilities shall be usable by the disabled and shall comply with s. Ind 52.04 (8). The accessible toilet facilities shall be integrated throughout the patient sleeping room area.

(b) *Centrally located toilet facilities.* Central toilet facilities serving the patient sleeping rooms shall be usable by the disabled and shall comply with s. Ind 52.04 (8).

*See Appendix A for further explanatory material.

Register, December, 1981, No. 312
Building and heating, ventilating
and air conditioning code