

NOTICE OF PROPOSED GUIDANCE DOCUMENT

Motorcycle Proper Operation DSP84

Pursuant to Wis. Stat. s. 227.112, the Wisconsin Department of Transportation is hereby seeking comment on Motorcycle Gear Proper Operation DSP84, Wis. Stat. ss. 346, a proposed guidance document.

PUBLIC COMMENTS AND DEADLINE FOR SUBMISSION

Comments may be submitted to the Wisconsin Department of Transportation for 21 days by:

1. Department's website:

<https://appengine.egov.com/apps/wi/dot/guidance-docs?guidDocId=DSP84>

2. Mailing written comments to:

Division of State Patrol
Wisconsin Department of Transportation
9th Floor South
4822 Madison Yards Way
Madison, WI 53705-9100

WEBSITE LOCATION OF FINAL GUIDANCE DOCUMENT

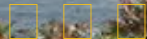
The final version of this guidance document will be posted at wisconsin.gov to allow for ongoing comment.

AGENCY CONTACT

DOTDSPGuidanceDocs@DOT.WI.GOV



State of Wisconsin Department of Transportation



- DMV ONLINE
- DMV INFO
- DOING BUSINESS
- TRAVEL
- SAFETY
- PROJECTS AND
- ABOUT WISDOT
- SERVICES
- STUDIES

Proper operation of motorcycles

- Safety Program
- Gear and equipment
- How to operate
- Advanced rider courses
- Risks and traps
- Scooter/Moped
- Rustic Roads
- Resources

Carrying passengers

- A single passenger is permitted on your motorcycle if you have a [Class M license](#) and your motorcycle is equipped with a seat and foot pegs for two.



Side by side operation

- Two motorcycles may operate in a single traffic lane if both riders consent.
- A staggered riding formation is strongly recommended.

Lane splitting

- Operate your motorcycle within a single lane of traffic. White lining or lane splitting is illegal.

Road hazards

- Learn to "read" the road looking far ahead to give yourself time to position yourself in traffic and plan the safest course of action.
- Take railroad crossings at a 90-degree angle if possible. Slow down before crossing the tracks and stand slightly on the foot pegs.
- Maneuver around potholes if it can be done safely. If not, slow down, rise slightly on the pegs and take the hole straight on.

Safe turns

- Slow down before entering a turn and look through the turn.
- Lean your body and the motorcycle into the turn.
- Accelerate through and out of the turn.

Parking

- Motorcycles may park at an angle in parallel parking areas.
- Up to three motorcycles may park in a metered stall unless signs indicate otherwise. If the meter expires, all cycles in the parking stall are in violation.

Contact Information

Contact Us

Support

Translate website

Traducir el sitio de web

翻譯網站

Website übersetzen

ترجمة الموقع

Txhais website

웹 사이트 번역

Перевести сайт

Forms/Notices

Acceptable use policy

Forms

Legal notices

Privacy policy

Software information