

NOTICE OF PROPOSED GUIDANCE DOCUMENT

Who is an Aggressive Driver? DSP112

Pursuant to Wis. Stat. s. 227.112, the Wisconsin Department of Transportation is hereby seeking comment on Who is an Aggressive Driver? DSP112, Wis. Stat. s. 346, a proposed guidance document.

PUBLIC COMMENTS AND DEADLINE FOR SUBMISSION

Comments may be submitted to the Wisconsin Department of Transportation for 21 days by:

1. Department's website:

<https://appengine.egov.com/apps/wi/dot/guidance-docs?guidDocId=DSP112>

2. Mailing written comments to:

Division of State Patrol
Wisconsin Department of Transportation
9th Floor South
4822 Madison Yards Way
Madison, WI 53705-9100

WEBSITE LOCATION OF FINAL GUIDANCE DOCUMENT

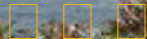
The final version of this guidance document will be posted at wisconsin.dot.gov to allow for ongoing comment.

AGENCY CONTACT

DOTDSPGuidanceDocs@DOT.WI.GOV



State of Wisconsin Department of Transportation



- DMV ONLINE
- DMV INFO
- DOING BUSINESS
- TRAVEL
- SAFETY
- PROJECTS AND
- ABOUT WISDOT
- SERVICES
- STUDIES

Who is an aggressive driver?

- Safety education
- Aggressive driving
- Who is an aggressive driver?
- Driving tips
- Speeding
- Red light running
- Failure to yield
- Tailgating
- Weaving
- How to respond

They fly past you and then cut you off with inches to spare. Maybe they make an offensive gesture when they feel you haven't been cooperative enough in their rush to get where they're going.

We all know exactly what an aggressive driver looks like. Or do we? Do any of these examples sound familiar?

- You faithfully merged to the right when you saw the sign announcing a lane closing ahead. And now, after waiting 10 minutes in line, someone comes driving down the empty left lane and tries to merge in front of you. You step on the gas and close the gap between you and the next car. They won't be cutting in

front of you today!

- You're ten minutes late for work and driving just a bit over the speed limit when the light ahead of you turns yellow. You're not close enough to make it but you feel you can't afford to wait, so you step on the gas and rocket through the intersection just as the light turns red.
- You're driving 5-10 mph over the speed limit on a four-lane highway. As you change lanes to pass a slow-moving semi, you find a car sitting in the passing lane going about the same speed as the truck. You get right on their tail, flash your lights and give them a toot on the horn.

So who is an aggressive driver? It just might be you.

Contact Information

Contact Us

Support

Translate website

Traducir el sitio de web

翻譯網站

Website übersetzen

ترجمة الموقع

Txhais website

웹 사이트 번역

Перевести сайт

Forms/Notices

Acceptable use policy

Forms

Legal notices

Privacy policy

Software information