

## **NOTICE OF PROPOSED GUIDANCE DOCUMENT**

Move Over poster

Pursuant to Wis. Stat. s. 227.112, the Wisconsin Department of Transportation is hereby seeking comment on Move Over poster (Wis. Stat. ch. 346), a proposed guidance document.

### **PUBLIC COMMENTS AND DEADLINE FOR SUBMISSION**

Comments may be submitted to the Wisconsin Department of Transportation for 21 days by:

1. Department's website: <https://appengine.egov.com/apps/wi/dot/guidance-docs?guidDocId=OPA11>

2. Mailing written comments to:

Office of Public Affairs  
Wisconsin Department of Transportation  
4822 Madison Yards Way  
PO Box 7910  
Madison, WI 53707-7910

### **WEBSITE LOCATION OF FINAL GUIDANCE DOCUMENT**

The final version of this guidance document will be posted at [wisconsindot.gov](http://wisconsindot.gov) to allow for ongoing comment.

### **AGENCY CONTACT**

DOTOPAGuidanceDocs@DOT.WI.GOV

# Move Over or Slow Down

It's the law in Wisconsin



If you see a stopped emergency or maintenance vehicle with its emergency lights flashing, move over or slow down.



## Move Over or Slow Down for Emergency Flashing Lights

One of the most dangerous places for emergency responders and maintenance personnel is along the side of the road. Each year hundreds of these hard working men and women are injured or killed by passing motorists while working along the nation's highways. In 2001, Wisconsin passed a law designed to protect law enforcement officers, emergency responders, tow operators and highway maintenance personnel who are conducting business on Wisconsin's roadways.

It is called the Move Over Law, and the concept is simple. If you see a vehicle on the side of the road with its emergency lights flashing, you are required to move out of the lane closest to the vehicle if possible. If a safe lane change is not possible, or you are traveling on a two lane roadway, you are required to slow your vehicle, maintaining a safe speed for traffic conditions, and drive at a reduced speed until completely past the vehicle.

"Our troopers, maintenance workers and others who work on busy highways take every possible precaution to avoid getting hit by vehicles," says Wisconsin Department of Transportation Secretary Frank J. Busalacchi. "But we need help from every driver on the highway. When motorists obey the Move Over Law and create a safety zone, they reduce the dangers to themselves and those who work along our highways."

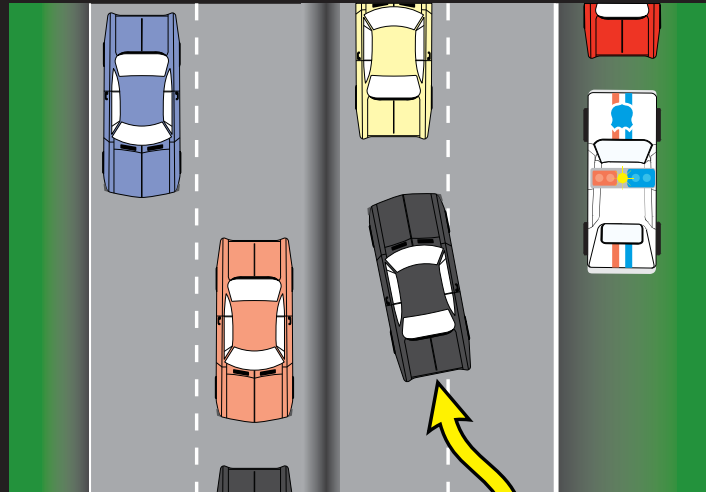
Not moving over can be painful. If you get a ticket, you will be assessed three demerit points on your license and a \$249 fine. In addition, your driver's license will be suspended if you are involved in a crash, and you may serve up to seven years in prison if you hurt or kill someone.

*For more information, contact your local law enforcement agency or the Wisconsin State Patrol.*

When drivers pass stopped emergency/maintenance vehicles, everyone's safety is at risk

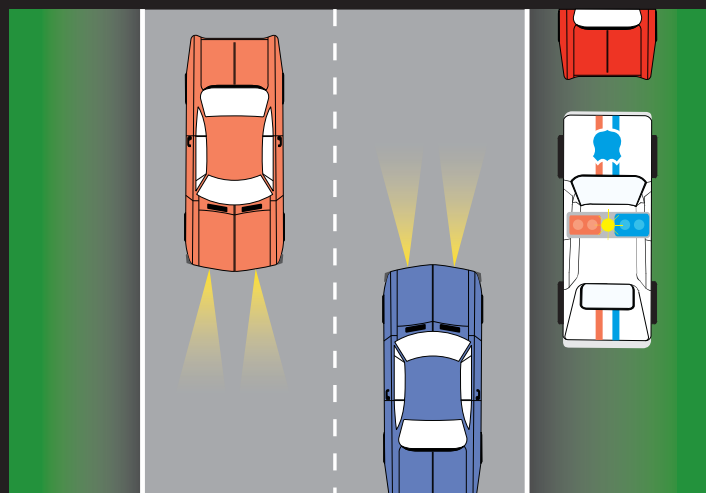
## MOVE OVER OR SLOW DOWN

### On a 4-lane roadway ...



1. **Move over** a lane from the stopped vehicle(s) until you're safely past.
2. If you can't change lanes, **slow down** and maintain a **safe speed** for traffic conditions.

### On a 2-lane roadway ...

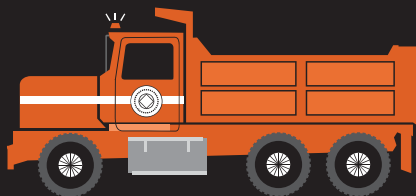
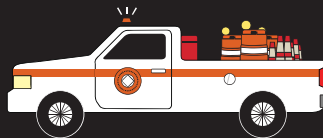
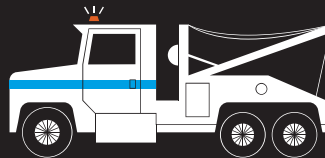
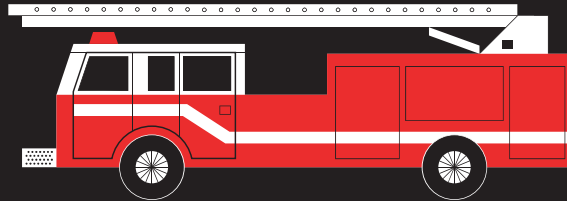
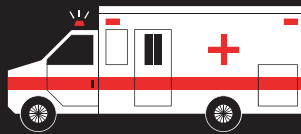
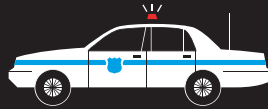


1. **Slow down** and maintain a **safe speed** for traffic conditions until you're completely past the stopped vehicle(s).

# Move Over or Slow Down

For Stopped Emergency / Maintenance Vehicles

Remember, the law applies to any emergency response or maintenance vehicle with its emergency lights flashing.

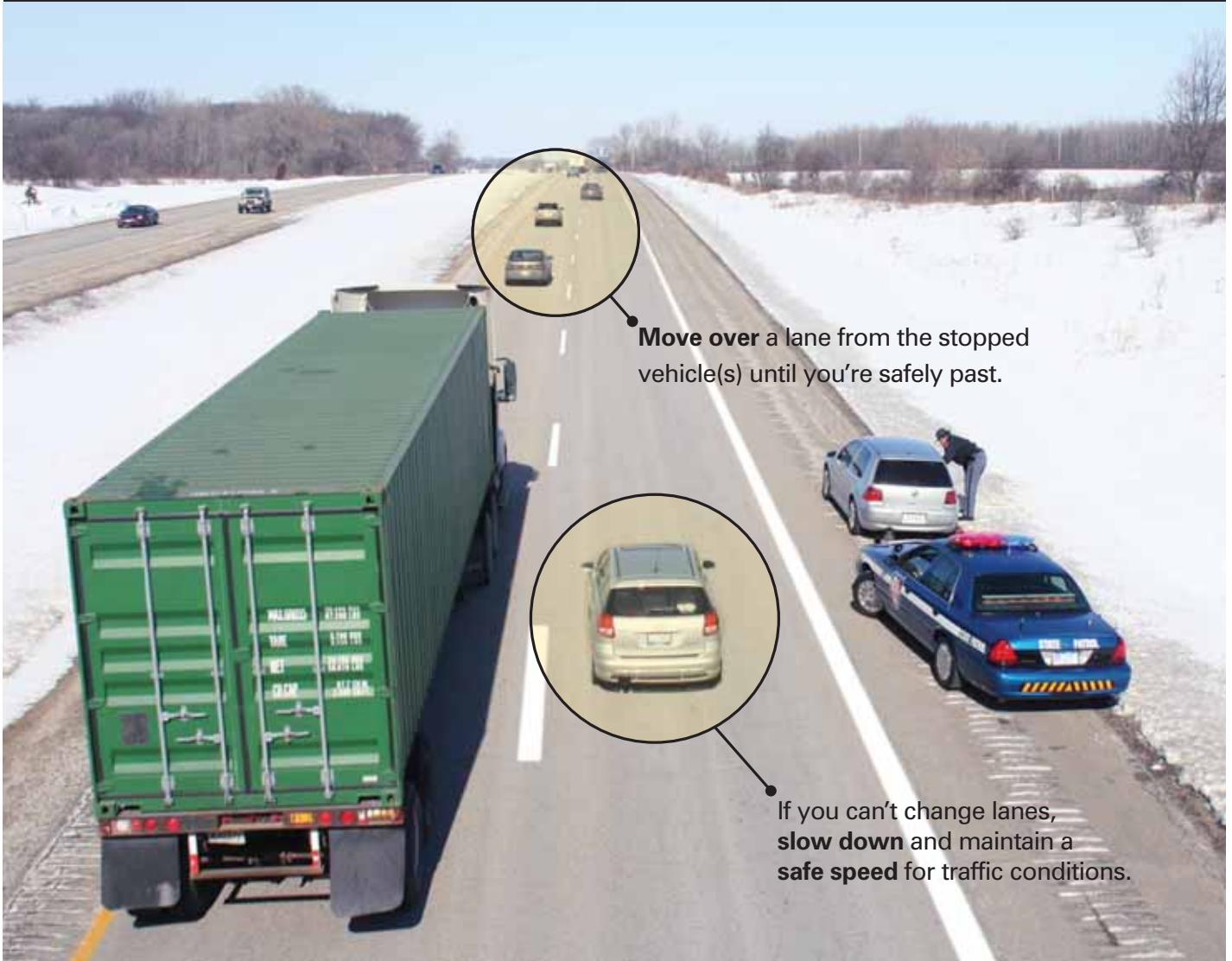


*If you would like to obtain additional copies of this brochure please contact the Wisconsin Department of Transportation's Statewide Traffic Operations Center at: (414) 227-2166*



# Move Over or Slow Down

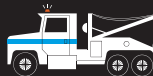
It's the law in Wisconsin



**Move over** a lane from the stopped vehicle(s) until you're safely past.

If you can't change lanes, **slow down** and maintain a **safe speed** for traffic conditions.

**Remember, the law applies to any emergency response or maintenance vehicle with its emergency lights flashing.**



Brought to you by the Wisconsin Department of Transportation

To obtain copies of this poster contact the WisDOT Statewide Traffic Operations Center at (414) 227-2166.